

South Australia

Fisheries (General) Regulations 2000

under the *Fisheries Act 1982*

Contents

Part 1—Preliminary

- 1 Citation
- 3 Revocation
- 4 Interpretation

Part 2—Regulation of fishing

- 5 Fishing activities of a prescribed class (section 41 of the Act)
- 6 Protected fish (section 42 of the Act)
- 7 Sale, purchase or possession of fish (section 44 of the Act)
- 8 Registration of devices for recreational use
- 9 Registration of devices for commercial use
- 10 Inspection of certificate of registration of devices registered for recreational use
- 11 Requirements relating to buoys
- 12 Requirements relating to tags
- 13 Carriage of certain devices in specified areas
- 14 Carriage of certain devices while using scuba etc
- 15 Carriage of devices near lock and weirs of Murray River
- 16 Distinguishing marks on boats (section 34 of the Act)
- 17 Aquatic or benthic flora or fauna (section 48G(9) of the Act)
- 18 Mutilation of certain fish
- 19 Provisions relating to abalone fishing
- 20 Keeping of fish in corfs
- 21 Keeping of rock lobster
- 22 Duty of rock lobster fishery licence holder to mark buoys
- 23 Duty to clip tail fan of rock lobster
- 24 Berleying
- 24A Commercial bait nets not to be left unattended
- 25 Requirement to remove anchors etc from nets removed from Lakes and Coorong Fishery
- 26 Marking of receptacles in which fish are transported, consigned for sale etc

Part 3—Miscellaneous

- 27 Fees
- 28 Notice of seizure of device
- 29 Research and Development Fund—prescribed fishing industry body
- 30 Notice of address for service of documents
- 31 Evidentiary provision
- 32 Expiation of alleged offences

Schedule 1—Classes of fishing activities prescribed for purposes of section 41 of Act

Schedule 2—Areas in which use of fish nets is prohibited

Part 1—Areas in which use of any fish net is prohibited

Part 2—Areas in which use of gill net, purse seine net or other hauling net is prohibited

Schedule 3—Areas and carrying of explosive devices when diving

Schedule 4—Rock lobster—removal of middle tail fan

Schedule 5—Fees

Schedule 6—Undersize fish

- 1 Abalone taken by licensed person
- 2 Abalone taken by unlicensed person
- 3 Cockle
- 4 Crab
- 5 Garfish
- 6 Mulloway
- 7 Rock lobster
- 8 Scallop
- 9 Shark
- 9A Whiting, King George
- 10 Other species and classes of fish

Schedule 7—Species of fish prescribed for the purposes of section 48G of the Act

Schedule 8—Classes of fish and quantities prescribed for purposes of section 44(4) of Act

Schedule 9—Expiation of offences

Legislative history

Part 1—Preliminary

1—Citation

These regulations may be cited as the *Fisheries (General) Regulations 2000*.

3—Revocation

The *Fisheries (General) Regulations 1984* (see *Gazette* 28.6.1984 p1947), as varied, are revoked.

4—Interpretation

- (1) In these regulations, unless the contrary intention appears—

Act means the *Fisheries Act 1982*;

bait net means a fish net that—

- (a) is not more than 150 metres in length; and
- (b) has a mesh size of not less than 30 millimetres and not more than 150 millimetres;

blue crab means blue crab (*Portunus pelagicus*);

blue groper means blue groper (*Achoerodus gouldii*);

calamary means calamary (*Sepioteuthis australis*);

callop (golden perch) means callop (golden perch (*Macquaria ambigua*));

callop (Lake Eyre perch) means callop (Lake Eyre perch (*Macquaria n.sp*));

catfish means catfish (Family Plotosidae);

Charter Boat Fishery means the fishery constituted by the *Fisheries (Scheme of Management—Charter Boat Fishery) Regulations 2005*;

coastal waters means the waters of the ocean and all bays, gulfs, straits, passages, inlets and estuaries of the State that are subject to the tidal influence of the sea; but does not include Coorong (area 1), Coorong (area 2) and Lake George;

cockle rake means a device designed and constructed to be held in the hand and consisting of a pole attached to 1 end of which is—

- (a) a cross-bar mounted upon which is a rake; and
- (b) a net bag;

continuous brake power rating, in relation to an engine of a boat, means the continuous brake power rating of the engine as stated by the engine manufacturer's specifications and in accordance with Australian Standard 4594–1999 published by Standards Australia;

Coorong means that area of water known as the Coorong, separated from that area of water known as the 'Lower Murray' at Goolwa, and from Lake Alexandrina, by the barrages known as the Goolwa, Mundoo, Boundary Creek, Ewe Island and Tauwitchere Barrages, and separated from the ocean by Sir Richard Peninsula and Younghusband Peninsula and by the geodesic from the mouth of the River Murray where it enters the ocean from high water mark on the seaward side of the headland of Sir Richard Peninsula to high water mark on the seaward side of the headland of Younghusband Peninsula;

Coorong (area 1) means the waters of the Coorong separated from that area of water known as the 'Lower Murray' at Goolwa, and from Lake Alexandrina, by the barrages known as the Goolwa, Mundoo, Boundary Creek, Ewe Island and Tauwitchere Barrages, separated from the waters of the Coorong south east of Tauwitchere Barrage by a straight line drawn westerly from Pelican Point to Gnurlung Point on Younghusband Peninsula, and separated from the ocean by Sir Richard Peninsula and Younghusband Peninsula and the geodesic from the mouth of the River Murray where it enters the ocean from high water mark on the seaward side of the headland of Sir Richard Peninsula to high water mark on the seaward side of the headland of Younghusband Peninsula;

Coorong (area 2) means the waters of the Coorong bounded at its north western extremity by a straight line drawn westerly from Pelican Point to Gnurlung Point on Younghusband Peninsula, then in a generally south easterly direction to the most southerly limit of the lagoon proper, and separated from the ocean by the Younghusband Peninsula;

Coorong coastal waters means the waters of the ocean from position latitude 35° 31.3' south, longitude 138° 46.3' east (Goolwa Beach Road) to position latitude 36° 49.7' south, longitude 139° 51.1' east (Kingston Jetty);

corf includes any floating or submerged holding box or container;

crab net means a device used to take crabs (Family Portunidae) consisting of a drop net or a net in the form of a bag or cone attached to a hoop at its opening;

crab pot means a fish trap that—

- (a) is designed and constructed for the purpose of taking blue crabs (*Portunus pelagicus*); and
- (b) has a maximum height of 650 millimetres; and
- (c) has a maximum diameter of 2 metres; and
- (d) is covered with a fish net that has—
 - (i) a minimum mesh size of 75 millimetres; or
 - (ii) an escape panel that has a minimum mesh size of 75 millimetres and is at least 700 millimetres by 300 millimetres;

crab rake means a device designed and constructed to be held in the hand and consisting of a pole attached to 1 end of which is—

- (a) a cross-bar mounted on which is a rake; and
- (b) a circular metal framed mesh;

cuttlefish means cuttlefish (*Sepia* spp.);

depth, in relation to a net, means the distance from the cork line, buoyant line or other line on which the net is slung to the lead line or to the bottom of the net if there is no lead line such distance to be measured when the cork line, buoyant line or other line on which the net is slung is taut and the lead line or the bottom of the net, if there is no lead line, is hanging free and out of water;

drop line means a device consisting of a length of line with hooks attached by snoods along its length and that is anchored by a weight, buoyed at the surface and deployed vertically through the water;

drop net means a net that consists of 2 hoops, the top hoop having a diameter not smaller than that of the bottom hoop, to which netting is attached so as to form a cylindrical bag or cone shaped bag;

drum net means a fish trap consisting of mesh supported by 3 large diameter bands to form a body or shape which is closed at 1 end and a cove at the other;

electro-fishing means the taking of fish by using a device consisting of a power source anode or cathode designed and constructed to apply an electric field to water so as to attract or stun fish;

fishing reach means a reach of the River Murray proper in which the holder of a fishery licence in respect of the River Fishery may, pursuant to that licence, take fish for the purpose of trade or business;

fish net means any net other than a hand net (including a dab net, dip net or shrimp net), hoop net, drop net or a prawn trawl net;

fish trap means any device that is designed and constructed to trap fish and has an entrance or cove;

fyke net means a fish trap consisting of a series of large diameter rings which support mesh on the exterior and a series of coves along the interior with a wing or wings at 1 end;

gill net means a length of mesh net supported along its length by a rope attached to the top and bottom of the mesh and designed and constructed to be used as a static device to enmesh fish;

Gulf St. Vincent, Investigator Strait and Backstairs Passage means those waters of Gulf St. Vincent, Investigator Strait and Backstairs Passage bounded by a line commencing at the high water mark at Cape Spencer on Yorke Peninsula, then a generally south south-westerly direction to Cape Borda on Kangaroo Island, then in an easterly direction along the high water mark of the Island to Cape Willoughby, then in a generally north-easterly direction to Newland Head on Fleurieu Peninsula, then along the high water mark of the eastern and western shore shoreline of Gulf St. Vincent back to the point of commencement;

gummy shark means gummy shark (*Mustelus antarcticus*);

hand net (including a dab net, dip net or shrimp net) means a net being conical in shape attached to a hoop or ring and extending not more than 1 metre in depth from the hoop or ring, the hoop and ring being attached to a rigid handle and having a diameter that does not exceed 1 metre;

hand fish spear means a fish spear propelled by human power without the use of any explosive, spring, elastic material or mechanism;

hand line means fishing line used without a rod and to which not more than 3 fishing hooks are attached (for the purpose of this definition not more than 5 hooks joined by threading the point of 1 through the eye of another, or by fastening their shanks together will be taken to be 1 hook);

hauling net means a net hauled by a rope 1 end of which is securely anchored to the sea bed or attached to a securely anchored boat or securely attached to the shore;

hoop net means a net consisting of 1 hoop of a diameter not exceeding 107 centimetres to which netting is attached in the form of a cone or bag that does not extend more than 92 centimetres from the hoop;

in any 1 day means during the period commencing at midnight and ending at the midnight next following;

inland waters means the River Murray and its tributaries, Lakes Albert and Alexandrina, Lake George, the Coorong above the Murray Mouth and all the waters of the State that are fresh waters;

Lakes Albert and Alexandrina means all of the waters of Lake Albert and Lake Alexandrina situated downstream of the punt that services the main road joining the township of Wellington to the township of Wellington East, and separated from the Coorong by land and by the barrages known as Goolwa, Boundary Creek, Ewe Island and Tauwichee Barrages, and includes those waters of the Finnis River and Currency Creek situated upstream from Lake Alexandrina to the first road bridge by which they are crossed;

large catfish means catfish that exceeds 33 centimetres in length;

large mesh monofilament net means a monofilament mesh net that—

- (a) has a mesh size exceeding 115 millimetres; and
- (b) consists of line with a minimum breaking strain of not less than 7 kilograms;

large mesh multifilament hauling net means a multifilament hauling net that—

- (a) has a mesh size exceeding 95 millimetres; and
- (b) consists of line with a minimum ply of not less than 21;

large mesh net means a mesh net or gill net with a mesh size of not less than 150 millimetres;

large mullet means mullet that exceeds 75 centimetres in length;

large salmon means salmon that exceeds 35 centimetres in length;

large snapper means snapper that exceeds 60 centimetres in length;

length —

- (a) in relation to a fish—means the distance from the foremost part of the head to the end of the tail;
- (b) in relation to a net—means the length of that part of the cork line, buoyant line or other line on which the net is slung;

licensed person, in relation to a fishing activity, means—

- (a) a person who, for the purpose of trade or business, is engaged in a fishing activity of a class that constitutes the fishery in respect of which the person holds a licence; or
- (b) a person acting as the agent of a holder of such a licence;

long line means a length of line to which is attached 1 or more traces or hooks and which is anchored and buoyed at 1 or both ends;

mesh net means a net designed and constructed to enmesh fish;

mulloway means mulloway (*Argyrosomus hololepidotus*);

Murray cod means Murray cod (*Maccullochella peeli*);

Murray Mouth means those waters within 500 metres from any point on the geodesic from a point at high water mark on the most south-easterly corner from the seaward side of Youngusband Peninsula to a point at high water mark on the most south-westerly corner from the seaward side of Sir Richard Peninsula;

mussel dredge means a device that—

- (a) is designed and constructed to be held in the hand so as to facilitate the taking of fish by scraping the bed of any waters; and
- (b) is not more than 1 metre wide; and
- (c) has attached to it a net not more than 1 metre deep;

non-commercial purpose means a purpose other than trade or business;

Northern Zone has the same meaning as in the *Fisheries (Scheme of Management—Rock Lobster Fisheries) Regulations 1991*;

on the same day means during the period commencing at midnight and ending at the midnight next following;

overall length, in relation to a boat, means the horizontal distance between—

- (a) a perpendicular dropped from the extremity of the bow of the boat, or, if a fixture or structure attached to the bow projects beyond the bow, from the extremity of that fixture or structure; and
- (b) a perpendicular dropped from the extremity of the stern of the boat, or, if a fixture or structure attached to the stern projects beyond the stern, from the extremity of that fixture or structure;

permitted device means a mesh net, a hand net (including a dab net, dip net or shrimp net), hand fish spear, spear gun, bow and arrow other than a crossbow, shrimp trap, mussel dredge, rock lobster pot, rock lobster snare, yabbie pot, drop net, hoop net, bait pump, bait fork, bait spade, razor fish tongs, crab rake, crab net, cockle net and cockle rake squid jig;

pilchard net means a purse seine net that—

- (a) is no more than 1000 metres in length; and
- (b) is no more than 200 metres in depth; and
- (c) has a minimum mesh size of 14 millimetres; and

(d) has a maximum mesh size of 22 millimetres;

power hauling method of fishing means a fishing activity involving the use of a fish net where—

- (a) the net is hauled through the water by means other than by hand; and
- (b) not more than 1 boat is used to haul the net; and
- (c) 1 end of the net is anchored so as to secure that end to the sea bed while—
 - (i) the net is shot out; or
 - (ii) 1 end of the net is being hauled back to the other end;

prawn means western king prawn (*Penaeus latisulcatus*);

prawn trawl net means a trawl net that is designed and constructed for the taking of prawn;

purse seine net means a long winged hauling net with a bunt and a pursing line attached by rings to the bottom mesh or foot rope;

revoked regulations means the regulations revoked by regulation 3;

ring net means a mesh net that has floats on the head line and leads on the bottom line and is designed and constructed to encircle a school of fish;

River Murray proper means all the waters of the River Murray and its anabranches, tributaries, lagoons and lakes situated upstream of the punt which services the main road joining the township of Wellington to the township of Wellington East;

rock lobster means southern rock lobster (*Jasus edwardsii*);

rock lobster fishery means—

- (a) the Northern Zone Rock Lobster Fishery; or
- (b) the Southern Zone Rock Lobster Fishery;

rock lobster pot means a fish trap that is designed and constructed for the purpose of taking rock lobster;

rock lobster snare means a device that—

- (a) consists of a noose attached to a length of tubing; and
- (b) is designed and constructed for the taking of rock lobster;

rod and line means a rod to which is attached a fishing line having not more than 3 fishing hooks attached to it (and for the purpose of this definition not more than 5 hooks joined by threading the point of 1 through the eye of another or by fastening their shanks to each other will be taken to be 1 hook);

salmon means salmon (*Arripis truttaceus*);

sand crab means sand crab (*Ovalipes australiensis*);

sand crab pot means a fish trap that—

- (a) is designed and constructed for the purpose of taking sand crabs (*Ovalipes australiensis*); and
- (b) has a maximum height of 450 millimetres; and

- (c) has a maximum diameter of 1.5 metres; and
- (d) is covered with a fish net that has—
 - (i) a minimum mesh size of 75 millimetres; or
 - (ii) an escape panel that has a minimum mesh size of 75 millimetres and is at least 700 millimetres by 300 millimetres;

scallop dredge means a device consisting of mesh supported by framework that is designed and constructed to be pulled behind a boat so as to facilitate the taking of fish by scraping the bed of any waters;

school shark means school shark (*Galeorhinus galeus*);

set line includes any device using hooks and known as a cross line, springer, side line, long line or buoyed line;

set net means any static mesh net;

set-net method of fishing means a fishing activity involving the use of a fish net—

- (a) of up to 600 metres in length; and
- (b) having a mesh size of at least 50 millimetres and less than 150 millimetres, and in which the fish net is run out into the water and set, the ends of the fish net not meeting or being joined;

shrimp trap means a fish trap that is designed and constructed for the purpose of taking shrimps (Suborder Natantia);

small catfish means catfish that does not exceed 33 centimetres in length;

small mesh monofilament net means a monofilament mesh net that—

- (a) has a mesh size exceeding 50 millimetres but not exceeding 64 millimetres; and
- (b) consists of line with a minimum breaking strain of not less than 5.5 kilograms;

small mesh multifilament hauling net means a multifilament hauling net that—

- (a) has a mesh size exceeding 50 millimetres but not exceeding 64 millimetres; and
- (b) consists of line with a minimum ply of not less than 15;

small mullo way means mullo way that is at least 46 centimetres in length but does not exceed 75 centimetres in length;

small salmon means salmon that is at least 21 centimetres in length but does not exceed 35 centimetres in length;

small snapper means snapper that is at least 38 centimetres in length but does not exceed 60 centimetres in length;

snapper means snapper (*Pagrus auratus*);

southern bluefin tuna means southern bluefin tuna (*Thunnus maccoyii*);

Southern Zone has the same meaning as in the *Fisheries (Scheme of Management—Rock Lobster Fisheries) Regulations 1991*;

spear gun means a device for spearing fish consisting of a spear and an apparatus for discharging the spear by means of explosive, spring or elastic material or other mechanical means;

swinger net means a non-static gill net with a rope attached which rope is anchored to the shore so as to enable the net to drift with the aid of offshore and longshore currents;

trawl net includes a lampara net, Danish seine net, beam trawl net or otter trawl net and any net towed by a boat;

trot line means a combination of—

- (a) buoyed lines anchored or weighted; and
- (b) a line or lines connecting the buoyed lines and supported under the surface of the waters by a line of floats; and
- (c) a line or lines attached to the connecting line and weighted to which are attached hooks or snoods with hooks;

undersize fish means fish that are undersize as determined in accordance with Schedule 6 but does not include—

- (a) flounder (Family Pleuronectidae) (Family Bothidae) taken by an unlicensed person; or
- (b) fish taken by a person under the *Fisheries (Exotic Fish, Fish Farming and Fish Diseases) Regulations 2000* from a fish farming operation in respect of which the person is registered;

unlicensed person, in relation to a fishing activity, means a person who is not a licensed person in relation to that activity;

waters of the State means all the waters to which the Act applies;

yabbie pot means a fish trap designed and constructed for the purpose of taking yabbie (*Cherax destructor*);

yellowfin tuna means yellowfin tuna (*Thunnus albacares*).

- (2) In these regulations, a reference to the taking of fish or a particular species of fish is to be taken to include any act that is preparatory to or involved in the taking of that fish or species of fish, whether or not any such fish or species of fish have been taken.
- (3) In these regulations, a reference to **using** or to **the use of a device** by a person engaged in a fishing activity includes a reference to using the device—
 - (a) to take fish; and
 - (b) in or as part of any act preparatory to, or involved in, the taking of fish.
- (4) In these regulations, a reference to a person **carrying a device** includes a reference to—
 - (a) having the device on or about his or her person; or
 - (b) having the device so near to his or her person that he or she is able to exercise physical control over the device.

- (5) For the purposes of these regulations, the mesh size of a net is to be determined as follows:
- (a) 10 meshes of the net are to be measured by the method referred to in paragraph (b) and the sum is to be divided by 10;
 - (b) the distance between 1 corner of the mesh of the net and the corner of the same mesh diagonally opposite to that corner (with the corners extended so that as near as is practicable there is no space between adjacent threads of mesh) is to be measured by the following method:
 - (i) that part of the net containing the mesh to be measured must be soaked in water for at least 5 minutes; and
 - (ii) immediately after soaking a weight of 1.5 kilograms must be attached or slung to 1 corner of the mesh to be measured (the *weighted corner*); and
 - (iii) while the weight is attached to or slung on the weighted corner the distance between the weighted corner and the corner of the same mesh diagonally opposite to the weighted corner must be measured, the measurement being taken from the inside of each corner.
- (6) For the purposes of these regulations—
- (a) a device registered for use for non-commercial purposes is attended only if it is at all times actually being attended by the person in whose name it is registered under regulation 8 and that person is at all times—
 - (i) while the device is in the waters of Lake George—no more than 50 metres from the high water mark of the Lake;
 - (ii) while the device is in any other waters of the State—no more than 50 metres from any part of the device;
 - (b) a device registered for use pursuant to a fishery licence is attended only if it is at all times actually being attended by the person who holds the licence, or a person acting as an agent of the holder of the licence, and that person is at all times—
 - (i) while the device is in the waters of Lake George—no more than 50 metres from the high water mark of the Lake;
 - (ii) while the device is in any other waters of the State—no more than 50 metres from any part of the device.

Part 2—Regulation of fishing

5—Fishing activities of a prescribed class (section 41 of the Act)

For the purposes of section 41 of the Act, each class of fishing activity described in Schedule 1 is a fishing activity of a prescribed class.

6—Protected fish (section 42 of the Act)

For the purposes of section 42 of the Act, the following classes of fish are declared to be protected:

- (a) fish of the genus *Ambassis*, *Mogurnda* or *Nannoperca*;
- (b) female fish of the following species if carrying external eggs:
 - Blue crab (*Portunus pelagicus*)
 - Giant crab (*Pseudocarcinus gigas*)
 - Rock lobster (*Jasus edwardsii*)
 - Yabbie (*Cherax destructor*);
- (c) fish of the following species:
 - Freshwater catfish (*Tandanus tandanus*)
 - Murray River crayfish (*Euastacus armatus*)
 - River blackfish (*Gadopsis marmoratus*)
 - Silver perch (*Bidyanus bidyanus*)
 - Trout cod (*Maccullochella macquariensis*)
 - White pointer shark (*Carcharodon carcharias*);
- (d) blue groper (*Achoerodus gouldii*) in the following waters:

All of the waters of the ocean north of the geodesic: Commencing at high water mark on the shore at Newland Head, position latitude 35° 39' 00" south, and longitude 138° 31' 00" east, then in a direction of 238°T, to high water mark on the shore at Cape Willoughby in position latitude 35° 51' 10" south, and longitude 138° 07' 40" east, then from high water mark on the shore in position latitude 35° 53' 10" south and longitude 136° 32' 00" east, (West Coast of Kangaroo Island adjacent to West Bay), in a direction of 321°T to high water mark on the shore at Cape Carnot, position latitude 34° 56' 45" south, and longitude 135° 37' 30" east;
- (e) fish of the family Syngnathidae.

7—Sale, purchase or possession of fish (section 44 of the Act)

- (1) For the purposes of section 44(2) of the Act, undersize fish are fish of a prescribed class.
- (2) For the purposes of section 44(2AA) of the Act, 25 abalone is the prescribed quantity.

- (3) For the purposes of section 44(4) of the Act—
- (a) fish of a class set out in column 1 of Schedule 8 are fish of a prescribed class; and
 - (b) the quantity set out in column 2 of that Schedule alongside a class of fish is the prescribed quantity of fish of that class.

8—Registration of devices for recreational use

- (1) This regulation applies in relation to a mesh net or rock lobster pot to be used by a person (including the holder of a fishery licence) for purposes other than trade or business.
- (2) An application for registration of a device to which this regulation applies must—
- (a) be made to the Director in a form approved by the Director; and
 - (b) be accompanied by the fee (if any) specified in Schedule 5.
- (2a) An application for registration of a rock lobster pot—
- (a) cannot be made earlier than 2 months before the commencement of the registration period during which the registration is to take effect;
 - (b) cannot be made at all if the applicant has by a separate application obtained the registration of another rock lobster pot for a period commencing during the same registration period.
- (3) Before registering a device under this regulation the Director may require the applicant to produce the device for examination by a fisheries officer.
- (3a) Before registering a rock lobster pot under this regulation the Director must be satisfied that the applicant is a natural person of at least 15 years of age.
- (4) The Director must refuse to register a device if—
- (a) it is not produced for examination pursuant to a requirement made under subregulation (3); or
 - (b) the applicant could not, on registration of the device, lawfully use it for the purpose of taking fish in the waters of the State; or
 - (c) registration would result in the number of devices registered in the applicant's name being in excess of the greatest number of devices that the applicant may lawfully use, at any 1 time, in the waters of the State.
- (5) If the Director is satisfied that—
- (a) an application to register a device has been made in accordance with this regulation; and
 - (b) the device complies with these regulations,
- the Director may register the device in the name of the applicant—
- (c) in the case of a rock lobster pot—
 - (i) if the application was made on or before the commencement of the registration period—for the whole of the registration period;

- (ii) if the application was made after the commencement of the registration period—for a period commencing on the date of grant of the application and ending on the expiry of the last day of the registration period; or
 - (d) in any other case—for a period not exceeding 3 years.
- (6) The Director must, on registering a device, allot a registered number to the device.
- (7) The Director must, on registering a rock lobster pot, issue to the person in whose name the pot is registered a tag bearing the registered number allotted to the pot.
- (8) If the Director is satisfied by statutory declaration or such other evidence as the Director may require that a tag issued in respect of a rock lobster pot registered under this regulation has been lost, stolen, damaged or destroyed, the Director must, on application made in a form approved by the Director and payment of the fee specified in Schedule 5, issue a replacement tag.
- (9) In this regulation—
registration period, in relation to a rock lobster pot, means the period beginning on 1 October in any year and ending on 31 May in the following year.

9—Registration of devices for commercial use

- (1) This regulation applies in relation to any device, other than a rod and line or hand line, to be used by the holder of a fishery licence pursuant to the licence (being a device that may be lawfully used for that purpose).
- (2) An application for registration of a device to which this regulation applies must be made in writing in a form approved by the Director.
- (2a) The Director may not register a device unless the applicant has paid—
 - (a) the registration fee (if any) specified in Schedule 5; or
 - (b) the first instalment of the registration fee, in accordance with subregulation (2b).
- (2b) A registration fee may be paid by 4 equal instalments payable on or before the date of grant of registration and 1 October, 1 January and 1 April following the date of grant.
- (2c) If an instalment of a registration fee is not paid in full within 21 days after the due date for payment, an additional amount equal to 10 per cent of the amount of the instalment is payable.
- (2d) If—
 - (a) an instalment of a registration fee is not paid in full on or before the due date; or
 - (b) an additional amount is required to be paid for late payment of an instalment of a registration fee,the amount unpaid may be recovered from the holder of the licence pursuant to which the registered device may be used or the person who last held the licence as a debt due to the Crown.
- (3) Before registering a device under this regulation the Director may require the applicant to produce the device for examination by a fisheries officer.

- (4) The Director must refuse to register a device if—
- (a) it is not produced for examination pursuant to a requirement made under subregulation (3); or
 - (b) the applicant could not, on registration of the device, lawfully use it for the purpose of taking fish in the waters of the State; or
 - (c) registration would result in the number of devices registered in the applicant's name being in excess of the greatest number of devices that the applicant may lawfully use, at any 1 time, in the waters of the State.
- (5) The Director may refuse to register a device despite the fact that the effect of the refusal is to prevent the taking of 1 or more species of fish that could otherwise lawfully be taken pursuant to the licence.
- (5a) The Director must not register a sand crab pot unless—
- (a) the applicant holds a licence in respect of the Marine Scalefish Fishery; and
 - (b) the Director is satisfied that at least 10 tonnes of sand crabs (*Ovalipes australiensis*) were taken pursuant to that licence during the period of 12 months commencing on 1 July 1995, 1 July 1996, 1 July 1997, 1 July 1998 or 1 July 1999 (as recorded on completed returns lodged under regulation 16 of the *Scheme of Management (Marine Scalefish Fisheries) Regulations 1991*).
- (6) If the Director is satisfied that—
- (a) an application to register a device has been made in accordance with this regulation; and
 - (b) the device complies with these regulations; and
 - (c) registration of the device would not be inconsistent with the objectives set out in section 20 of the Act,
- the Director may register the device in the name of the applicant for a period not exceeding 12 months.
- (7) The Director must, on registering a device, allot a registered number to the device.

10—Inspection of certificate of registration of devices registered for recreational use

A person using a registered device for purposes other than trade or business must, on demand by a fisheries officer, produce for inspection by a fisheries officer the certificate of registration of the device within 48 hours of that demand.

Maximum penalty: \$2 500.

11—Requirements relating to buoys

- (1) A buoy will be taken to comply with these regulations if—
- (a) it is constructed of material that is durable in water; and
 - (b) it displays the marks required by these regulations in letters and figures of not less than 7 centimetres in height; and
 - (c) —

- (i) in the case of a buoy attached to a yabbie pot, shrimp trap, hoop net, drop net or drum net used by any person to take fish in the River Murray proper, Lakes Albert and Alexandrina or the Coorong—it has a volume of not less than 2 litres;
- (ii) in any other case—it has a volume of not less than 4 litres.

12—Requirements relating to tags

- (1) A tag will be taken to comply with these regulations if—
 - (a) it is made of material that is durable and non-corrodible in water; and
 - (b) it is not less than—
 - (i) 10 centimetres in length; and
 - (ii) 5 centimetres in width; and
 - (c) it clearly display the marks required by these regulations in letters and figures of not less than 2 centimetres in height.

13—Carriage of certain devices in specified areas

- (1) A person must not carry a hand fish spear, spear gun or device that operates by means of an explosive cartridge in the areas specified in Schedule 3.
Maximum penalty: \$2 500.
- (2) It is a defence to a charge of an offence against this regulation to prove that the defendant was carrying the spear, spear gun or device only for the purpose of transporting it across the area.

14—Carriage of certain devices while using scuba etc

- (1) Subject to subregulation (2), a person must not, while using a scuba, hookah or other apparatus for breathing underwater, carry a hand fish spear, spear gun or device that operates by means of an explosive cartridge.
Maximum penalty: \$2 500.
- (2) A person may, while using a scuba, hookah or other apparatus for breathing under water, carry a device that operates by means of an explosive cartridge if—
 - (a) the device is not attached to a hand fish spear or spear gun; and
 - (b) the device is carried only for protection; and
 - (c) any fish that is injured or killed is left in the water.
- (3) Subregulation (2) does not permit the carrying of a device in an aquatic reserve or an area specified in Schedule 3.

15—Carriage of devices near lock and weirs of Murray River

A person must not carry a device within 150 metres of each side of each lock and weir of the River Murray proper.

Maximum penalty: \$2 500.

16—Distinguishing marks on boats (section 34 of the Act)

- (1) The Director must, on registering a boat under section 34 of the Act, allot to the boat a distinguishing mark consisting of 1 or more numbers or letters or a combination of numbers and letters.
- (2) The holder of a fishery licence must not use a registered boat for the purposes of engaging in a fishing activity of a class that constitutes the fishery in respect of which he or she holds a licence unless the registered boat bears distinguishing marks that—
 - (a) are painted or otherwise marked on each side of the registered boat; and
 - (b) are painted or otherwise marked in legible figures; and
 - (c) contain figures each of which—
 - (i) are not less than 150 millimetres high; and
 - (ii) are not less than 100 millimetres wide; and
 - (iii) contains no line that is less than 30 millimetres broad; and
 - (d) are clearly visible above the water line; and
 - (e) are painted in—
 - (i) black paint or otherwise marked in black if painted on a light coloured background; or
 - (ii) white paint or otherwise marked in white if painted or marked on a dark coloured background.

Maximum penalty: \$2 500.

- (3) A person must not use a dinghy as a tender to a registered boat unless it bears the same distinguishing marks as the registered boat to which it is used as a tender with the addition of the letter "T" forming part of the distinguishing marks as a prefix to them.

Maximum penalty: \$2 500.

- (4) If a boat that has been a registered boat ceases to be a registered boat the owner must, as soon as practicable after the boat ceases to be a registered boat, remove or cause to be removed any distinguishing mark that had been painted or otherwise marked on the boat.

Maximum penalty: \$2 500.

17—Aquatic or benthic flora or fauna (section 48G(9) of the Act)

For the purposes of section 48G(9) of the Act, the species of fish specified in Schedule 7 are prescribed.

18—Mutilation of certain fish

- (1) If fish of a class or species to which this regulation applies are taken in the course of fishing from a boat, a person must not mutilate those fish before they are brought ashore or landed on a jetty or other landing place.

Maximum penalty: \$2 500.

- (2) In proceedings for an offence against subregulation (1) it will be presumed, in the absence of proof to the contrary, that any mutilated fish on a boat have been mutilated by the person in charge of the boat unless that person proves that some other person mutilated them and that he or she made reasonable efforts to prevent the mutilation.
- (2a) This regulation applies to—
- (a) shark of any species (Class *Chondrichthyes*); and
 - (b) fish of a class or species referred to in Schedule 6.
- (3) This regulation does not apply in relation to—
- (a) fish that are on a boat and that within 24 hours of mutilation are to be consumed as food on that boat by persons who are on that boat; or
 - (b) fish that are on a boat and that within 24 hours of mutilation are to be used as bait in the course of a fishing activity in which persons on that boat intend, and are lawfully entitled, to engage in.
- (4) In this regulation—
- mutilate*, in relation to fish, means to divide, cut up, mangle or dismember fish in any way but does not include—
- (a) the removal of the guts or scales of fish; or
 - (b) in the case of shark—
 - (i) the removal of pelvic fins and claspers; or
 - (ii) the removal of the tail at the sub-terminal notch, leaving the caudal lobe attached to the body.

19—Provisions relating to abalone fishing

- (1) A person must not remove from the shell abalone taken pursuant to a licence in respect of the Southern Zone Abalone Fishery unless the abalone is removed on land at the premises of a registered fish processor in the course of the business of the fish processor.
Maximum penalty: \$2 500.
- (2) An unlicensed person who takes abalone in the waters of the State must bring the abalone to a position above high water mark before the abalone is removed from its shell.
Maximum penalty: \$2 500.
- (3) A person who takes abalone in the waters of the State must have attached to his or her person an effective and accurate measuring device suitable for measuring abalone.
Maximum penalty: \$2 500.
- (4) A person who takes abalone in the waters of the State must measure each abalone by using a device of a kind referred to in subregulation (3) immediately after detaching the abalone from the rock or other place to which it was attached and must immediately, with care, replace on that rock or other place to which the abalone had been attached any abalone that is undersize.
Maximum penalty: \$2 500.

- (5) Subject to subregulation (6), a person must not have in his or her possession, control or custody abalone that has been removed from its shell.
Maximum penalty: \$2 500.
- (6) Subregulation (5) does not apply to a person who has in his or her possession, control or custody abalone that has been removed from its shell if—
- (a) being an unlicensed person, the person has complied with subregulation (2); or
 - (b) the person is acting during the course of his or her work or employment at the premises of a registered fish processor that are situated on land; or
 - (c) the abalone has previously been delivered to and processed at the premises of a registered fish processor that are situated on land; or
 - (d) the abalone was taken pursuant to a licence in respect of the Western Zone Abalone Fishery or the Central Zone Abalone Fishery.
- (7) In this regulation—
land does not include waters over land.

20—Keeping of fish in corfs

A person must not store or confine fish in a corf unless, there is attached to it a red buoy that—

- (a) complies with these regulations; and
- (b) is marked with the letter "C"; and
- (c) —
 - (i) in the case of a corf owned by the holder of a fishery licence—is marked with the licence number;
 - (ii) in any other case—has attached to it a tag bearing the name and address of the owner of the corf.

Maximum penalty: \$2 500.

21—Keeping of rock lobster

- (1) A person must not store or confine a rock lobster in a corf unless he or she holds a licence in respect of a rock lobster fishery.
Maximum penalty: \$2 500.
- (2) During the period commencing 1800 hours on 31 May in any year and ending 1200 hours on the following 1 November, a person must not store or confine live rock lobster taken from the Northern Zone (regardless of when the rock lobster were actually taken).
Maximum penalty: \$2 500.
- (3) Subregulation (2) does not apply to a registered fish processor who stores or confines live rock lobster in a holding tank situated on land.

22—Duty of rock lobster fishery licence holder to mark buoys

- (1) The holder of a licence in respect of a rock lobster fishery must not deposit in the waters of the fishery more than 2 buoys that are not attached to a device.

Maximum penalty: \$2 500.

- (2) The holder of a licence in respect of a rock lobster fishery must not deposit in the waters of the fishery a buoy that is not attached to a device unless the buoy—
 - (a) complies with these regulations; and
 - (b) is marked with the letter "M" and the licence number.

Maximum penalty: \$2 500.

23—Duty to clip tail fan of rock lobster

- (1) A person who takes a rock lobster in the waters of the State must, before the rock lobster is brought ashore or landed, clip its middle tail fan in half horizontally (across the tail) and remove it (see Schedule 4).

Maximum penalty: \$2 500.

- (2) Subregulation (1) does not apply in relation to rock lobster taken pursuant to a licence in respect of a rock lobster fishery.

24—Berleying

- (1) A person must not use blood, bone, meat, offal or skin of an animal as berley (otherwise than in a rock lobster pot or other fish trap) within 2 nautical miles of—
 - (a) the mainland of the State; or
 - (b) any island or reef that forms part of the State and is exposed at low water mark.

Maximum penalty: \$2 500.

- (2) A person must not deposit or use in marine waters of the State the body, or part of the body, of a mammal.

Maximum penalty: \$2 500.

24A—Commercial bait nets not to be left unattended

- (1) Subject to subregulation (2), a bait net that is registered for use pursuant to a fishery licence must not be left unattended after it has been set in waters from a registered boat.
- (2) A bait net that has a mesh size of not less than 50 millimetres may be left unattended for a continuous period not exceeding 12 hours.
- (3) If subregulation (1) is contravened, the registered owner and registered master of the registered boat are each guilty of an offence.

Maximum penalty: \$2 500.

25—Requirement to remove anchors etc from nets removed from Lakes and Coorong Fishery

- (1) A person who—
- (a) for the purpose of trade or business engages in a fishing activity of a class that constitutes the Lakes and Coorong Fishery; and
 - (b) for the purposes of engaging in that activity places a net in the waters of the Fishery,

must, on removing the net from those waters, immediately remove from those waters any buoy, anchor or other device or thing to which the net was attached.

Maximum penalty: \$2 500.

- (2) For the purposes of subregulation (1), if—
- (a) a net is removed from the waters of the Lakes and Coorong Fishery for the purpose of carrying out an action that is part of a fishing activity of a class that constitutes the Fishery; and
 - (b) the net is returned to those waters immediately after the action is carried out, the net will not be taken to have been removed from the waters.

26—Marking of receptacles in which fish are transported, consigned for sale etc

- (1) A person who is—
- (a) the holder of a fishery licence; or
 - (b) a registered fish processor; or
 - (c) otherwise involved in a business that involves, the handling, storage, movement or dealing with fish,

must not transport, consign for or have on sale, in a receptacle any fish unless there is legibly marked on the outside of the receptacle or on a label attached to the outside of the receptacle—

- (d) the person's full name or initials and surname; and
- (e) the person's address; and
- (f) if the person is the holder of a fishery licence or aquaculture licence—the person's licence number.

Maximum penalty: \$2 500.

- (2) In subregulation (1)—
- receptacle** includes any container, box or other package.

Part 3—Miscellaneous

27—Fees

- (1) The fees set out in Schedule 5 are prescribed for the purposes of the Act and these regulations.
- (2) If application is made for the issue of a permit or the granting of an exemption by the Minister, the Minister may waive the prescribed fee if satisfied that it is appropriate to do so in a particular case.
- (3) If application is made for the issue of a permit or duplicate authority by the Director, the Director may waive the prescribed fee if satisfied that it is appropriate to do so in a particular case.

28—Notice of seizure of device

Pursuant to section 28(10)(d) of the Act, notice of seizure of a device must be given by notice published in the Gazette within 28 days of the seizure of the device containing—

- (a) a description of the device; and
- (b) the place where, and the date on which, it was seized; and
- (c) the place where it may be inspected for a period of 1 month following the date of the notice.

29—Research and Development Fund—prescribed fishing industry body

For the purposes of section 32(3)(b)(ii) of the Act, the South Australian Fishing Industry Council is a prescribed fishing industry body.

30—Notice of address for service of documents

Pursuant to section 71 of the Act, notice of an address for service must be given to the Director—

- (a) in the case of a person applying for a fishery licence—in the application for the licence;
- (b) in the case of a person applying for renewal of a fishery licence—in the application for the renewal;
- (c) in the case of a person who has given notice in accordance with paragraph (a) or (b) but who wishes to change the address given—by notice in writing left at or sent by prepaid post to the office of the Director.

31—Evidentiary provision

In proceedings for an offence against these regulations or any other regulations made under the Act, if it is proved that a person apparently over the age of 15 years was on board a registered boat on a particular day while the registered boat was being used for the purpose of engaging in a fishing activity of a class that constitutes a fishery, it will be presumed, in the absence of proof to the contrary, that the person was on that day engaged in the fishing activity for which purpose the registered boat was being used.

32—Expiation of alleged offences

- (1) The expiation fees set out in Schedule 9 are fixed for alleged offences against the Act or the regulations specified in the Schedule.
- (2) Text set out in italic type in a column headed "Description of Offence" in the tables in Schedule 9 is a description for convenience purposes only and is not to be taken to define the offence for which a particular amount is fixed as the expiation fee.

Schedule 1—Classes of fishing activities prescribed for purposes of section 41 of Act

- 1 The taking of fish in the waters of the State by any person for purposes other than trade or business by using a device other than—
 - (a) a permitted device; or
 - (b) a rod and line; or
 - (c) a hand line.
- 2 The taking of fish by any person in the waters of the State by using wire trace of 2mm or greater gauge in conjunction with fishing hooks size 12/0 or greater.
- 3 The taking of fish in the waters of the State for purposes other than trade or business by using a mesh net other than a mesh net registered under regulation 8 in the name of a person who—
 - (a) registered a mesh net under that regulation (or the regulation previously in force) before 30 January 1986; and
 - (b) registered or applied for the registration of a mesh net pursuant to that regulation within 12 months after the expiration of the term of each such registration granted to that person whether before or after that date.
- 4 The taking of fish in coastal waters by an unlicensed person, otherwise than the taking of fish (other than rock lobster) in coastal waters by an unlicensed person by using a number of hoop nets such number being no less than 4 and no more than 10, if at the same time he is using no other device—
 - (a) by using, at any 1 time, more than the permitted number of any kind of device referred to in column 1 of Table 1 the permitted number in respect of each device being the number appearing immediately alongside of each device in column 2 of Table 1; or
 - (b) by using, at any 1 time, a combination of the different kinds of devices referred to in column 1 of Table 1 where such combination consists of or includes—
 - (i) more than 2 kinds of the different kinds of devices referred to in Part A of Table 1; or
 - (ii) more than 1 kind of the different kinds of devices referred to in Part B of Table 1.

Table 1

Column 1	Column 2
Part A	
hand net	1
spear gun	2
mussel dredge	1
Part B	
rock lobster pot	2
hoop net	3
drop net	3
5	The taking of fish in coastal waters by an unlicensed person by using a fish net.
6	The taking of fish in coastal waters by a licensed person by using a hauling net—
	(a) from 1 a.m. on 23 December in any year to midnight on 1 January in the following year; or
	(b) from 1 a.m. on the Thursday preceding Easter Sunday in any year to midnight on the following Monday; or
	(c) from 1 a.m. hours on a Thursday in any year to midnight on the following Sunday if the Friday in that period is a public holiday; or
	(d) from 1 a.m. hours on a Friday in any year to midnight on the following Monday if that Monday is a public holiday.
7	The taking of fish in coastal waters by an unlicensed person by using a long line.
8	The taking of fish in the waters of the State by a licensed person by using a long line without attending the line.
10	The taking of fish by an unlicensed person in the River Murray proper by using—
	(b) a fish net; or
	(c) at any 1 time—
	(i) more hand nets than 1; or
	(ii) more shrimp traps than 1; or
	(iii) more yabbie pots than 3; or
	(iv) more drop nets than 3; or
	(v) more hoop nets than 10; or
	(vi) more than 1 kind of the kinds of devices referred to in subparagraphs (iii) and (iv); or
	(vii) more than 3 hoop nets and 2 different kinds of the kinds of devices referred to in subparagraphs (i) and (ii).
11	The taking of fish by any person in the waters of the State by use of a bow and arrow, except for the taking of carp (Family Cyprinidae)—
	(a) in the waters of the River Murray other than the main stream; and

- (b) during daylight hours; and
 - (c) by use of a bow and arrow (not being a crossbow) where the person keeps, while using the bow and arrow, a distance of at least 50 metres from all other persons not directly involved in that fishing activity.
- 12 The taking of fish by an unlicensed person in Coorong (area 1) by using a fish net between midnight on 24 December in any year and sunset on 7 January in the following year.
- 13 The taking of fish by an unlicensed person—
 - (a) in Coorong (area 1) during 1 April to 31 October (both inclusive); or
 - (b) in Coorong (area 2),by using—
 - (c) a mesh net—
 - (i) the length of which exceeds 75 metres; or
 - (ii) the mesh of which does not exceed 50 millimetres or exceeds 64 millimetres; or
 - (d) a mesh net—
 - (i) otherwise than by setting it so that it floats with no part of the net more than 1 metre below the surface of the water; or
 - (ii) without attending the net; or
 - (e) by using at any 1 time—
 - (i) more mesh nets than 1; or
 - (ii) more hand nets than 1; or
 - (iii) more hoop nets than 10; or
 - (iv) more than 3 hoop nets and 1 mesh net; or
 - (v) more than 3 hoop nets and 1 hand net.
- 14 The taking of fish by an unlicensed person in Coorong (area 1) during 1 November to 31 March (both inclusive) by using—
 - (a) a fish net; or
 - (b) at any 1 time—
 - (i) more hand nets than 1; or
 - (ii) more hoop nets than 10; or
 - (iii) more than 3 hoop nets and 1 hand net.
- 15 The taking of fish by an unlicensed person in Lakes Albert and Alexandrina by using—
 - (b) a mesh net—
 - (i) the length of which exceeds 75 metres; or
 - (ii) the mesh of which does not exceed 110 millimetres or exceeds 150 millimetres; or

- (c) a mesh net—
 - (i) otherwise than by setting it so that it floats with no part of the net more than 2 metres below the surface of the water; or
 - (ii) without attending the net; or
 - (d) at any 1 time—
 - (i) more mesh nets than 1; or
 - (ii) more hand nets than 1; or
 - (iii) more shrimp traps than 1; or
 - (iv) more yabbie pots than 3; or
 - (v) more drop nets than 3; or
 - (vi) more hoop nets than 10; or
 - (vii) more than 2 different kinds of the kinds of devices referred to in subparagraphs (i), (ii) and (iii); or
 - (viii) more than 1 kind of the kinds of devices referred to in subparagraphs (iv) and (v); or
 - (ix) more than 3 hoop nets and 2 different kinds of the kinds of devices referred to in subparagraphs (i), (ii) and (iii).
- 16(1) The taking of fish by an unlicensed person in Lake George by using, at any 1 time—
- (a) more than 2 mesh nets; or
 - (b) more than 1 hand net.
- (2) In subclause (1)—
- mesh net*** means a mesh net that—
- (a) is not more than 75 metres in length; and
 - (b) has a mesh size of at least 7 centimetres.
- 17 The taking of fish in the waters of the State by any person by using, at any 1 time, more than 2 rods and lines.
- 18 The taking of fish in the waters of the State by any person by using, at any 1 time, more than 2 hand lines.
- 19 The taking of fish in the waters of the State by any person by using—
- (a) a rod and line if at the same time he or she is using more than 1 hand line; or
 - (b) a hand line if at the same time he or she is using more than 1 rod and line.
- 20(1) The use of more than 1 teaser line by any person from a jetty, pier, wharf or breakwater abutting land.
- (2) The leaving unattended by any person of a teaser line after the line has been deployed in the waters of the State by that person.
- (3) In this clause—
- teaser line*** means a line (without an attached hook) used to lure or attract fish.

- 21 The taking of fish in the waters of the State by any person for purposes other than trade or business by using a mesh net or rock lobster pot that is not registered under regulation 8 in the name of that person.
- 22 The taking of fish in the waters of the State by a licensed person for the purposes of trade or business by using any device (other than a rod and line or hand line) that is not registered under regulation 9.
- 23 The taking of fish by any person—
- (a) in the waters of Lakes Albert and Alexandrina, the Coorong or in any contiguous waterway downstream of Wellington by using a mesh net or set line unless—
 - (i) 1 extremity of the net or line is marked by 2 floating black buoys that comply with these regulations; and
 - (ii) the other extremity of the net or line is marked by a floating yellow buoy that complies with these regulations; and
 - (iii) if the net or line exceeds 50 metres in length, the net or line is marked with floating red buoys that comply with these regulations and are placed at intervals not exceeding 50 metres; or
 - (b) in the waters of the River Murray upstream of Wellington or in any contiguous waterway by using a mesh net or set line placed at a depth beneath the water of less than 1.7 metres unless—
 - (i) the extremity of the net or line that is closest to the shore is marked by a floating yellow buoy that complies with these regulations; and
 - (ii) the extremity of the net or line that is furthest from the shore is marked by a floating white buoy that complies with these regulations; and
 - (iii) if the net or line exceeds 50 metres in length—the net or line is marked with floating red buoys that comply with these regulations and are placed at intervals not exceeding 50 metres; or
 - (c) in the waters of the River Murray upstream of Wellington or in any contiguous waterway by using a mesh net or set line placed at a depth beneath the water of not less than 1.7 metres unless—
 - (i) the extremity of the net or line that is closest to the shore is marked by a floating yellow buoy that complies with these regulations; and
 - (ii) the net or line is marked with a floating white buoy that complies with these regulations and the buoy is placed at a distance of at least 3 metres from the yellow buoy, indicating the direction in which the net or line is placed; or
 - (d) in any other waters of the State by using a mesh net or set line unless—
 - (i) 1 extremity of the net or line is marked by a floating yellow buoy that complies with these regulations; and
 - (ii) the other extremity of the net or line is marked by 2 floating black buoys that comply with these regulations.

- 24 The taking of fish by any person in the waters of the State by using a fish net (other than a mesh net or drum net) unless—
- (a) 1 extremity of the net is marked by a floating yellow buoy that complies with these regulations; and
 - (b) the other extremity of the net is marked by 2 floating black buoys that comply with these regulations.
- 25 The taking of fish by a licensed person by using a drop line that is not marked by a floating yellow buoy that complies with these regulations.
- 26 The taking of fish by a licensed person by using a trot line that is not marked—
- (a) at 1 end by a floating yellow buoy that complies with these regulations; and
 - (b) at the other end by 2 floating black buoys both of which comply with these regulations.
- 27 The taking of fish in the waters of the State by a licensed person by using more than 400 hooks attached to a set line or set lines.
- 28(1) The taking of fish by a licensed person by using a device (other than a rod and line, handline or hand held device) that does not have—
- (a) in the case of a device required by these regulations to have a buoy or buoys attached to it—the person's licence number marked on the buoy or buoys or on a tag that complies with these regulations and is attached to the device;
 - (b) in any other case—a tag attached to the device that complies with these regulations and bears the person's licence number.
- (2) For the purposes of subclause (1), **licensed person** does not include a person who holds a licence in respect of the River Fishery.
- 29 The taking of fish by any person in inland waters by using a yabbie pot that—
- (a) is more than 1 metre at its greatest dimension; or
 - (b) has no more than 2 entrance funnels; or
 - (c) has an entrance funnel that exceeds 7.5 centimetres at its narrowest part.
- 30 The taking of fish by any person—
- (a) by using a fish net in any of the waters of the State specified in Schedule 2 Part 1; or
 - (b) by using a gill net, purse seine net (or other hauling net) in any of the waters of the State specified in Schedule 2 Part 2.
- 31 The taking of fish by any person by using a fish net in the following waters between 1 January and 31 March (both days inclusive) in any year:
- Bay of Shoals*
Comprising all the waters of the Bay of Shoals inside a line drawn from The Bluff (latitude 35°38.30'S, longitude 137°37.08'E) to Cape Rouge (latitude 35°35.87'S, longitude 137°37.53'E).
- 32 The taking of fish by any person in the waters of the State, except the waters of the Coorong and the River Murray, by using a fish net within 100 metres of any line or part of a line which is held in the hand of any person or is attached to any rod or reel which is held in the hand of any person.

- 33 The taking of fish by any person by using a hauling net that exceeds 370 metres in length in the following waters:
- Venus Bay (West Coast)*
Comprising all the waters of Venus Bay adjoining the hundreds of Wright and Rounsevell, county of Robinson bounded as follows:
- Situated west of a straight line extending southerly across Venus Bay from the most westerly corner of section 72, hundred of Wright to the Trigonometrical Station on Point Weyland, south of Block C, hundred of Rounsevell.
- 34 The taking of fish by any person by using a fish net—
- (a) in the waters of Spencer Gulf situated northerly from the parallel of latitude passing through the beacon on Douglas Bank (being latitude 32°48.54'S); or
 - (b) in the waters of Spencer Gulf commencing at the 5 metre mark near Gibbon Point, longitude 136°47.00'E, then easterly along latitude 33°50.00'S to intersect longitude 137°14.00'E, then northerly to the 5 metre mark near Shoal Water Light; or
 - (c) in any other waters of Spencer Gulf (being waters that are deeper than 5 metres), other than—
 - (i) the taking of fish by any person by using a large mesh net; or
 - (ii) the taking of salmon (*Arripis truttaceus*) by a licensed person by using a fish net; or
 - (iii) the taking of fish by a licensed person by using a fish net, such fish being taken for live bait for tuna poling.
- 35 The taking of fish by any person by using a fish net, otherwise than the taking of fish by a licensed person by using a fish net to take live bait for tuna poling, in the following waters:
- Streaky Bay—Blanche Port*
Those waters of Streaky Bay and Blanche Port bounded as follows:
- Commencing at a point at high water mark on Point De Mole, latitude 32° 30' 25" south and longitude 133° 59' 20" east, then along the geodesic (165°T) to a point at high water mark on Cape Bauer, (Wandoma) latitude 32° 43' 22" south and longitude 134° 03' 25" east, then following the line of high water mark around Blanche Port and Streaky Bay back to the point of commencement.
- 36 The taking of fish by any person by using a fish net having a mesh of less than 7 centimetres in the following waters:
- Lake George, Beachport*
- All the waters of Lake George situated in the Hundreds of Lake George and Rivoli Bay.
- 37 The taking of fish by any person by using a fish net in any of the waters of the ocean and bays and gulfs of the State between the meridians of longitude 129° east and 140° 58' 00" east at a depth exceeding 5 metres otherwise than—
- (a) the taking of fish by a large mesh net; or

- (b) the taking of salmon (*Arripis truttaceus*) by a licensed person by using a fish net; or
- (c) the taking of fish by a licensed person by using a fish net for the purposes of live bait for tuna poling; or
- (d) the taking of fish by a licensed person by using a bait net for the purpose of bait to be used for the taking of rock lobster in the waters of the fishery in respect of which he or she holds a licence.

38(1) The taking of fish by any person by using any device (other than a rod and line, hand line or hand net) in the following waters:

Kangaroo Island Rivers

The waters of Chapman's River (Hundred of Dudley), Harriet River (Hundred of Newland), Eleanor River (Hundreds of Newland and Seddon), Western River (Hundreds of Duncan and Gosse) and Middle River (Hundred of Duncan), together with all waters of the sea within a radius of 50 metres of the mouth of each of those rivers.

River Onkaparinga

The waters of the River Onkaparinga.

Baird Bay

The waters of Baird Bay (West Coast).

Port MacDonnell

Those waters of the ocean bounded as follows:

All the waters below high water mark within a radius of 0.55 of a nautical mile from the seaward lead light at the shoreward end of the Port MacDonnell jetty, position latitude 38° 03.4' south and longitude 140° 42.2' east (excluding the waters referred to in subclause (2)).

(2) The taking of fish—

- (a) by any unlicensed person by using any device other than a rod and line, hand line or hand net; or
- (b) by any licensed person by using any device other than a rod and line, hand line or hand net,

in the following waters:

Port MacDonnell (Special Area)

The waters of Port MacDonnell bounded as follows:

Commencing at a point at high water mark on the shore at the western edge of Hammond's Drain, latitude 38° 03' 20" south, longitude 140° 42' 32" east, then in a direction of 170°T towards the navigation light on the seaward end of the Port MacDonnell breakwater, for a distance of 300 metres, then in a generally easterly direction, remaining 300 metres from the high water mark on the shore, to the point of intersection with the 0.55 nautical mile radial line described in subclause (1), then following that line to high water mark on the shore, then along the high water mark in a generally westerly direction to the point of commencement.

39(1) The taking of fish by any person in the waters described in subclause (2)—

- (a) other than the taking of short finned eel (*Anguilla australis occidentalis*) using a fyke net that complies with the following requirements:
 - (i) the net must not be more than 1.5 metres in height, length and width; and
 - (ii) none of the entrance funnels of the net may exceed 6 centimetres at their narrowest part; and
 - (iii) if made of mesh material, (whether rigid or flexible), the mesh must be such as to allow a cylindrical rod 0.9 centimetres in diameter to be passed freely through it; and
 - (iv) if made of fish netting, the mesh of the netting must be of at least 3 centimetres; and
 - (b) other than the taking of any fish (other than short finned eel) by a rod and line, hand line, hand net or yabbie pot.
- (2) The waters referred to are as follows:
- Counties of MacDonnell, Robe and Grey*
- The inland waters within the counties of MacDonnell, Robe and Grey bounded by the geodesic commencing at a point on high water mark on the seashore on the northern boundary of the county of MacDonnell, then along that boundary to the Victorian Border, then around the corner to the southern boundary of the county of Grey on the seashore, then following high water mark to the point of commencement, but excluding the waters of Lake George.
- 40 The taking of fish (other than by the power hauling method of fishing) by any person in coastal waters by using a hauling net or seine net that—
- (a) exceeds 600 metres in length; or
 - (b) exceeds 10 metres in depth; or
 - (c) has a mesh size of less than 30 millimetres; or
 - (d) has attached to it a rope or ropes the length or combined lengths of which exceed 100 metres.
- 41 The taking of fish by a licensed person in coastal waters by using a mesh net or gill net that—
- (a) exceeds 600 metres in length; or
 - (b) exceeds 5 metres in depth; or
 - (c) has a mesh of less than 5 centimetres; or
 - (d) has attached to it a rope or ropes, other than floating rope; or
 - (e) has, except where such net is used as a swinger net, attached to it a rope or ropes the length or combined length of which exceeds 100 metres.
- 42 The taking of fish by any person in the waters of the State by using a large mesh net that exceeds 600 metres in length.
- 43 The taking of fish by any person by using a large mesh net that has been left in the waters of the State for any period comprised of more than 4 consecutive hours.

- 44 The taking of fish in the waters of the State by any person by using, at any 1 time, more than 5 large mesh nets.
- 45 The taking of fish by any person in the waters of Gulf St. Vincent or Spencer Gulf by using a large mesh net that has not been shot out in a straight line.
- 46(1) The taking of fish (other than prawn) and other than by the power hauling method of fishing) by any person in any of the following waters by the use of a net being towed behind a moving boat or by the hauling of a net through the water by means other than by hand from a boat:
- (a) those waters of Spencer Gulf of a depth of less than 40 metres;
 - (b) all those waters of Gulf St. Vincent north of the geodesic joining Troubridge Point, Yorke Peninsula and Cape Jervis, Fleurieu Peninsula;
 - (c) all those waters of the State of a depth of less than 20 metres.
- 47 The taking of fish by any person by using a pipeline through which water is pumped from any waters of the State.
- 48 The taking of fish in the waters of the State by any person by—
- (a) the explosion of any substance (other than by use of a spear gun); or
 - (b) the use of any anaesthetic, narcotic or poisonous substance.
- 49 The taking of fish by any person by using a fish net that has been fixed, set or staked across any bay, inlet, river, creek or tidal water or the greater part of any bay, inlet, river, creek or tidal water.
- 50 The taking of fish by any person by fixing or placing any stake, log, stone or other article or thing, other than a fish net, across—
- (a) the whole or any part of the mouth of any waters; or
 - (b) the whole or any part of any channel, creek, stream, river or tidal waters,
- in such a manner as is likely to impair the free passage of fish in those waters.
- 51 The taking of salmon (*Arripis truttaceus*) by any person in the waters of the State by using a purse seine net that—
- (a) exceeds 900 metres in length; or
 - (b) exceeds 13 metres in depth; or
 - (c) has a mesh size of less than 50 millimetres.
- 53 The taking of fish by any person in the waters of the State by using a shrimp trap that—
- (a) exceeds 400 millimetres at its greatest dimension; or
 - (b) exceeds 200 millimetres in height; or
 - (c) has a net forming part of the trap which has a mesh of less than 5 millimetres; or
 - (d) has an entrance or opening the diameter of which exceeds 30 millimetres.
- 54(1) The taking of fish by a licensed person by means of a fish trap unless—
- (a) the fish trap has a buoy attached that complies with these regulations and is marked with a black stripe 5 centimetres in width visible above the water; and

- (b) the fish trap does not exceed 2.0 metres at its greatest dimension; and
 - (c) each opening in the fish trap is either—
 - (i) rectangular; or
 - (ii) the shape of a funnel; and
 - (d) in the case of an opening in the fish trap that is rectangular, the opening—
 - (i) is not greater in size than 20 centimetres x 6 centimetres; and
 - (ii) has a rigid frame of steel rod not less than 1.25 centimetres in diameter; and
 - (e) in the case of an opening in a fish trap that is the shape of a funnel, the inner opening of the funnel is—
 - (i) rectangular; and
 - (ii) not greater in size than 20 centimetres x 6 centimetres; and
 - (iii) has a rigid frame of steel rod not less than 1.25 centimetres in diameter.
- 55 The taking of ocean leather jacket (*Nelusetta ayraudi*) in waters deeper than 60 metres by a licensed person by means of a fish trap unless—
- (a) the trap complies with the following requirements:
 - (i) the trap must not, when calculated by measuring its outside dimensions, exceed 1 cubic metre in volume;
 - (ii) the trap must be cylindrical, rectangular or square in shape;
 - (iii) the trap must—
 - (A) have not more than 2 openings each not exceeding 30 centimetres in length and 8 centimetres in width; and
 - (B) be constructed of rigid steel rod not less than 0.8 centimetres in diameter; and
 - (b) a buoy that—
 - (i) complies with these regulations; and
 - (ii) is marked with a black stripe that is 5 centimetres wide and visible above the water,is attached to the trap.
- 56 (1) The taking of prawn by a licensed person in coastal waters by using a prawn trawl net that—
- (a) has a mesh size of less than 45 millimetres; or
 - (b) has a headline the length of which exceeds 40 metres.
- (2) For the purpose of this clause, the mesh must be measured from the middle of the knot and the length of the headline includes the length of the headline of any other net combined with it if used at the same time.

- 57(1) The taking of fish by any person pursuant to a licence under the *Scheme of Management (Prawn Fisheries) Regulations 1991* in Gulf St. Vincent (as defined in those regulations) by use of—
- (a) a trawl net the length of the headline of which exceeds 29.26 metres; or
 - (b) more than 1 trawl net at any 1 time where the combined length of the headlines of all the nets exceeds 29.26 metres; or
 - (c) —
 - (i) a boat that has—
 - (A) an overall length exceeding 22 metres; and
 - (B) a main engine the continuous brake power rating of which exceeds 272 kW; and
 - (ii) a trawl net or trawl nets other than as a single or double rig.
- (2) The taking of fish by any person pursuant to a licence under the *Scheme of Management (Prawn Fisheries) Regulations 1991* in Gulf St. Vincent (within the meaning of those regulations) by use of—
- (a) a boat that has—
 - (i) an overall length not exceeding 15.2 metres; and
 - (ii) a main engine the continuous brake horse power rating does not exceed 224 kW; and
 - (b) —
 - (i) a trawl net the length of the headline of which exceeds 27.43 metres; or
 - (ii) more than 1 trawl net at any 1 time where the combined length of the headlines of all the nets exceeds 27.43 metres; or
 - (iii) a trawl net or trawl nets other than as a single, double or triple rig.
- 58 The taking of fish by any person pursuant to a licence under the *Scheme of Management (Prawn Fisheries) Regulations 1991* in Spencer Gulf (as defined in those regulations) by use of—
- (a) a boat that has—
 - (i) an overall length exceeding 22 metres; and
 - (ii) a main engine the continuous brake power of which exceeds 272 kW; or
 - (b) a trawl net the length of the headline of which exceeds 29.26 metres; or
 - (c) more than 1 trawl net at any 1 time where the combined length of the headlines of all the nets exceeds 29.26 metres; or
 - (d) a trawl net or trawl nets other than as a single or double rig.
- 59 The taking of fish by any person pursuant to a licence under the *Scheme of Management Prawn (Fisheries) Regulations 1991* in West Coast Waters (as defined in those regulations) by use of—
- (a) a boat that has—

- (i) an overall length exceeding 22 metres; and
 - (ii) a main engine the continuous brake power rating of which exceeds 272 kW; or
 - (b) a trawl net the length of the headline of which exceeds 29.26 metres; or
 - (c) more than 1 trawl net at any 1 time where the combined length of the headlines of all the nets exceeds 29.26 metres; or
 - (d) a trawl net or trawl nets other than as a single or double rig.
- 60 The taking of undersize fish by any person in the waters of the State.
- 61 The taking in any 1 day by a licensed person of more than 50 razor fish (*Pinna bicolor*) in the waters of the State.
- 62 The taking of razor fish (*Pinna bicolor*) by a person during the months of January, February, October, November and December in waters bounded by an imaginary line commencing at high water mark on the western shoreline of Spencer Gulf position latitude 32° 41.5' south, longitude 137° 45.2' east, then due east to Beacon No. 8, then generally northerly following a line which is drawn through Beacons No. 9, 13, 20, 19, 21, 23 to Beacon No. 28 then due west to high water mark on the shore at Curlew Point at position latitude 32° 32.6' south, longitude 137° 45.9' east, then generally southerly along high water mark back to the point of commencement.
- 63 The taking of molluscs by any person in the waters known as West Lakes and foreshore areas (including reserves for public use) adjacent to those waters.
- 64 The taking of cockle (*Katelysia* spp.) by a licensed person for the purposes of trade or business from waters—
- (a) within 50 metres of the shore along the Coffin Bay township from Quinlan Point, position latitude 34° 37'S, longitude 135° 27'E, to the point where the underground cable enters the water, position latitude 34° 37.2'S, longitude 135° 28.6'E; or
 - (b) within 50 metres of the shore of Goat Island.
- 65 The taking by any person of a benthic marine organism in the area of a rocky reef and its waters—
- (a) adjacent to the State; or
 - (b) adjacent to an off-shore island forming part of the State,
- being the area that extends from the high water mark seawards to a depth of waters of 2 metres.
- 66 (1) The taking by an unlicensed person, in the waters specified in column 1 of the table below, of fish of the class specified in column 2 from a boat from which the quantity specified in column 3 has already been taken by unlicensed persons on the same day.

Fisheries (General) Regulations 2000—1.7.2006 to 21.3.2007

Schedule 1—Classes of fishing activities prescribed for purposes of section 41 of Act

- (2) The taking by an unlicensed person in any 1 day, in the waters specified in column 1 of the table below, of more fish of the class specified in column 2 than the quantity specified in column 4.

Table—Recreational non-charter boat fishing daily boat and bag limits

Column 1 Waters	Column 2 Species of fish	Column 3 Maximum quantity per boat per day	Column 4 Maximum quantity per person per day
	Bream		
The waters of the State	Bream (<i>Acanthopagrus</i> spp.)	30	10
	Calamary and cuttlefish		
The waters of the State	Calamary (<i>Sepioteuthis australis</i>)	45	15
The waters of the State	Cuttlefish (<i>Sepia</i> spp.)	45	15
	Callop		
The waters of the State	Callop (golden perch (<i>Macquaria ambigua</i>))	15	5
The waters of the State	Callop (Lake Eyre perch (<i>Macquaria n.sp</i>))	15	5
	Catfish		
The waters of the Cooper Creek or the Diamantina Creek (including the anabranches and lakes of those creeks)	Large catfish (Family Plotosidae)	6	2
The waters of the Cooper Creek or the Diamantina Creek (including the anabranches and lakes of those creeks)	Small catfish (Family Plotosidae)	30	10
	Crab		
The waters of the State	Blue crab (<i>Portunus pelagicus</i>)	120	40
The waters of the State	Sand crab (<i>Ovalipes australiensis</i>)	120	40
	Flathead		
The waters of the State	Flathead (<i>Platycephalus</i> spp.)	30	10
	Flounder		
The waters of the State	Flounder (Family Bothidae or Pleuronectidae)	60	20
	Garfish		
The waters of the State	Garfish (<i>Hyporhamphus melanochir</i>)	180	60

1.7.2006 to 21.3.2007—Fisheries (General) Regulations 2000
Classes of fishing activities prescribed for purposes of section 41 of Act—Schedule 1

Column 1 Waters	Column 2 Species of fish	Column 3 Maximum quantity per boat per day	Column 4 Maximum quantity per person per day
	Groper		
The waters of the State (other than those waters specified in regulation 6(d))	Blue groper (<i>Achoerodus gouldii</i>)	6	2
	Grunter		
The waters of the State other than the waters of the Cooper Creek or the Diamantina Creek (and the anabranches and lakes of those creeks)	Grunter (Family Teraponidae)	15	5
	Morwong		
The waters of the State	Blue morwong (<i>Nemadactylus valenciennesi</i>)	15	5
	Mullet		
The waters of the State	Mullet (Family Mugilidae)	180	60
	Mulloway		
The waters of the State other than Coorong (area 1) or Coorong (area 2)	Mulloway (<i>Argyrosomus hololepidotus</i>)	6	2
	Nannygai, red snapper and swallowtail		
The waters of the State	Nannygai (<i>Centroberyx affinis</i>)	30	10
The waters of the State	Red snapper (<i>Centroberyx gerrardi</i>)	30	10
The waters of the State	Swallowtail (<i>Centroberyx lineatus</i>)	30	10
	Razorfish		
The waters of the State	Razorfish (<i>Pinna bicolor</i>)	150	50
	Salmon		
The waters of the State	Large salmon (<i>Arripis truttaceus</i>)	30	10
The waters of the State	Small salmon (<i>Arripis truttaceus</i>)	60	20
	Samson fish and yellowtail kingfish		
The waters of the State	Samson fish (<i>Seriola hippos</i>)	6	2
The waters of the State	Yellowtail kingfish (<i>Seriola grandis</i>)	6	2

Fisheries (General) Regulations 2000—1.7.2006 to 21.3.2007

Schedule 1—Classes of fishing activities prescribed for purposes of section 41 of Act

Column 1 Waters	Column 2 Species of fish	Column 3 Maximum quantity per boat per day	Column 4 Maximum quantity per person per day
	Scallop		
The waters of the State	Scallop (Family Pectinidae)	300	100
	Shark		
The waters of the State	Gummy shark (<i>Mustelus antarcticus</i>)	6	2
The waters of the State	School shark (<i>Galeorhinus galeus</i>)	6	2
	Snapper		
The waters of the State	Large snapper (<i>Pagrus auratus</i>)	6	2
The waters of Gulf St. Vincent, Investigator Strait and Backstairs Passage	Small snapper (<i>Pagrus auratus</i>)	15	5
The waters of the State other than the waters of Gulf St. Vincent, Investigator Strait and Backstairs Passage	Small snapper (<i>Pagrus auratus</i>)	30	10
	Snook		
The waters of the State	Snook (<i>Sphyaena novaehollandiae</i>)	60	20
	Sweep		
The waters of the State	Sweep (Genus Scorpis)	60	20
	Tommy ruff		
The waters of the State	Tommy ruff (<i>Arripis georgianus</i>)	180	60
	Trevally		
The waters of the State	Silver trevally (<i>Pseudocaranx dentex</i>)	60	20
	Tuna		
The waters of the State	Southern bluefin tuna (<i>Thunnus maccoyii</i>)	6	2
The waters of the State	Yellowfin tuna (<i>Thunnus albacares</i>)	6	2
	Whiting		
The waters of the State	King George whiting (<i>Sillaginodes punctatus</i>)	36	12
The waters of the State	Yellowfin whiting (<i>Sillago schomburgkii</i>)	60	20

- (3) The taking by an unlicensed person, in the waters of the State—
- (a) of calamary or cuttlefish from a boat from which 45 calamary and cuttlefish in combination have been taken by unlicensed persons on the same day; or
 - (b) of callop (being callop (golden perch) or callop (Lake Eyre perch) from a boat from which 15 callop (being a combination of callop (golden perch) and callop (Lake Eyre perch) have already been taken by unlicensed persons on the same day; or
 - (c) of crab (being blue crab or sand crab) from a boat from which 120 crab (being a combination of blue crab and sand crab) have already been taken by unlicensed persons on the same day; or
 - (d) of shark (being gummy shark or school shark) from a boat from which 6 shark (being a combination of gummy shark and school shark) have already been taken by unlicensed persons on the same day; or
 - (e) of tuna (being (southern bluefin tuna or yellowfin tuna) from a boat from which 6 tuna (being a combination of southern bluefin tuna and yellowfin tuna) have already been taken by unlicensed persons on the same day.
- (4) The taking by an unlicensed person, in the waters of the State—
- (a) of calamary or cuttlefish if the person has already taken 15 calamary and cuttlefish in combination on the same day; or
 - (b) of callop (being callop (golden perch) or callop (Lake Eyre perch)) if the person has already taken 5 callop (being a combination of callop (golden perch) and callop (Lake Eyre perch)) on the same day; or
 - (c) of crab (being blue crab or sand crab) if the person has already taken 40 crab (being a combination of blue crab and sand crab) on the same day; or
 - (d) of shark (being gummy shark or school shark) if the person has already taken 1 gummy shark and 1 school shark on the same day; or
 - (e) of tuna (being southern bluefin tuna or yellowfin tuna) if the person has already taken 1 southern bluefin tuna and 1 yellowfin tuna on the same day.
- (5) Subclauses (1) and (3) do not apply in relation to fish taken by unlicensed persons from a registered boat being used pursuant to a licence in respect of the Charter Boat Fishery.
- 67(1) The taking by an unlicensed person, in the waters specified in column 1 of the table below, of fish of the class specified in column 2 from a boat from which the quantity specified in column 3 has already been taken by unlicensed persons on the same day.

- (2) The taking by an unlicensed person in any 1 day, in the waters specified in column 1 of the table below, of more fish of the class specified in column 2 than the quantity specified in column 4.

Table—Recreational non-charter boat fishing daily boat and bag limits

Column 1 Waters	Column 2 Species of fish	Column 3 Maximum quantity per boat per day	Column 4 Maximum quantity per person per day
	Abalone (<i>Haliotis</i> spp.)	10	5
	Murray cod Murray cod (<i>Maccullochella peelii</i>)	6	2
The waters of the State			
	Rock lobster Rock lobster (<i>Jasus edwardsii</i>)	8	4
The Northern Zone or the Southern Zone			

- (3) Subclause (1) does not apply in relation to fish taken by unlicensed persons from a registered boat being used pursuant to a licence in respect of the Charter Boat Fishery.

- 68 The taking by an unlicensed person in any 1 day, in the waters specified in column 1 of the table below, of more fish of the class specified in column 2 than the quantity specified in column 3.

Table—Recreational fishing—daily bag limits

Column 1 Waters	Column 2 Species of fish	Column 3 Maximum quantity per person per day
	Cockle	
The waters of the State	Goolwa cockle (<i>Donax deltoides</i>)	600
The waters of the State	Mud cockle (<i>Katelysia</i> spp.)	300
	Cowrie	
The waters of the State	Black cowrie (<i>Zoila friendii thersites</i>)	1
	Mulloway	
The waters of Coorong (area 1) or Coorong (area 2)	Large mulloway (<i>Argyrosomus hololepidotus</i>)	2
The waters of Coorong (area 1) or Coorong (area 2)	Small mulloway (<i>Argyrosomus hololepidotus</i>)	10
	South-east crayfish	
The waters of the State	South-east crayfish (<i>Euastacus bispinosa</i>)	5
	Yabby	
The waters of the State	Yabby (<i>Cherax destructor</i>)	200

- 69 (1) The taking by an unlicensed person, in the waters specified in column 1 of the table below, of fish of the class specified in column 2, from a boat carrying more than 3 but not more than 6 passengers from which the quantity specified in column 3 has already been taken by unlicensed persons on the same day.
- (2) The taking by an unlicensed person, in the waters specified in column 1 of the table below, of fish of the class specified in column 2, from a boat carrying more than 3 but not more than 6 passengers from which a quantity equal to 3 times the quantity specified in column 3 has already been taken by unlicensed persons during the same trip (being a trip lasting more than 3 days).

Table—Recreational charter boat fishing daily bag limits

Column 1 Waters	Column 2 Species of fish	Column 3 Maximum quantity per boat per day (charter boat carrying more than 3 but not more than 6 passengers)
	Bream	
The waters of the State	Bream (<i>Acanthopagrus</i> spp.)	30
	Calamary and cuttlefish	
The waters of the State	Calamary (<i>Sepioteuthis australis</i>)	45
The waters of the State	Cuttlefish (<i>Sepia</i> spp)	45
	Crab	
The waters of the State	Blue crab (<i>Portunus pelagicus</i>)	120
The waters of the State	Sand crab (<i>Ovalipes australiensis</i>)	120
	Flathead	
The waters of the State	Flathead (<i>Platycephalus</i> spp.)	30
	Flounder	
The waters of the State	Flounder (Family Bothidae or Pleuronectidae)	60
	Garfish	
The waters of the State	Garfish (<i>Hyporhamphus melanochir</i>)	180
	Groper	
The waters of the State (other than those waters specified in regulation 6(d))	Blue groper (<i>Achoerodus gouldii</i>)	6
	Morwong	
The waters of the State	Blue morwong (<i>Nemadactylus valenciennesi</i>)	15
	Mullet	
The waters of the State	Mullet (Family Mugilidae)	180

Fisheries (General) Regulations 2000—1.7.2006 to 21.3.2007

Schedule 1—Classes of fishing activities prescribed for purposes of section 41 of Act

Column 1 Waters	Column 2 Species of fish	Column 3 Maximum quantity per boat per day (charter boat carrying more than 3 but not more than 6 passengers)
	Mulloway	
The waters of the State other than Coorong (area 1) or Coorong (area 2)	Large mulloway (<i>Argyrosomus hololepidotus</i>)	6
	Nannygai and swallowtail	
The waters of the State	Nannygai (<i>Centroberyx australis</i>)	30
The waters of the State	Swallowtail (<i>Centroberyx lineatus</i>)	30
	Razorfish	
The waters of the State	Razorfish (<i>Pinna bicolor</i>)	150
	Salmon	
The waters of the State	Large salmon (<i>Arripis truttaceus</i>)	30
The waters of the State	Small salmon (<i>Arripis truttaceus</i>)	60
	Samson fish and yellowtail kingfish	
The waters of the State	Samson fish (<i>Seriola hippos</i>)	6
The waters of the State	Yellowtail kingfish (<i>Seriola grandis</i>)	6
	Scallop	
The waters of the State	Scallop (Family Pectinidae)	300
	Shark	
The waters of the State	Gummy shark (<i>Mustelus antarcticus</i>)	6
The waters of the State	School shark (<i>Galeorhinus galeus</i>)	6
	Snook	
The waters of the State	Snook (<i>Sphyaena novaehollandiae</i>)	60
	Sweep	
The waters of the State	Sweep (Genus Scorpis)	60
	Tommy ruff	
The waters of the State	Tommy ruff (<i>Arripis georgianus</i>)	180
	Trevally	
The waters of the State	Silver trevally (<i>Pseudocaranx dentex</i>)	60
	Whiting	
The waters of the State	School whiting (<i>Sillago flindersi</i>)	60
The waters of the State	Yellowfin whiting (<i>Sillago schomburgkii</i>)	60

- (3) This clause applies only in relation to fish taken by unlicensed persons from a registered boat being used pursuant to a licence in respect of the Charter Boat Fishery.
- 70(1) The taking by an unlicensed person in any 1 day, in the waters specified in column 1 of the table below, from a boat carrying not more than 3 passengers, of more fish of the class specified in column 2 than the quantity specified in column 3.
- (2) The taking by an unlicensed person, in the waters specified in column 1 of the table below, of fish of the class specified in column 2, from a boat carrying not more than 3 passengers from which a quantity equal to 3 times the quantity specified in column 3 has already been taken by unlicensed persons during the same trip (being a trip lasting more than 3 days).
- (3) The taking by an unlicensed person in any 1 day, in the waters specified in column 1 of the table below, from a boat carrying more than 6 passengers, of more fish of the class specified in column 2 than the quantity specified in column 4.
- (4) The taking by an unlicensed person, in the waters specified in column 1 of the table below, of fish of the class specified in column 2, from a boat carrying more than 6 passengers from which a quantity equal to 3 times the quantity specified in column 4 has already been taken by unlicensed persons during the same trip (being a trip lasting more than 3 days).

Table—Recreational charter boat fishing daily bag limits

Column 1 Waters	Column 2 Species of fish	Column 3 Maximum quantity per person per boat per day (charter boat carrying not more than 3 passengers)	Column 4 Maximum quantity per person per boat per day (charter boat carrying more than 6 passengers)
Bream			
The waters of the State	Bream (<i>Acanthopagrus</i> spp.)	10	5
Calamary and cuttlefish			
The waters of the State	Calamary (<i>Sepioteuthis australis</i>)	15	8
The waters of the State	Cuttlefish (<i>Sepia</i> spp.)	15	8
Crab			
The waters of the State	Blue crab (<i>Portunus pelagicus</i>)	40	20
The waters of the State	Sand crab (<i>Ovalipes australiensis</i>)	40	20
Flathead			
The waters of the State	Flathead (<i>Platycephalus</i> spp.)	10	5
Flounder			
The waters of the State	Flounder (Family Bothidae or Pleuronectidae)	20	10

Fisheries (General) Regulations 2000—1.7.2006 to 21.3.2007

Schedule 1—Classes of fishing activities prescribed for purposes of section 41 of Act

Column 1 Waters	Column 2 Species of fish	Column 3 Maximum quantity per person per boat per day (charter boat carrying not more than 3 passengers)	Column 4 Maximum quantity per person per boat per day (charter boat carrying more than 6 passengers)
	Garfish		
The waters of the State	Garfish (<i>Hyporhamphus melanochir</i>)	60	30
	Groper		
The waters of the State (other than those waters specified in regulation 6(d))	Blue groper (<i>Achoerodus gouldii</i>)	2	1
	Morwong		
The waters of the State	Blue morwong (<i>Nemadactylus valenciennesi</i>)	5	3
	Mullet		
The waters of the State	Mullet (Family Mugilidae)	60	30
	Mulloway		
The waters of the State other than Coorong (area 1) or Coorong (area 2)	Large mulloway (<i>Argyrosomus hololepidotus</i>)	2	1
The waters of the State	Mud cockle (<i>Katelysia</i> spp.)	300	150
	Nannygai and swallowtail		
The waters of the State	Nannygai (<i>Centroberyx australis</i>)	10	5
The waters of the State	Swallowtail (<i>Centroberyx lineatus</i>)	10	5
	Razorfish		
The waters of the State	Razorfish (<i>Pinna bicolor</i>)	50	25
	Salmon		
The waters of the State	Large salmon (<i>Arripis truttaceus</i>)	10	5
The waters of the State	Small salmon (<i>Arripis truttaceus</i>)	20	10
	Samson fish and yellowtail kingfish		
The waters of the State	Samson fish (<i>Seriola hippos</i>)	2	1

Column 1 Waters	Column 2 Species of fish	Column 3 Maximum quantity per person per boat per day (charter boat carrying not more than 3 passengers)	Column 4 Maximum quantity per person per boat per day (charter boat carrying more than 6 passengers)
The waters of the State	Yellowtail kingfish (<i>Seriola grandis</i>)	2	1
	Scallop		
The waters of the State	Scallop (Family Pectinidae)	100	50
	Snook		
The waters of the State	Snook (<i>Sphyræna novaehollandiae</i>)	20	10
	Sweep		
The waters of the State	Sweep (Genus Scorpis)	20	10
	Tommy ruff		
The waters of the State	Tommy ruff (<i>Arripis georgianus</i>)	60	30
	Trevally		
The waters of the State	Silver trevally (<i>Pseudocaranx dentex</i>)	20	10
	Whiting		
The waters of the State	School whiting (<i>Sillago flindersi</i>)	20	10
The waters of the State	Yellowfin whiting (<i>Sillago schomburgkii</i>)	20	10

- (5) The taking by an unlicensed person, in the waters of the State—
- (a) of calamary or cuttlefish from a boat carrying not more than 3 passengers—
 - (i) from which the person has already taken 15 calamary and cuttlefish in combination on the same day; or
 - (ii) from which 45 calamary and cuttlefish in combination have already been taken by unlicensed persons during the same trip (being a trip lasting more than 3 days); or
 - (b) of calamary or cuttlefish from a boat carrying more than 6 passengers—
 - (i) from which the person has already taken 8 calamary and cuttlefish in combination on the same day; or
 - (ii) from which 24 calamary and cuttlefish in combination have already been taken by unlicensed persons during the same trip (being a trip lasting more than 3 days).
- (6) The taking by an unlicensed person, in the waters of the State—
- (a) of crab (being blue crab or sand crab) from a boat carrying not more than 3 passengers—

- (i) from which the person has already taken 40 crab (being a combination of blue crab and sand crab) on the same day; or
- (ii) from which 120 crab (being a combination of blue crab and sand crab) have already been taken by unlicensed persons during the same trip (being a trip lasting more than 3 days); or
- (b) of crab (being blue crab or sand crab) from a boat carrying more than 6 passengers—
 - (i) from which the person has already taken 20 crab (being a combination of blue crab and sand crab) on the same day; or
 - (ii) from which 60 crab (being a combination of blue crab and sand crab) have already been taken by unlicensed persons during the same trip (being a trip lasting more than 3 days).
- (7) This clause applies only in relation to fish taken by unlicensed persons from a registered boat being used pursuant to a licence in respect of the Charter Boat Fishery.
- 71 (1) The taking by an unlicensed person in any 1 day, in the waters specified in column 1 of the table below, from a boat carrying not more than 3 passengers, of more fish of the class specified in column 2 than the quantity specified in column 3.
- (2) The taking by an unlicensed person, in the waters specified in column 1 of the table below, of fish of the class specified in column 2, from a boat carrying not more than 3 passengers from which a quantity equal to 3 times the quantity specified in column 3 has already been taken by unlicensed persons during the same trip (being a trip lasting more than 3 days).
- (3) The taking by an unlicensed person in any 1 day, in the waters specified in column 1 of the table below, from a boat carrying more than 3 passengers, of more fish of the class specified in column 2 than the quantity specified in column 4.
- (4) The taking by an unlicensed person, in the waters specified in column 1 of the table below, of fish of the class specified in column 2, from a boat carrying more than 3 passengers from which a quantity equal to 3 times the quantity specified in column 4 has already been taken by unlicensed persons during the same trip (being a trip lasting more than 3 days).

Table—Recreational charter boat fishing daily bag limits

Column 1 Waters	Column 2 Species of fish	Column 3 Maximum quantity per person per boat per day (charter boat carrying not more than 3 passengers)	Column 4 Maximum quantity per person per boat per day (charter boat carrying more than 3 passengers)
	Abalone		
The waters of the State	Abalone (<i>Haliotis</i> spp.)	5	3
	Cockle		
The waters of the State	Goolwa cockle (<i>Donax deltoides</i>)	600	300

Column 1 Waters	Column 2 Species of fish	Column 3 Maximum quantity per person per boat per day (charter boat carrying not more than 3 passengers)	Column 4 Maximum quantity per person per boat per day (charter boat carrying more than 3 passengers)
The waters of the State	Mud cockle (<i>Katelysia</i> spp.)	300	150
	Crab		
The waters of the State	Giant crab (<i>Pseudocarcinus gigas</i>)	2	2
	Rock lobster		
The waters of the State	Rock lobster (<i>Jasus edwardsii</i>)	4	2
	Whiting		
The waters of the State	King George whiting (<i>Sillaginodes punctatus</i>)	12	10

- (5) This clause applies only in relation to fish taken by unlicensed persons from a registered boat being used pursuant to a licence in respect of the Charter Boat Fishery.
- 72 (1) The taking by an unlicensed person, in the waters specified in column 1 of the table below, of fish of a class specified in column 2, from a boat carrying more than 3 passengers from which the quantity specified in column 3 has already been taken by unlicensed persons on the same day.
- (2) The taking by an unlicensed person, in the waters specified in column 1 of the table below, of fish of the class specified in column 2 from a boat from which the quantity specified in column 3 has already been taken by unlicensed persons during the same trip (being a trip lasting more than 3 days).
- (3) The taking by an unlicensed person in any 1 day, in the waters specified in column 1 of the table below, from a boat carrying not more than 3 passengers, of more fish of the class specified in column 2 than the quantity specified in column 4.

Table—Recreational charter boat fishing daily boat and bag limits

Column 1 Waters	Column 2 Species of fish	Column 3 Maximum quantity per boat per day (charter boat carrying more than 3 passengers)	Column 4 Maximum quantity per person per boat per day (charter boat carrying not more than 3 passengers)
	Barracouta		
The waters of the State	Barracouta (<i>Thyrssites atun</i>)	30	10
	Bight redfish		
The waters of the State	Bight redfish (<i>Centroberyx garrardi</i>)	30	10

Fisheries (General) Regulations 2000—1.7.2006 to 21.3.2007

Schedule 1—Classes of fishing activities prescribed for purposes of section 41 of Act

Column 1 Waters	Column 2 Species of fish	Column 3 Maximum quantity per boat per day (charter boat carrying more than 3 passengers)	Column 4 Maximum quantity per person per boat per day (charter boat carrying not more than 3 passengers)
	Gemfish		
The waters of the State	Gemfish (<i>Rexea solandri</i>)	30	10
	Ling		
The waters of the State	Ling (<i>Genypterus tigerinus</i>)	18	3
	Morwong		
The waters of the State	Jackass morwong (<i>Nemadactylus macropterus</i>)	30	10
	Shark		
The waters of the State	Gummy shark (<i>Mustelus antarcticus</i>)	6	2
The waters of the State	School shark (<i>Galeorhinus galeus</i>)	6	2
	Tuna		
The waters of the State	Albacore (<i>Thunnus alalunga</i>)	6	2
The waters of the State	Southern bluefin tuna (<i>Thunnus maccoyii</i>)	6	2
The waters of the State	Yellowfin tuna (<i>Thunnus albacares</i>)	6	2
	Warehou		
The waters of the State	Blue warehou (<i>Seriolella brama</i>)	30	10
The waters of the State	Spotted warehou (<i>Seriolella punctata</i>)	30	10

(4) The taking by an unlicensed person, in the waters of the State—

- (a) of shark (being gummy shark or school shark) from a boat carrying more than 3 passengers from which 6 shark (being a combination of gummy shark and school shark) have already been taken by unlicensed persons on the same day; or
- (b) of shark (being gummy shark or school shark) from a boat from which 6 shark (being a combination of gummy shark and school shark) have already been taken by unlicensed persons on the same trip (being a trip lasting more than 3 days); or

- (c) of shark (being gummy shark or school shark) from a boat carrying not more than 3 passengers from which the person has already taken 2 shark (being a combination of gummy shark and school shark) on the same day.
- (5) The taking by an unlicensed person, in the waters of the State—
 - (a) of tuna (being southern bluefin tuna or yellowfin tuna) from a boat carrying more than 3 passengers from which 6 tuna (being a combination of southern bluefin tuna and yellowfin tuna) have already been taken by unlicensed persons on the same day; or
 - (b) of tuna (being southern bluefin tuna or yellowfin tuna) from a boat from which 6 tuna (being a combination of southern bluefin tuna and yellowfin tuna) have already been taken by unlicensed persons on the same trip (being a trip lasting more than 3 days); or
 - (c) of tuna (being southern bluefin tuna or yellowfin tuna) from a boat carrying not more than 3 passengers from which the person has already taken 2 tuna (being a combination of southern bluefin tuna and yellowfin tuna) on the same day.
- (6) This clause applies only in relation to fish taken by unlicensed persons from a registered boat being used pursuant to a licence in respect of the Charter Boat Fishery.
- 73 The taking in any 1 day by any person of more than 4 rock lobster by diving in the waters of the State.
- 74 The taking by any person, in the waters of the State, of blue groper that exceeds 100 centimetres in length.
- 75 The taking by any person, in the waters of the State, of Murray cod that exceeds 100 centimetres in length.
- 76 The taking by any person, in the waters of the State, of Murray cod during the period commencing on 1 September and ending on the following 31 December in any year.
- 78 The taking of blue crab (*Portunus pelagicus*) in the waters of Spencer Gulf north of the geodesic from Cape Catastrophe (latitude 34°59.4' south, longitude 136°00.1' east) to Cape Spencer (latitude 35°18.3' south, longitude 136°52.9' east) for the purpose of trade or business during the months of January or December of any year.
- 79 The taking of blue crab (*Portunus pelagicus*) for the purpose of trade or business in the waters of Gulf St. Vincent north of the geodesic from Troubridge Point (latitude 35° 10.5' south, longitude 137° 41.0' east) to Cape Jervis (latitude 35° 36.8' south, longitude 138° 05.8' east)—
 - (a) from 1 January to 15 January of any year (both days inclusive); or
 - (b) during the months of November and December of any year.
- 80 The taking of blue crab (*Portunus pelagicus*) by the holder of a fishery licence granted under the *Scheme of Management (Blue Crab Fishery) Regulations 1998* or the *Scheme of Management (Marine Scalefish Fisheries) Regulations 1991*—
 - (a) in the waters of Spencer Gulf north of latitude 32°43.66' south; or

- (b) in the waters of Spencer Gulf north westerly of an imaginary straight line from Stony Point (latitude 32°59.76' south, longitude 137°45.40' east) to latitude 33°05.20' south, longitude 137°34.0' east being the north eastern corner of the Cowled's Landing aquatic reserve and from there to the shore and then back to the point of commencement; or
- (c) in the waters of Spencer Gulf south and easterly of an imaginary straight line from latitude 33°32.8' south longitude 137°56.25' east, to a position on the eastern point of Shag Island (latitude 33°33.34' south, longitude 137°55.25' east), then to a position on the northern shore of Webling Point (latitude 33°35.33' south, longitude 137°55.53' east), including the waters of Fisherman Bay, Mundoora Bay and Mundoora Arm, and the anabranches and tributaries of those waters.
- 81 (1) The taking of blue crab (*Portunus pelagicus*) by a licensed person in the waters of the State east of longitude 135°E other than the waters of the Blue Crab Fishery.
- (2) In this clause—
- Blue Crab Fishery** has the same meaning as in the *Scheme of Management (Blue Crab Fishery) Regulations 1998*.
- 81A The taking of sand crab (*Ovalipes australiensis*) by a licensed person by using a sand crab pot in—
- (a) the waters of Coffin Bay southerly of the geodesic from Point Sir Isaac on Coffin Bay Peninsula situated at latitude 34°25.81'S, longitude 135°12.3'E, to Frenchman Bluff on Eyre Peninsula situated at latitude 34°25.14'S, longitude 135°21.4'E; or
- (b) the waters of Nepean Bay contained within the geodesic from Point Marsden situated at latitude 35°33.0'S, longitude 137°37.88'E to Kangaroo Head situated at latitude 35°43.17'S, longitude 137°54.22'E; or
- (c) the waters of Port Lincoln contained within the geodesic from Point Bolingbroke situated at latitude 34°32.51'S, longitude 136°05.33'E, to Cape Donington situated at latitude 34°43.73'S, longitude 135°59.63'E; or
- (d) the waters of Streaky Bay contained within the geodesic from Point Brown situated at latitude 32°32.58'S, longitude 133°50.83'E to Cape Bauer situated at latitude 32°43.37'S, longitude 134°03.42'E.
- 82 The taking of prawn by any person in the following waters:
- Waters less than 10 metres Deep*
All waters of the ocean and the bays and gulfs of the State between meridians of longitude 129° east and 140° 58' 00" east of a depth of less than 10 metres at low water mark.
- 83 The setting in the waters of the State for purposes other than trade or business by any person of a rock lobster pot that contains rock lobster.
- 85 The taking of rock lobster by any person in the following waters:
- (a) *Cape Jaffa*
The waters adjoining the hundred of Mount Benson, bounded as follows:

Commencing at the intersection of high water mark with the production westerly of the northern boundary of Cape Jaffa Lighthouse Reserve; then seawards along that production for 1 kilometre; generally northerly and easterly by a line distant 1 kilometre from and parallel to high water mark (to near Kings Camp), to intersect a line extending due north from the north-western corner of section 62, hundred of Mount Benson; southerly along that line to high water mark; generally westerly and southerly following high water mark to the point of commencement.

(b) *Margaret Brock Reef*

All of the waters surrounding the light on Margaret Brock Reef, position latitude 36° 57' 08" south and longitude 139° 35' 45" east, within a distance of 0.55 of a nautical mile from any part of the said light.

(c) *Rivoli Bay (including Penguin Island)*

Those waters of Rivoli Bay bounded as follows:

From high water mark at Glen Point, position latitude 37° 29' 35" south and longitude 140° 00' 50" east, then seaward in a direction of 180°T to within a distance of 100 metres of Penguin Island, then around that island at a distance of 100 metres of its extremities, then to a point at high water mark on Cape Martin, position latitude 37° 29' 58" south, and longitude 140° 00' 30" east, then along the high water mark, generally north-north-easterly, to the point of commencement.

(d) *Gleasons Landing*

All the waters of Spencer Gulf situated adjacent to the Hundred of Carribie on Yorke Peninsula, bounded as follows:

Commencing at a point (latitude 34° 57' 18" south, longitude 136° 58' 18" east) at high water mark on the shore, then extending in a generally south-westerly direction on the geodesic to a point (latitude 34° 58' 00" south, longitude 136° 57' 12" east) situated on the most westerly of 2 exposed rocks, then in a generally southerly direction on the geodesic to a point (latitude 35° 00' 54" south, longitude 136° 56' 36" east) at high water mark on the shore, then in a generally northerly direction following high water mark to the point of commencement.

- 86 The taking of rock lobster by any person from 1800 hours on 31 May to 1200 hours on 1 November of each year in the Northern Zone.
- 87 The taking of rock lobster by any person from 1800 hours on 30 April to 0600 hours on 1 October of each year in the Southern Zone.
- 88 The retrieval by any person, between sunset on any day and 30 minutes before sunrise on the following day, of a rock lobster pot placed in the Southern Zone for the purposes of taking rock lobster pursuant to a licence in respect of the Southern Zone Rock Lobster Fishery.
- 89 The taking of rock lobster by a licensed person in the Southern Zone by using a rock lobster pot that—
- (a) exceeds 150 centimetres at its widest part; or
 - (b) exceeds 120 centimetres in height; or

- (c) is not attached by a line to a floating buoy that complies with these regulations;
- (d) does not have its cove or mouth at the top; or
- (e) is not fitted with 2 rectangular escape gaps—
 - (i) that are on opposite sides; and
 - (ii) each of which is not less than 15 centimetres in length and 5.5 centimetres in depth; and
 - (iii) the highest point of each is no more than 11 centimetres above the base,

provided that for the purposes of this paragraph, a rock lobster pot need not be fitted with escape gaps if its sides are covered with mesh of a size of not less than 5 centimetres which is such that a cylindrical rod 5 centimetres in diameter is able to be passed through it freely without distorting it.

- 90(1) The taking of rock lobster by a licensed person in the Northern Zone—
- (a) by using a rock lobster pot that does not comply with subclause (2); or
 - (b) by using, at any 1 time, more than 3 rock lobster pots not fitted with 2 escape gaps that comply with subclause (3).
- (2) A rock lobster pot must—
- (a) weigh not more than 40 kilograms; and
 - (b) be not more than 61 centimetres high; and
 - (c) be not more than 122 centimetres wide at its base; and
 - (d) have its mouth at the top; and
 - (e) be attached by a line to a floating buoy that complies with these regulations.
- (3) Escape gaps must—
- (a) be as near as practicable to 180° apart; and
 - (b) be kept free of obstructions at all times; and
 - (c) be not less than 5.7 centimetres high and 28 centimetres wide; and
 - (d) be not more than 11 centimetres above the base of the pot at their highest point.
- 91 The taking of fish in the waters of the State for the purpose of bait by a licensed person by using a fish net other than a bait net.
- 93 The taking of rock lobster in the waters of the State by any person by using a fish spear, hand fish spear, spear gun or other pointed instrument.
- 94 The taking of fish in the Northern Zone pursuant to a licence in respect of the Northern Zone Rock Lobster Fishery during the period commencing at 1800 hours on 31 May in any year and ending at 1200 hours on the following 1 November by a registered master who—
- (a) is not the holder of the licence; or
 - (b) if the licence is held by a company—is not a director of the company.

- 95 The taking of bream (*Acanthopagrus* spp.) by any person between 1 September and 30 November (both days inclusive) in any year in the following waters:
- River Onkaparinga*
All those waters of the River Onkaparinga upstream from the bridge on the Main South Road at Noarlunga.
- 96 The taking of fish by any person by using a mesh net as a set net between midnight on Friday and sunset on the following Sunday in those waters between the Goolwa Barrage and the geodesic commencing at the south-easterly corner of allotment 109 section 601 Hundred of Nangkita then due south across Goolwa Channel to a point being high water mark on the shore of Sir Richard Peninsula.
- 97 The taking of fish by any person by using a mesh net that exceeds 150 metres in length, on any day of any week except Saturday and Sunday in those waters between the Goolwa Barrage and the geodesic commencing at the south-easterly corner of allotment 109 section 601 Hundred of Nangkita then due south across Goolwa Channel to a point being high water mark on the shore of Sir Richard Peninsula.
- 98 The taking of fish by any person by using a hauling net between midnight on Friday and sunset on the following Sunday in that part of those waters described in clauses 96 and 97 that is usually marked by beacons and commonly known as the "boating channel".
- 99 The taking of fish by any person by using a fish net or set line in those waters commencing at Mundoo Light then generally north-westerly to the north-east corner of section 601 Hundred of Nangkita then generally south-westerly to the south-east corner of allotment 109, section 601 Hundred of Nangkita then due south across the Goolwa Channel to a point being high water mark on the shore of Sir Richard Peninsula then generally at high water mark around the headland of Sir Richard Peninsula to the entrance of the River Murray, then south-easterly across the entrance of the River Murray to the high water mark on the shore of Younghusband Peninsula then generally around the headland of Younghusband Peninsula at high water mark to a point due south of the Mundoo Light then to the point of commencement.
- 100 The taking of fish by any person by using a mesh net that exceeds 150 metres in length, in those waters of the Coorong within the geodesic due south from the Mundoo Light to high water mark on Younghusband Peninsula and the geodesic joining Pelican Point and Gnurlung Point on Younghusband Peninsula.
- 101 The taking of fish by any person in the waters of Lakes Albert and Alexandrina by using a mesh net that—
- (a) exceeds 550 metres in length; or
 - (b) exceeds 5 metres in depth; or
 - (c) has a mesh size of less than 50 millimetres.
- 102 The taking of fish by any person in the Murray Mouth by using a long line.
- 103 The taking of fish by a licensed person in the waters of the River Murray proper by using any device other than a rod and line, hand line, yabbie pot, shrimp trap, hoop net, drum net, set line or drop net.
- 105 The taking of fish by the holder of a licence in respect of the River Fishery or an agent of such a person in the waters of the Fishery by using a device (other than a rod and line or hand line) if the device does not have attached to it a tag or buoy that—

- (a) complies with these regulations; and
 - (b) bears the number of the fishing reach in which that person may lawfully take fish pursuant to his or her licence.
- 106 The taking of fish by any person by using a mesh net as a set net in the following waters:
 - The Murray Lakes, Murray Mouth and Coorong*
 - All waters within 150 metres on each side of the barrages known as Goolwa, Mundoo, Boundary Creek, Ewe Island and Tauwitchere Barrages situated near Goolwa and erected across the River Murray and its outlets.
- 107 The taking of fish by any person by using a fish net in the waters of Lakes Albert and Alexandrina, the Murray Mouth and Coorong within 200 metres of any other fish net.
- 108 The taking of fish by any person in the waters within 150 metres of each side of each lock and weir of the River Murray proper.
- 109 The taking of Goolwa cockle (*Donax deltoides*) by any person during the months of June, July, August, September and October of each year in the waters of the State.
- 110 The taking of fish by an unlicensed person in the waters of the State by using a device (other than a device being held in the hand, a rod and line, hand line, mesh net or rock lobster pot registered under regulation 8) if the device does not have attached to it a tag that—
 - (a) complies with these regulations; and
 - (b) bears the name and address of the person using it.
- 111 The taking of fish by an unlicensed person in the waters of the State by using a mesh net registered under regulation 8 if the net does not have attached to it a tag that—
 - (a) complies with these regulations; and
 - (b) bears the name of the person in whose name the device is registered and the registration number.
- 113 The taking of fish by an unlicensed person in the waters of the State by using an unattended hoop net that does not have attached to it a floating white buoy that complies with these regulations.
- 114 The taking of fish by an unlicensed person in the waters of the State by using an unattended drop net that does not have attached to it by a line—
 - (a) a floating white buoy that complies with these regulations; and
 - (b) a tag that bears a number painted or marked on it in white, being a number that is the same as the number of drop nets attached to the line.
- 115 The taking of fish by an unlicensed person in the waters of the State by using an unattended yabbie pot or shrimp trap that does not have attached to it—
 - (a) a line with a tag that—
 - (i) complies with these regulations; and
 - (ii) bears the name and address of the person using it; and
 - (b) when set away from the shore—a white surface buoy that complies with these regulations.

- 116 The taking of rock lobster by an unlicensed person in the waters of a rock lobster fishery by using a rock lobster pot that—
- (a) exceeds 1.5 metres at its widest part; or
 - (b) exceeds 1.2 metres in height; or
 - (c) is not attached by a line to a red coloured floating buoy—
 - (i) that complies with these regulations; and
 - (ii) at the top of which is affixed the tag issued by the Director in respect of the pot on registration of the pot under regulation 8; or
 - (d) does not have its cove or mouth at the top; or
 - (e) is not fitted with 2 rectangular escape gaps—
 - (i) that are on opposite sides; and
 - (ii) each of which is not less than 15 centimetres in length and 5.5 centimetres in depth; and
 - (iii) the highest point of each is no more than 11 centimetres above the base,
- provided that for the purposes of this paragraph, a rock lobster pot need not be fitted with escape gaps if its sides are covered with mesh of not less than 5 centimetres which is such that a cylindrical rod 5 centimetres in diameter is able to be passed through it freely without distorting it.
- 118(1) The taking of fish by an unlicensed person in a fishing reach—
- (a) by trolling; or
 - (b) by using a device other than a rod and line, hand line, shrimp net, shrimp trap or yabbie pot; or
 - (c) by using a shrimp trap or yabbie pot that is not set from the shore.
- (2) The reference in subclause (1) to a fishing reach does not include a reference to the waters of the reach that are not part of the mainstream of the River Murray.
- 119 The taking of blue crabs (*Portunus pelagicus*) by a licensed person in the waters of the State by using a crab net consisting of a net—
- (a) attached at its opening to a hoop the diameter of which exceeds 150 centimetres; or
 - (b) any part of which extends from the hoop at its opening for more than 30 per cent of the diameter of the hoop; or
 - (c) having a mesh size at its base of less than 3 centimetres.
- 120 The taking of crabs of any species (Family Portunidae) by an unlicensed person in the waters of the State by using a crab net or hand net consisting of a net—
- (a) attached at its opening to a hoop the diameter of which exceeds 107 centimetres; or
 - (b) any part of which extends from the hoop at its opening for more than 92 centimetres.

- 122 The taking of fish by any person using a fish net, fish trap, hand fish spear, speargun or long line within 0.5 of a nautical mile from an artificial reef laid near any of the following:
- (a) Ardrossan, position latitude 34° 31.9'S, longitude 138° 03.7'E;
 - (b) Giles Point, position latitude 35° 02.8'S, longitude 137° 47.4'E;
 - (c) Glenelg—
 - (i) position latitude 34° 58.803'S, longitude 138° 26.359'E (the dredge); or
 - (ii) position latitude 34° 58.817'S, longitude 138° 26.384'E (the sunken barge); or
 - (iii) position latitude 34° 59'S, longitude 138° 26.6'E (the tyre module);
 - (d) Grange, position latitude 34° 55'S, longitude 138° 24'E;
 - (e) Kingscote, Kangaroo Island, position latitude 35° 41.2'S, longitude 137° 40.2'E;
 - (f) Port Augusta, position latitude 32° 40'S, longitude 137° 45.8'E;
 - (g) Port Broughton, position latitude 33° 33'S, longitude 137° 51.4'E;
 - (h) Port Germein, position latitude 33° 03.7'S, longitude 137° 59.8'E;
 - (i) Port Lincoln, position latitude 34° 41'S, longitude 135° 52.4'E;
 - (j) Port Neill, position latitude 34° 06.7'S, longitude 136° 22.6'E;
 - (k) Port Noarlunga, position latitude 35° 08.9'S, longitude 138° 26.5'E;
 - (l) Port Pirie, position latitude 33° 05.2'S, longitude 137° 54.3'E;
 - (m) Wallaroo, position latitude 33° 51.5'S, longitude 137° 34.3'E;
 - (n) Whyalla—
 - (i) position latitude 32° 58.1'S, longitude 137° 46.9'E; or
 - (ii) position latitude 32° 59.7'S, longitude 137° 47.1'E; or
 - (iii) position latitude 33° 06.3'S, longitude 137° 36.3'E.
- 122A The taking of fish by any person within 0.5 of a nautical mile from the artificial reef known as the Fleurieu Reef laid near Wirrina Cove, position latitude 35° 28.9'S, longitude 138° 09.5'E.
- 123(1) The taking of fish by any person in the waters of the State from a registered boat other than the taking of fish for the purposes of trade or business.
- (2) Subclause (1) does not apply in relation to the taking of fish by unlicensed persons for a purpose other than trade or business from a registered boat being used pursuant to a licence in respect of the Charter Boat Fishery.
- 124 The taking of fish by an unlicensed person in the waters of Lake George between one and a half hours after sunrise and one and a half hours before sunset on the same day by using a mesh net without attending the net.
- 125 The taking of fish by an unlicensed person in the waters of Lake George by using a mesh net that exceeds 75 metres in length.

- 126 The taking of scallop (Family Pectinidae) by a licensed person in the waters of the State by using a scallop dredge.
- 129 The taking of prawn by any person in the waters of the State by using the power hauling method of fishing.
- 130 The taking of fish by any person in the waters of the State by using the power hauling method of fishing if the hauling net used—
- (a) exceeds 600 metres in length; or
 - (b) has a depth exceeding 10 metres; or
 - (c) has more than 100 metres of floating rope attached to it; or
 - (d) does not have attached to the bunt end—
 - (i) a flag buoy that complies with these regulations and has a yellow flag not less than 30 centimetres by 30 centimetres displayed from the top so as to be visible at least 1 metre above the water; and
 - (ii) if used between sunset and sunrise—a flashing white light visible all around the bunt end for at least 1 nautical mile.
- 131 The taking of fish by a licensed person in the waters of the State by using a drum net that—
- (a) is not made of cotton or synthetic twine; or
 - (b) has more than 3 bands; or
 - (c) has a band the outside diameter of which exceeds 115 centimetres; or
 - (d) has a body covered with a mesh of less than 7.5 centimetres; or
 - (e) has a body which is not covered with cotton or synthetic mesh; or
 - (f) has a body that exceeds 2 metres in length; or
 - (g) has a wing that exceeds 3 metres in length; or
 - (h) has a wing covered with cotton or synthetic mesh of less than 15 centimetres; or
 - (i) has a wing not covered with cotton or synthetic mesh.
- 132 The taking of fish by a licensed person in coastal waters other than those parts of coastal waters that are between Goolwa Beach Road and Kingston Jetty by using a swinger net.
- 134 The taking of fish by an unlicensed person in the waters of the State by using a fish trap, other than a rock lobster pot registered under regulation 8, a shrimp trap or a yabbie pot.
- 135 The taking of fish by a licensed person in Coorong (area 1), Coorong (area 2) or Coorong coastal waters by using a net other than—
- (a) a small mesh monofilament net; or
 - (b) a large mesh monofilament net; or
 - (c) a small mesh multifilament hauling net; or
 - (d) a large mesh multifilament hauling net.
- 136 The taking of fish by a licensed person in Coorong (area 1) by using—

- (a) a fish net during 25 December to 7 January (both inclusive); or
 - (b) a small mesh monofilament net as a set net or a small mesh multifilament hauling net during 1 November to 31 March (both inclusive).
- 137 The taking of fish by a licensed person in Coorong (area 1), Coorong (area 2) or Coorong coastal waters by using a small mesh monofilament net—
- (a) as a set net if—
 - (i) in the case of Coorong (area 1)—
 - (A) the length of the net, or, if the net is being used by the person together with other nets, the total length of the nets exceeds 500 metres; or
 - (B) the depth of the net from the surface of the water exceeds 33 meshes of the net;
 - (ii) in the case of Coorong (area 2)—
 - (A) the length of the net exceeds 550 metres; or
 - (B) the depth of the net from the surface of the water exceeds 50 meshes of the net;
 - (iii) in the case of Coorong coastal waters—
 - (A) the length of the net exceeds 600 metres; or
 - (B) any part of the net extends more than 1 metre below the surface of the water; or
 - (b) otherwise than as a set net if—
 - (i) the depth of the net from the surface of the water exceeds 50 meshes of the net; or
 - (ii) the length of the net exceeds 100 metres; or
 - (iii) the net is not, at least once an hour, physically examined and cleared of any fish.
- 138 The taking of fish by a licensed person in Coorong (area 1) or Coorong (area 2) by using a large mesh monofilament net otherwise than as a set net.
- 139 The taking of fish by a licensed person in Coorong (area 1), Coorong (area 2) or Coorong coastal waters by using a large mesh monofilament net as a set net if—
- (a) the depth of the net exceeds 2 metres; or
 - (b) in the case of—
 - (i) Coorong (area 1)—the length of the net, or, if the net is being used by the person together with other nets, the total length of the nets, exceeds 500 metres;
 - (ii) Coorong (area 2)—the length of the net exceeds 550 metres;
 - (iii) Coorong coastal waters—the length of the net exceeds 600 metres.
- 140 The taking of fish by a licensed person in Coorong coastal waters by using a large mesh monofilament net otherwise than as a set net if—
- (a) the net has a mesh that does not exceed 120 millimetres; or

- (b) the net consists of line with a minimum breaking strain of less than 9 kilograms; or
 - (c) the net has attached to it a rope or ropes the length or total length of which exceeds 600 metres; or
 - (d) the length of the net exceeds 100 metres.
- 141 The taking of fish by a licensed person in Coorong (area 1), Coorong (area 2) or Coorong coastal waters by using a small mesh multifilament hauling net if—
- (a) the net has attached to it a rope or ropes the length or total length of which exceeds 100 metres; or
 - (b) the length of the net exceeds 400 metres.
- 142 The taking of fish by a licensed person in Coorong (area 1), Coorong (area 2) or Coorong coastal waters by using a large mesh multifilament hauling net if—
- (a) the net has attached to it a rope or ropes the length or total length of which exceeds 50 metres; or
 - (b) the length of the net exceeds—
 - (i) in the case of Coorong (area 1)—240 metres;
 - (ii) in the case of Coorong (area 2)—400 metres;
 - (iii) in the case of Coorong coastal waters—600 metres; or
 - (c) the net is hauled by the aid of mechanical power.
- 143 The taking of a species of fish referred to in Schedule 1 of the *Scheme of Management (Lakes and Coorong Fishery) Regulations 1991* by any person in the waters of the Lakes and Coorong Fishery for the purpose of trade or business by the use of—
- (a) a hauling net and a purse seine net at any 1 time; or
 - (b) more than 1 hauling net, purse seine net or swinger net or, in coastal marine waters more than 1 mesh net, at any 1 time.
- 144 The taking of a species of fish referred to in Schedule 1 of the *Scheme of Management (Lakes and Coorong Fishery) Regulations 1991* by any person in the waters of the Lakes and Coorong Fishery for the purpose of trade or business by electrofishing (other than the taking from Lakes Albert and Alexandrina of bony bream (*Nematalosa erebi*) or European carp (*Cyprinus carpio*)).
- 145(1) The taking of a native fish (except bony bream (*Nematalosa erebi*)) by a licensed person in those waters of the River Murray proper that do not include the main stream of the river.
- (2) In this clause—
- native fish*** means a fish of a species listed in Part 1 of Schedule 2 of the *Fisheries (Exotic Fish, Fish Farming and Fish Diseases) Regulations 2000*.

Schedule 2—Areas in which use of fish nets is prohibited

(Schedule 1, clause 30)

Part 1—Areas in which use of any fish net is prohibited

Fowlers Bay

The waters of Fowlers Bay within a line drawn from the point on the land known locally as First Point (latitude 32°00.72'S, longitude 132°27.50'E) to a point in the bay 200 metres northwest of the end of the Fowlers Bay jetty (latitude 31°59.32'S, longitude 132°26.22'E) and then generally westward to a point on the mainland 200 metres north of the jetty (latitude 31°59.41'S, longitude 132°27.50'E).

Denial Bay and Smoky Bay

All waters landward of a line defined by the geodesic joining Point Brown (latitude 32°32'35"S, longitude 133°50'50"E) to the southern most point of the Franklin Island group (latitude 32°28'20"S, longitude 133°37'50"E), then to Point Bell (latitude 32°12'31"S, longitude 133°07'36"E) (AGD 66).

Baird Bay West Coast

The waters of Baird Bay.

Waterloo Bay

All of the waters of Waterloo Bay, (Elliston), situated northward and eastward of the geodesic, (311° True), commencing at high water mark on the shore at Wellington Point (latitude 33°39'15" south, longitude 134°52'35" east), and terminating at high water mark on the shore at Salmon Point (latitude 33°38'40" south, longitude 134°51'50" east).

Venus Bay (West Coast)

All those waters of the eastern section of Venus Bay adjoining the hundreds of Wright and Rounsevell, county of Robinson bounded as follows:

Situating east of a straight line extending southerly across Venus Bay from the most westerly corner of section 72, hundred of Wright, to the Trigonometrical Station on Point Weyland, south of Block C, hundred of Rounsevell.

Coffin Bay

The waters of Coffin Bay southerly of the geodesic from Point Sir Isaac on Coffin Bay Peninsula situated at latitude 34°25.81'S, longitude 135°12.3'E, to Frenchman Bluff on Eyre Peninsula situated at latitude 34°25.14'S, longitude 135°21.4'E.

Port Lincoln

The waters of Port Lincoln contained within the geodesic from Point Bolingbroke situated at latitude 34° 32.51'S, longitude 136° 05.33'E, to Cape Donington situated at latitude 34° 43.73'S, longitude 135° 59.63'E.

Tod River

The waters of the Tod River.

The waters of Spencer Gulf within a radius of 200 metres of the mouth of the Tod River.

Tumby Bay

The waters of Tumby Bay within a line from a point on the mainland adjacent to Tumby Island (latitude 34°24.55'S, longitude 136°07.75'E) to the southern point of Tumby Island (latitude 34°24.85'S, longitude 136°08.40'E), then following the high water mark on the eastern side of the island to a point on the northeastern side of the island (latitude 34°24.55'S, longitude 136°08.50'E) to a point on the mainland approximately 2.5 kilometres north of the Tumby Bay jetty (latitude 34°21.45'S, longitude 136°06.85'E).

The waters of Tumby Bay within a 500 metre radius of the mouth of Second Creek (latitude 34°25.43'S, longitude 136°06.40'E) south of Tumby Bay.

Port Neill

The waters of Port Neill within a line drawn from Cape Burr (latitude 34°07.42'S, longitude 136°21.37'E) to a point on the mainland approximately 1.5 kilometres north of the Port Neill jetty (latitude 34°06.40'S, longitude 136°21.02'E).

Arno Bay

The waters of Arno Bay westerly of the geodesic from the high water mark at a point 200 metres north of the Arno Bay jetty situated at latitude 33° 55.0'S, longitude 136° 34.57'E, to the high water mark at a point due south known as South Point situated at latitude 33° 55.99'S, longitude 136° 34.57'E.

Cowell: Franklin Harbour

The waters of Franklin Harbour contained within the geodesic from Germain Point situated at latitude 33° 44.63'S, longitude 136° 58.0'E, to Victoria Point situated at latitude 33° 43.65'S, longitude 136° 59.31'E.

Germein Bay

The waters of Germein Bay within a line drawn from the mouth of Second Creek (latitude 33°09.03'S, longitude 137°56.3'E), northwards to a point in the bay (latitude 33°06.97'S, longitude 137°56.3'E), then north-westerly to Ward Spit light (latitude 33°02.8'S, longitude 137°49.4'E) and then generally east-north-east to Ward Point (latitude 33°00.22'S, longitude 137°57.08'E).

Port Broughton—Fisherman Bay

The waters of Spencer Gulf in the vicinity of Port Broughton and Fisherman Bay bounded as follows:

Commencing at a point at high water mark on the shore adjacent to the northern side of the entrance to Fisherman Bay, latitude 33° 32' 59" south, longitude 137° 56' 14" east, then in a direction of 232°T to a position on the eastern point of Shag Island, latitude 33° 33' 34" south, longitude 137° 55' 25" east, then in a direction of 183°T to a position on the northern shore of Webling Point, latitude 33° 35' 25" south, longitude 137° 55' 18" east, and including the waters of Fisherman Bay, Muntoora Bay and Muntoora Arm, and the anabranches and tributaries of those waters.

Port Victoria

Comprising those waters of Spencer Gulf exceeding 5 metres in depth bounded as follows:

Commencing at high water mark at Point Gawler, (position latitude 34° 30' 38" south, and longitude 137° 28' 25" east), then along the geodesic (300°T), to the north-western point on Goose Island, (position latitude 34° 27' 25" south, and longitude 137° 21' 40" east), then along the geodesic (050°T), to high water mark at Reef Point, (position latitude 34° 24' 00" south, and longitude 137° 26' 40" east), then along high water mark back to the point of commencement.

Pondalowie Bay

The waters of Spencer Gulf bounded as follows:

Commencing at a point at high water mark at the most northerly point of Royston Head (latitude 35° 11' 30" south, longitude 136° 50' 46" east), then along the geodesic to the most easterly point of North Islet (Pondalowie Bay) (latitude 35° 11' 50" south, longitude 136° 50' 33" east), then along the geodesic to the most easterly point of Middle Islet (Pondalowie Bay) (latitude 35° 13' 03" south, longitude 136° 50' 12" east), then along the geodesic to the most easterly point of South Islet (Pondalowie Bay) (latitude 35° 13' 54" south, longitude 136° 50' 04" east), then following the line of high water mark generally southerly to a point at high water mark near the south-easterly corner of the said South Islet (latitude 35° 14' 00" south, longitude 136° 49' 58" east), then along the geodesic due south to a point at high water mark on the southern shore of Pondalowie Bay (latitude 35° 14' 06" south, longitude 136° 49' 56" east), then following the line of high water mark along the shore of Pondalowie Bay to the point of commencement.

Wedge Island

The waters of Spencer Gulf bounded as follows:

Commencing at a point at high water mark on the most western point of Wedge Island, (latitude 35° 09' 03" south, and longitude 136° 26' 20" east), then along the geodesic (031°T), to a point at high water mark on the most western point of North Islet, (latitude 35° 07' 08" south, and longitude 136° 27' 45" east), then following the line of high water mark generally south-easterly and then north-easterly to a point at high water mark on the most south-easterly point of North Islet, (latitude 35° 07' 17" south, and longitude 136° 28' 40" east), then along the geodesic (164°T), to a point at high water mark on the most north-eastern point of Wedge Island, (latitude 35° 09' 54" south, and longitude 136° 29' 33" east), then following the line of high water mark generally north-westerly, southerly and westerly to the point of commencement.

Brown's Beach—Yorke Peninsula

All those waters in the vicinity of Brown's Beach, Yorke Peninsula, bounded as follows:

Commencing at a point at high water mark at the northern end of the beach (latitude 35° 09' 45" south, longitude 136° 53' 42" east), then in a direction of 197°T, directly through the reef approximately ¼mile offshore to a prominent point at the southern end of the beach (latitude 35° 11' 10" south, longitude 136° 53' 10" east), then along the high water mark in a generally easterly and northerly direction to the point of commencement.

Stansbury

The waters within a line drawn from the end of the groyne at Oyster Point (latitude 34°54.80'S, longitude 137°48.40'E) to a point in the bay 200 metres north of the Stansbury jetty (latitude 34°54.05'S, longitude 137°48.00'E) and then southwesterly to a point on the mainland 200 metres north of the jetty.

Coobowie

The waters within a line drawn from the causeway at Salt Swamp Creek (latitude 35°03.22~S, longitude 137°43.91~E) to a point at the end of the old Coobowie jetty structure (as defined by a "H" shaped pylon) (latitude 35°02.86~S, longitude 137°43.88~E) and from there to a point on the mainland adjacent to the area known locally as Hickies Point (latitude 35°02.76~S, longitude 137°45.00~E).

Edithburgh

The waters within a line drawn from Sultana Point (latitude 35°08.25'S, longitude 137°45.50'E) to a point on the mainland adjacent to the roadway running between sections 185 and 205 Hd Melville - in line with the watertower - (latitude 35°06.10'S, longitude 137°44.50'E).

The waters of Gulf St. Vincent, adjacent to the township of Edithburgh, that exceed 5 metres in depth and are comprised within the area bounded as follows:

Commencing at a point at highwater mark at Sultana Point, (position latitude 35° 06' 50" south, and longitude 137° 45' 38" east) then in a direction of 141°T to Marion Reef Buoy, (position latitude 35° 10' 30" south, and longitude 137° 49' 16" east), then in a direction of 006°T to Troubridge Lighthouse, (position latitude 35° 07' 08" south and longitude 137° 49' 42" east, then in a direction of 326°T to a point at high water mark, (adjacent to Giles Point), position latitude 35° 02' 25" south, and longitude 137° 45' 52" east, then generally westerly and southerly following high water mark to the point of commencement.

Price

The waters of Gulf St. Vincent in the vicinity of Port Price bounded as follows:

All those waters below high water mark within a radius of 1.1 nautical miles from the Will Creek Light Beacon north of Mangrove Point and all the waters of Will Creek together with the waters of its anabranches and tributaries.

Port Wakefield

The waters of Gulf St. Vincent situated within a distance of 100 metres of the dredged channel extending generally south-westerly from the mouth of the River Wakefield to low water mark.

Port Adelaide River

The waters of the Port Adelaide River upstream of the geodesic joining position latitude 34° 47.42'S, longitude 138° 27.92'E and position latitude 34° 47.15'S, longitude 138° 28.1'E (the entrance to the Port Adelaide River at Outer Harbour), including the waters of Gulf St. Vincent, adjoining the Port Adelaide River, and bounded within a line commencing at the north eastern end of the northern revetment mound (breakwater) at Outer Harbour, position latitude 34° 45.8'S, longitude 138° 29.18'E, then generally north westerly to the Section Bank pile beacon (Black Pole), latitude 34° 44.15'S, longitude 138° 27.84'E, then generally south easterly to the Middle Ground Outer Beacon position latitude 34° 45.23'S, longitude 138° 30.88'E, then generally south westerly to the northern extremity of the mangroves north of Torrens Island at position latitude 34° 45.42'S, longitude 138° 30.6'E, then in a generally south westerly direction contiguous with the northern extremity of the mangroves to Point Grey, at position latitude 34° 45.53'S, longitude 138° 30.48'E, then in a generally south easterly direction contiguous with the western extremity of the mangroves to the northern side of Torrens Island (in proximity to a marker beacon and pile situated opposite Snapper Point on Le Fevre Peninsula) at position latitude 34° 46.3'S, longitude 138° 31.3'E including the waters of North Arm west of the Grand Trunkway Road Bridge.

(CHART REFERENCE: DMH—TORRENS ISLAND AND ENVIRONS SMALL BOAT CHART).

Outer Harbour to Aldinga

Comprising all the waters of Gulf St. Vincent within 600 metres from the high water mark on the shore of the Gulf between the seaward end of the southernmost Outer Harbour breakwater and the southern boundary of the Aldinga Aquatic Reserve where latitude 35° 17.1'S meets the high water mark on the eastern shore of Gulf St. Vincent.

Patawalonga Lake

The waters of the Patawalonga lake.

The waters of Gulf St. Vincent within a radius of 500 metres from the northernmost part of the sluice gates at the mouth of the Patawalonga Lake.

Kangaroo Island—Kingscote Spit

The waters in the vicinity of Kingscote bounded as follows:

Commencing at a point at high water mark at Cape Rouge, latitude 35° 35' 52" south, and longitude 137° 37' 32" east, then along the geodesic (190°T), to a point at high water mark on the south coast of the Bay of Shoals, latitude 35° 38' 18" south, and longitude 137° 37' 05" east, then following the line of high water mark in a generally easterly and southerly direction to a point at high water mark at the landward end of the Kingscote Jetty, latitude 35° 39' 15" south, and longitude 137° 38' 32" east, then along the geodesic (123°T), for a distance of 2.3 nautical miles to position latitude 35° 40' 32" south, and longitude 137° 41' 00" east, then along the geodesic (033°T), for a distance of 2.1 nautical miles to position latitude 35° 38' 50" south, and longitude 137° 42' 15" east, then along the geodesic (325°T) to a point at highwater mark on Marsden Point, latitude 35° 33' 55" south, and longitude 137° 38' 07" east, then following the line of high water mark in a generally southerly direction back to the point of commencement.

American River—Eastern Cove

All the waters below high water mark in the vicinity of American River and Eastern Cove bounded as follows:

Commencing at a point at high water mark at American Beach latitude 35° 46' 02" south, and longitude 137° 52' 51" east, then along the geodesic (268°T), to a point at high water mark on the western shore of Eastern Cove, latitude 35° 46' 13" south, and longitude 137° 47' 06" east, then in a generally south-westerly direction along the high water mark to a position, (0.8 of a nautical mile) upstream from the American River Town Jetty, latitude 35° 47' 30" south, and longitude 137° 45' 30" east, then along the geodesic (154°T) to a point of land latitude 35° 48' 00" south, and longitude 137° 45' 50" east, then following high water mark in a generally north-easterly direction back to the point of commencement.

Parson's Beach—Fleurieu Peninsula

All those waters in the vicinity of Parson's Beach, Fleurieu Peninsula, bounded as follows:

Commencing at a point at high water mark at the eastern end of Parsons Beach (latitude 35° 38' 06" south, longitude 138° 28' 30" east), then in a direction of 275°T to a point at the western end of Parsons Beach (latitude 35° 38' 00" south, longitude 138° 27' 25" east), then along the high water mark in a generally easterly direction to the point of commencement.

Waitpinga Beach—Fleurieu Peninsula

All those waters in the vicinity of Waitpinga Beach, Fleurieu Peninsula, bounded as follows:

Commencing at a point at high water mark at Newland Head, (latitude 35° 38' 38" south, longitude 138° 31' 22" east), then in a direction of 284°T to a rocky headland at the western end of Waitpinga Beach (latitude 35° 38' 08" south, longitude 138° 28' 50" east), then following the high water mark in a generally easterly direction to the point of commencement.

Encounter Bay

The waters of Encounter Bay contained within the geodesics from the mouth of the River Hindmarsh situated at latitude 35° 32.74'S, longitude 138° 37.79'E, to the end of the breakwater on Granite Island situated at latitude 35° 33.83'S, longitude 138° 38.21'E, then to Rosetta Head situated at latitude 35° 35.59'S, longitude 138° 36.26'E.

Murray Mouth

Those waters within 500 metres of any part of the geodesic from a point at high water mark on the most south-easterly corner from the seaward side of Younghusband Peninsula to a point at high water mark on the most south-westerly corner from the seaward side of Sir Richard Peninsula.

Guichen Bay, Robe

All those waters of Guichen Bay bounded as follows:

Commencing at the prominent point located approximately one tenth of a nautical mile north-east of Cape Dombey (latitude 37° 09' 24" south, longitude 139° 44' 50" east), then in a direction of 109°T to an unnamed point (latitude 37° 09' 57" south, longitude 139° 46' 48" east), then along the high water mark in a generally westerly direction to the point of commencement.

Robe Lakes

The waters situated in the Hundred of Waterhouse.

Rivoli Bay, Beachport

The waters below high water mark of that portion of Rivoli Bay adjoining the hundred of Rivoli Bay, county of Grey, north-westerly of the geodesic joining the south-western corner of section 217, hundred of Rivoli Bay, to a point being the intersection of the jetty situated on block 15 adjacent to the town of Beachport, hundred of Rivoli Bay, with high water mark; and

The waters contained in the drainage channel connecting the waters of Lake George to the waters of Rivoli Bay.

Admella Dunes

Those waters of the ocean bounded as follows:

Commencing at a point on high water mark at Cape Banks, position latitude 37° 54' 00" south and longitude 140° 22' 30" east, then in a generally north-westerly direction along high water mark to a position latitude 37° 52' 00" south, and longitude 140° 21' 40" east, and all of the waters within 300 metres to seaward of the area of coastline defined.

Brown Bay

The waters of Brown Bay bounded as follows:

Commencing at a point on high water mark at Green Point, latitude 38° 03' 10" south, and longitude 140° 52' 15" east, then in a generally westerly direction along high water mark to Dangerous Point, latitude 38° 02' 58" south, and longitude 140° 48' 10" east, and all of the waters within 300 metres to seaward of the area of coastline defined.

Cooper Creek

The waters of Cooper Creek, its anabranches and lakes.

Other waters

All the inland waters of the State other than the inland waters specified in these regulations and the waters of the River Murray, the Coorong, Lakes Albert and Alexandrina and Lake George.

Jetties, Piers and Wharves

The waters within—

- (a) a distance of 500 metres from any portion of any of the following jetties, namely, the jetties at Brighton, Glenelg, Henley Beach, Grange, Semaphore and Largs Bay; and
- (b) a distance of 100 metres of any pier, wharf or other jetty.

Salmon Hole—Beachport

Those waters contained landwards of a straight line drawn from Cape Martin at position latitude 37° 29.41'S, longitude 140° 00.03'E to Post Office Rock at position latitude 37° 29.17'S, longitude 139° 59.59'E.

Part 2—Areas in which use of gill net, purse seine net or other hauling net is prohibited

West Coast

All those waters bounded as follows:

Commencing at a point north of Cape Blanche in Sceale Bay at the intersection of the high water mark and latitude 33°00'S, then in a generally southerly direction along the high water mark along the coastline of the West Coast to a point at the intersection of the high water mark with longitude 135°00'E, including the waters of Baird Bay, Venus Bay and Waterloo Bay, then from that point in a southerly direction along the geodesic to a point at latitude 33°50'S, and longitude 135°00'E, then in a north-westerly direction to a point at latitude 33°00'S, and longitude 134°00'E, then in an easterly direction along the geodesic to the point of commencement.

Tumby Bay to Dutton Bay

All of the waters adjacent to Tumby Bay and Dutton Bay on the western side of Spencer Gulf bounded as follows:

Commencing at the intersection of the high water mark in Dutton Bay and longitude 136°30'E, then in a southerly direction along the geodesic to a point at latitude 34°05'S, and longitude 136°30'E, then in a direction of 218°T to a point at latitude 34°30'S, and longitude 136°10'E, then in a westerly direction along the geodesic to the intersection of the high water mark south of Massena Bay and latitude 34°30'S, and then in a northerly direction along the high water mark of the coastline of Eyre Peninsula to the point of commencement.

Yorke Peninsula

All of the waters surrounding Yorke Peninsula bounded as follows:

Commencing at the intersection of the high water mark at Rogues Point and latitude 34°30'S, then in an easterly direction along the geodesic to a point at latitude 34°30'S, longitude 138°00'E, then in a southerly direction to a point at latitude 35°00'S, and longitude 138°00'E, then in a direction of 224°T to a point at latitude 35°15'S, and longitude 137°45'E, then in a direction of 260°T to a point at latitude 35°25'S, and longitude 136°45'E, then in a northerly direction along the geodesic to a point at latitude 34°45'S, and longitude 136°45'E, then in an easterly direction along the geodesic to a point at latitude 34°45'S, and longitude 137°15'E, then in a northerly direction along the geodesic to a point at latitude 34°00'S, and longitude 137°15'E, then in an easterly direction along the geodesic to a point at the intersection of the high water mark at Warburton Point and latitude 34°00'S, and then in a southerly direction along the high water mark of the coastline of Yorke Peninsula to the point of commencement.

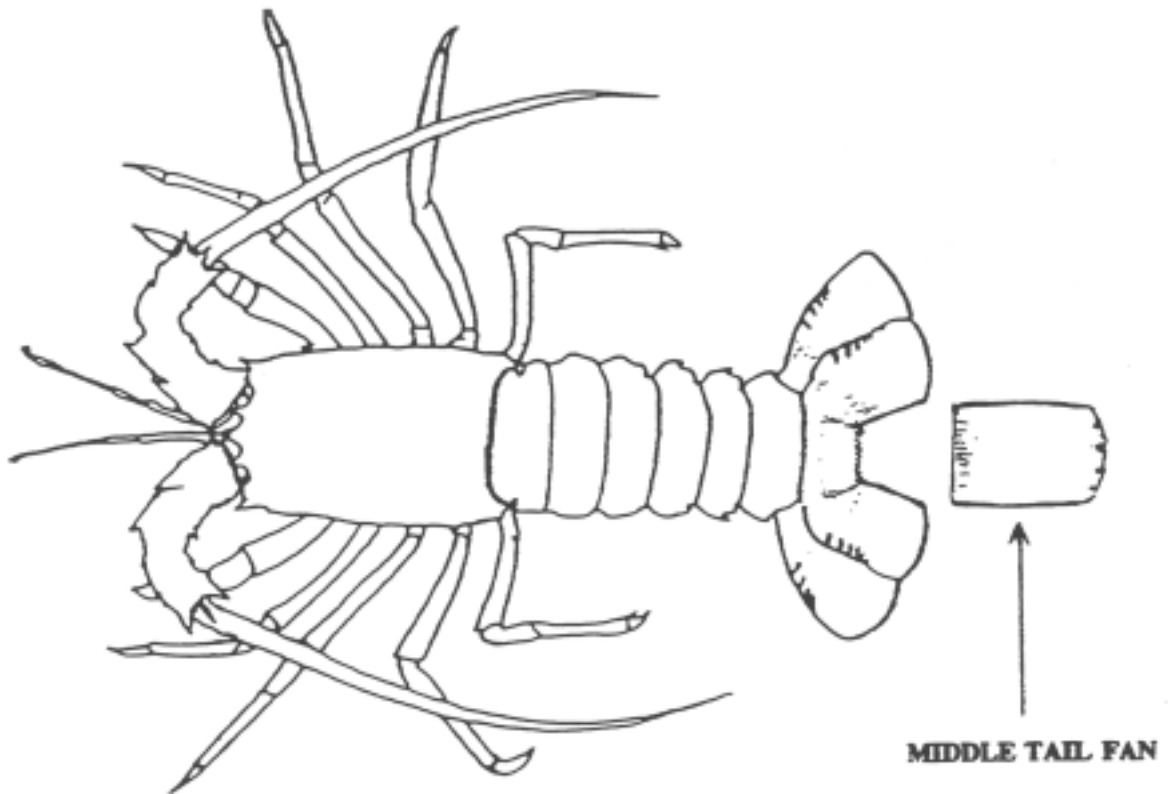
Schedule 3—Areas and carrying of explosive devices when diving

(Regulation 13)

- 1 The waters of the River Murray and all other fresh water streams of the State, and the area of land adjacent to those waters and which is within 100 metres of those waters.
- 2 The waters of the River Hindmarsh and River Inman and the waters of the sea within a radius of 200 metres from the mouth of each of those rivers.
- 3 The waters of Gulf St. Vincent within 600 metres of high water mark on the shore of the Gulf between the seaward end of the southernmost breakwater at Outer Harbour, (position latitude 34° 47' 30" south, and longitude 138° 28' 05" east), and a position at high water mark on the eastern shore of the Gulf at latitude 35° 07.97' south (adjacent to Gulfview Road), and adjoining the Port Noarlunga aquatic reserve.
- 4 The waters and adjacent foreshore areas within a distance of 100 metres from any part of any jetty, landing or wharf which is not within any of the areas defined in clauses 1, 2 or 3 of this Schedule.
- 5 The waters known as West Lakes and foreshore areas (including reserves for public use) adjacent to those waters.
- 6 The waters adjacent to Second Valley contained within a line commencing at a point on the seaward extremity of the western side of the bay at position latitude 35° 30.66' south, longitude 138° 12.82' east, then in a generally east-south-easterly direction to a point on the rocky shoreline of the eastern side of the bay at position latitude 35° 30.69' south, longitude 138° 13.13' east.

Schedule 4—Rock lobster—removal of middle tail fan

(Regulation 23)



Schedule 5—Fees

(Regulation 27)

1	For registration of a mesh net to be used by any person other than for trade or business (regulation 8)—	
	(a) where the applicant produces evidence to the satisfaction of the Director that he or she is in receipt of an age or invalid pension or is the holder of a State Concession Card issued by the Department for Families and Communities (per annum)	\$15.60
	(b) in any other case (per annum)	\$31.25
	No fee is payable where the Director registers a mesh net for a period of less than 1 year for the purpose of achieving a common expiry date for the registration of that mesh net and the registration of any other mesh net owned by the same person.	
2	For registration of a rock lobster pot to be used by any person other than for trade or business (regulation 8)—	
	(a) for registration of 1 rock lobster pot	\$52.00
	(b) for registration of 2 rock lobster pots	\$145.00
3	For registration of a device to be used pursuant to a fishery licence (regulation 9)—	
	(a) for registration of 1 or more swinger nets to be used pursuant to a licence in respect of the Lakes and Coorong Fishery	no fee
	(b) for registration of 1 or more fish nets (other than swinger nets) to be used pursuant to a licence in respect of the Lakes and Coorong Fishery	\$1 834.00
	(c) for registration of 1 or more fish nets to be used pursuant to a licence in respect of a rock lobster fishery	\$1 834.00
	(d) for registration of 1 or more pilchard nets to be used pursuant to a licence in respect of the Marine Scalefish Fishery	\$53 741.00
	(e) for registration of 1 or more fish nets (other than pilchard nets) to be used pursuant to a licence in respect of a marine scalefish fishery or the Miscellaneous Fishery	\$3 669.00
	(f) for registration of a fish net used solely to take fish for bait provided that the bait is not for sale	no fee
	(g) for registration of 1 or more sand crab pots to be used pursuant to a licence in respect of the Marine Scalefish Fishery	no fee
4	On application to vary the endorsement on a fishery licence of—	
	(a) a boat used pursuant to the licence	\$83.00
	(b) the person registered as the master of a boat used pursuant to the licence	\$83.00
5	On application to endorse an additional boat on a fishery licence	\$83.00
6	On application to register an interest in a fishery licence (section 65(3) of the Act)	\$135.00
7	On application for a permit under the Act	\$83.00

Fisheries (General) Regulations 2000—1.7.2006 to 21.3.2007
Schedule 5—Fees

8	On application for an exemption (section 59 of the Act)	\$104.00
9	On application for the issue of a duplicate authority	\$20.80
10	On application for the issue of a replacement tag for a rock lobster pot registered under regulation 8	\$20.80

Schedule 6—Undersize fish

1—Abalone taken by licensed person

- (1) Abalone of all species (except blacklip and greenlip) is undersize if—
 - (a) it is less than 13 centimetres in length; or
 - (b) the meat, having been removed from the shell, weighs less than 113 grams.
- (2) Abalone, blacklip is undersize—
 - (a) if taken in the waters of the Southern Zone within Area S—
 - (i) it is less than 11 centimetres in length; or
 - (ii) the meat, having been removed from the shell, weighs less than 90 grams; or
 - (b) if taken in the waters of the Southern Zone outside Area S—
 - (i) it is less than 12.5 centimetres in length; or
 - (ii) the meat, having been removed from the shell, weighs less than 106 grams; or
 - (c) if taken in the waters of the State outside the Southern Zone—
 - (i) it is less than 13 centimetres in length; or
 - (ii) the meat, having been removed from the shell, weighs less than 113 grams.
- (3) Abalone, greenlip is undersize—
 - (a) if taken in the waters of the Western Zone—
 - (i) it is less than 14.5 centimetres in length; or
 - (ii) the meat, having been removed from the shell, weighs less than 140 grams; or
 - (b) if taken in any other waters of the State—
 - (i) it is less than 13 centimetres in length; or
 - (ii) the meat, having been removed from the shell, weighs less than 113 grams.
- (4) Despite subclauses (1), (2) and (3), abalone of all species is not to be taken to be undersize if the meat when removed is below the minimum weight referred to in those subclauses provided that—
 - (a) the abalone is brought ashore and before shucking is delivered to a registered fish processor at premises at which that fish processor is registered to carry on business as a fish processor by virtue of the Act; and
 - (b) the length of the abalone is not below that required by this clause.
- (5) In this clause—

Area S has the same meaning as in regulation 13B of the *Fisheries (Scheme of Management—Abalone Fisheries) Regulations 1991*;

length, of an abalone, means the length of the abalone as measured at its greatest dimension as shown in diagram 1;

meat, in relation to an abalone, means all the muscular foot from which the viscera have been detached by the usual shucking procedure;

Southern Zone means all coastal waters east of the meridian of longitude 139° east (not including the waters of the Coorong or any other waters above the Murray Mouth);

Western Zone means all coastal waters west of the meridian of longitude 136° 30' 00" east.

- (6) This clause applies only in relation to abalone taken by a licensed person.

Diagram 1—Abalone (*Haliotis* spp.)



2—Abalone taken by unlicensed person

- (1) Abalone of all species (except greenlip) is undersize—
- (a) if it is less than 13 centimetres in length; or
 - (b) if the meat, having been removed from the shell, weighs less than 113 grams.
- (2) Abalone, greenlip is undersize—
- (a) if taken in the waters of the Western Zone—
 - (i) it is less than 14.5 centimetres in length; or
 - (ii) the meat, having been removed from the shell, weighs less than 140 grams; or
 - (b) if taken in any other waters of the State—
 - (i) it is less than 13 centimetres in length; or
 - (ii) the meat, having been removed from the shell, weighs less than 113 grams.

- (3) In this clause—

length, of an abalone, means the length of the abalone as measured at its greatest dimension as shown in diagram 1 in clause 1;

meat, in relation to an abalone, means all the muscular foot from which the viscera have been detached by the usual shucking procedure;

Southern Zone means all coastal waters east of the meridian of longitude 139° east such waters not including the waters of the Coorong or any other waters above the Murray Mouth;

Western Zone means all coastal waters west of the meridian of longitude 136° 30' 00" east;

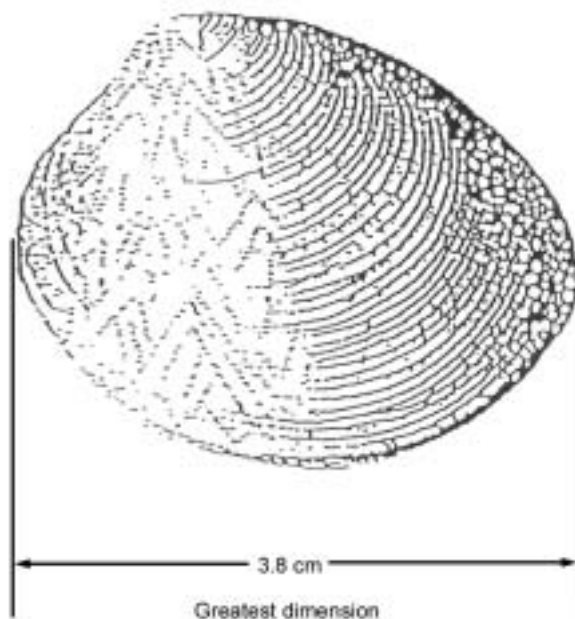
- (4) This clause applies only in relation to abalone taken by an unlicensed person.

3—Cockle

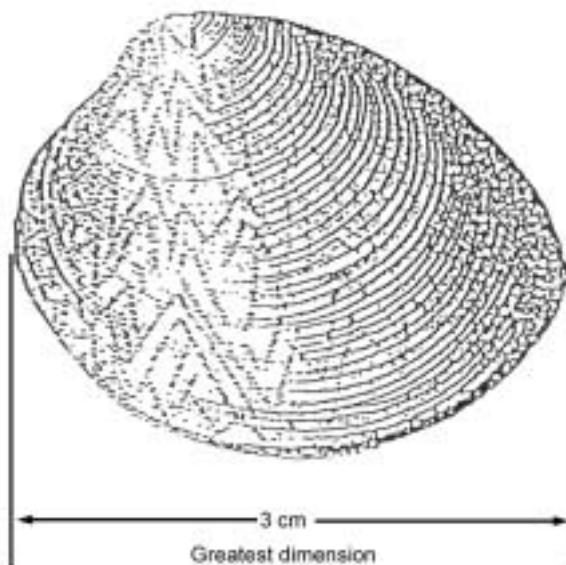
- (1) A mud cockle is undersize, if when measured at its greatest dimension as shown in diagram 2—
- in the case of mud cockle taken from the waters of the Coffin Bay complex south of a line drawn due east from Point Longnose to the mainland along the parallel of latitude 34° 31.4'S—the mud cockle is less than 3.8 centimetres; or
 - in any other case—the mud cockle is less than 3 centimetres.

Diagram 2—Mud Cockle (*Katelysia* spp.)

(Where taken from the waters of Coffin Bay)

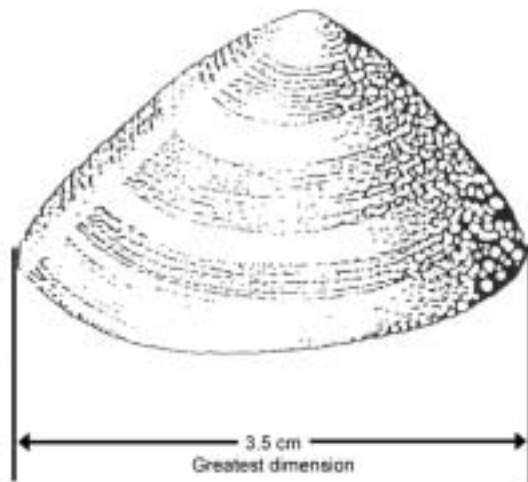


(Where taken from any other waters of the State)



- (2) A Goolwa cockle is undersize if, when measured at its greatest dimension as shown in diagram 3, it is less than 3.5 centimetres.

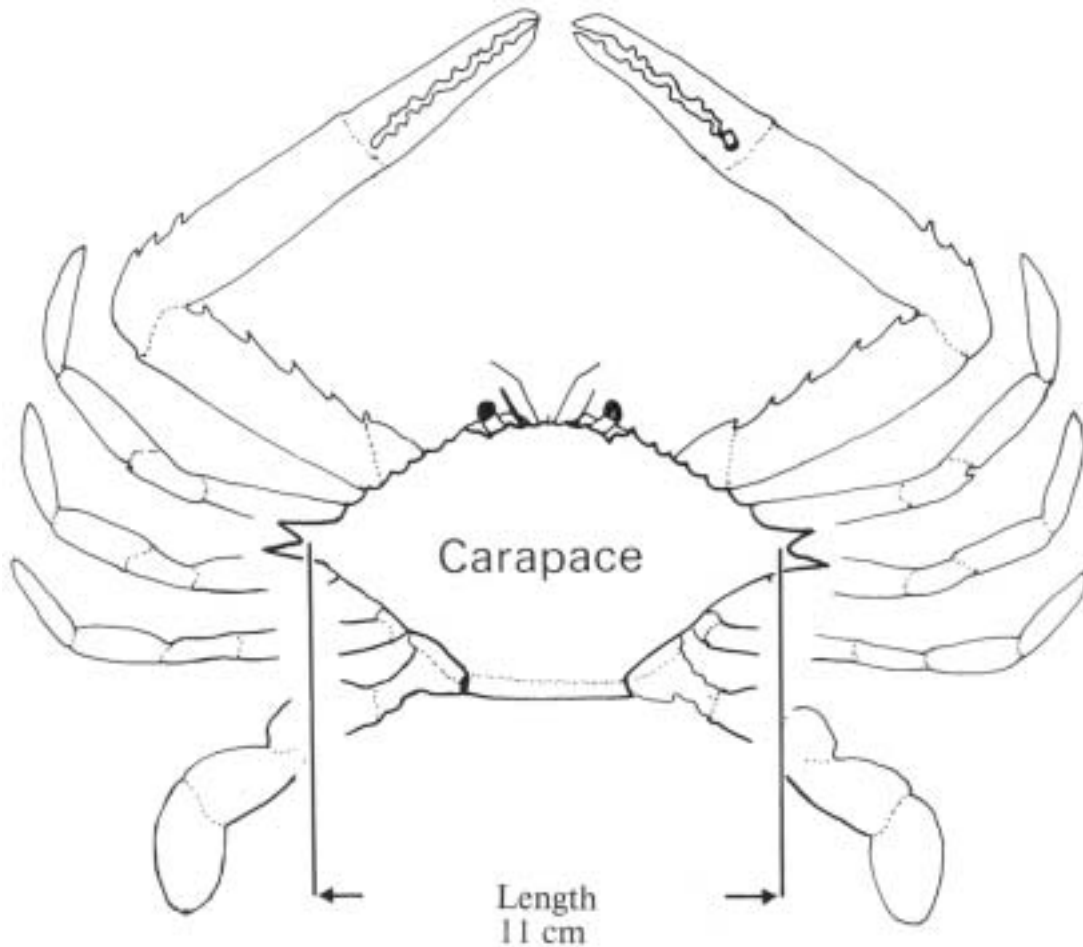
Diagram 3—Goolwa cockle (*Donax deltoides*)



4—Crab

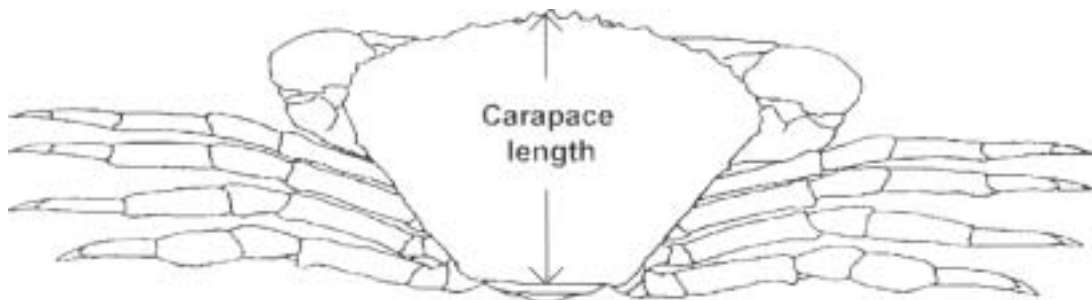
- (1) A blue crab is undersize if its length as shown in diagram 4 is less than 11 centimetres when measured from side to side at the base of the spines.

Diagram 4—Blue crab (*Portunus pelagicus*)



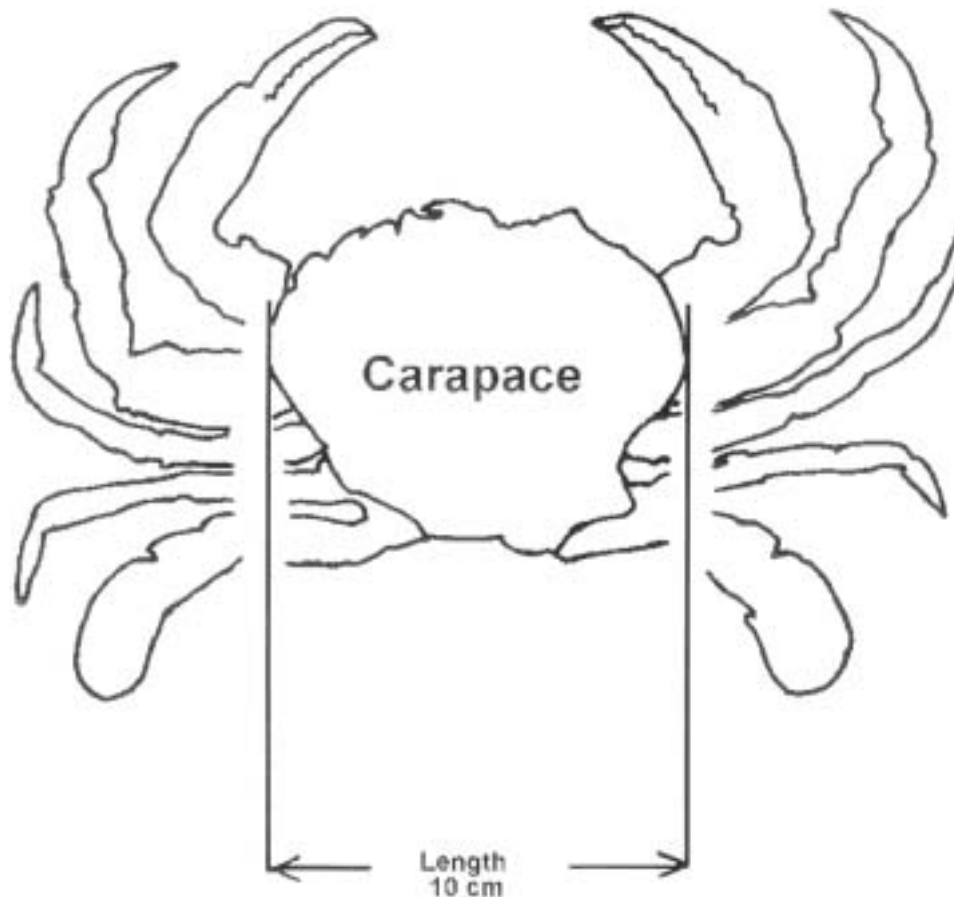
- (2) A giant crab is undersize if its length, as shown in diagram 5, is less than 15 centimetres when measured from the top to the bottom of its carapace.

Diagram 5—Giant crab (*Pseudocarcinus gigas*)



- (3) A sand crab is undersize if its length, as shown in diagram 6, is less than 10 centimetres when measured from side to side at the widest point of its carapace.

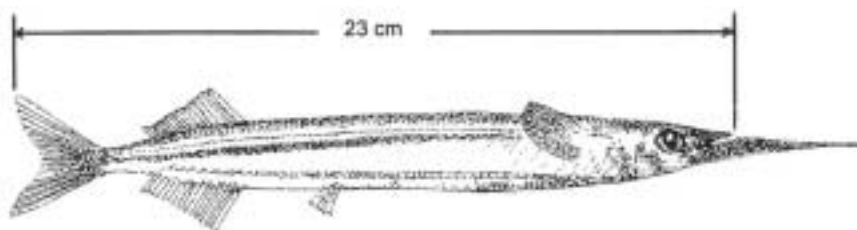
Diagram 6—Sand crab (*Ovalipes australiensis*)



5—Garfish

A garfish is undersize if its length, as shown in diagram 7, is less than 23 centimetres from the foremost part of the upper jaw to the end of the tail fin.

Diagram 7—Garfish (*Hyporhamphus melanochir*)



6—Mulloway

- (1) A mulloway is undersize if—
 - (a) in the case of mulloway taken in Coorong (area 1) or Coorong (area 2)—it is less than 46 centimetres in length; or
 - (b) in any other case—it is less than 75 centimetres in length.

- (2) In subclause (1)—

length, in relation to mullet, means the distance from the foremost part of the head to the end of the tail.

7—Rock lobster

- (1) A rock lobster is undersize if—
- (a) in the case of a rock lobster taken from the Northern Zone—it is less than 10.5 centimetres in length as shown in diagram 8; or
 - (b) in any other case—it is less than 9.85 centimetres in length as shown in diagram 9.

Diagram 8—Rock lobster (*Jasus edwardsii*)

Taken in the Northern Zone

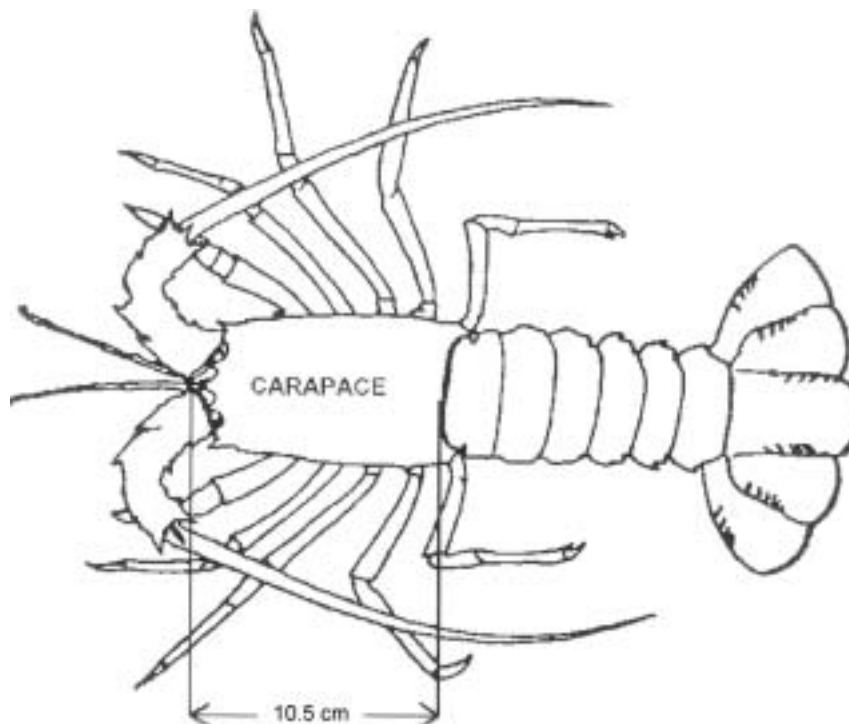
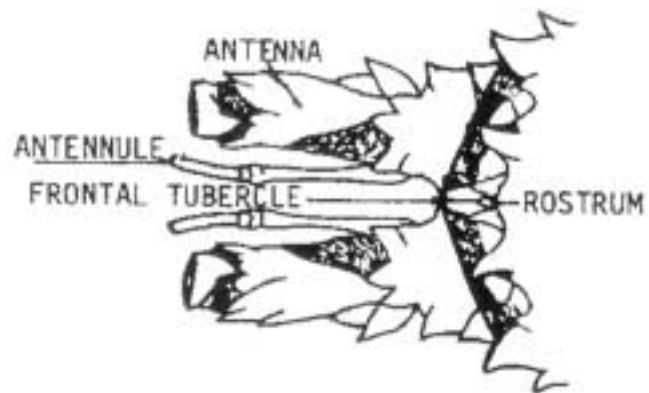
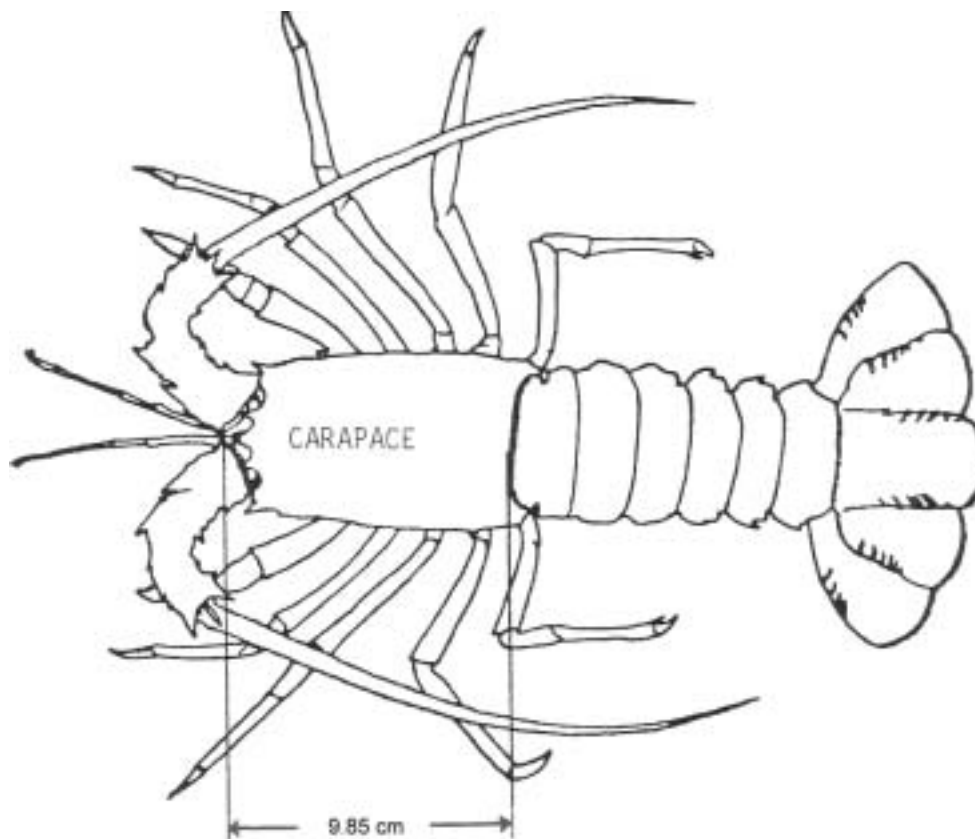


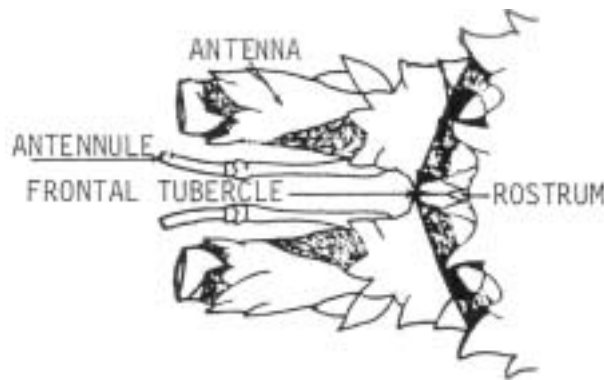
Diagram 9—Rock lobster (*Jasus edwardsii*)

Taken in other waters



Minimum length 9.85cm from anterior of frontal tubercle to posterior edge of carapace





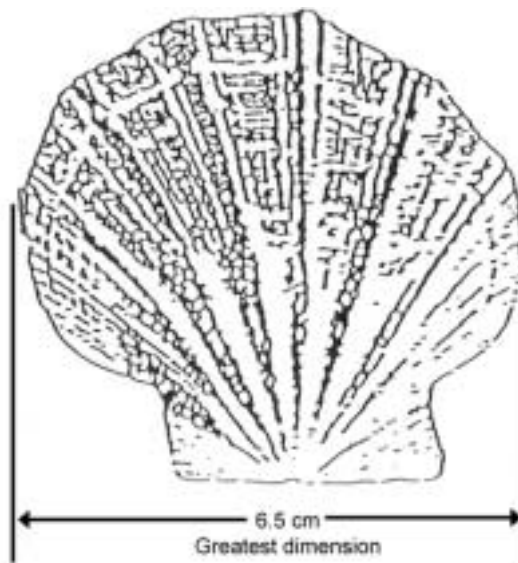
- (2) In subclause (1)—

length, in relation to rock lobster, means the length of the carapace measured in a direct medial line from the most forward part of the median suture marked on the frontal tubercle that is situated between the epimeral plates below and in front of the rostrum to the centre of the posterior edge of the carapace (but not including any hairs on the carapace).

8—Scallop

A scallop is undersize if, when measured at its greatest dimension as shown in diagram 10, it is less than 6.5 centimetres.

Diagram 10—Scallop (Family PECTINIDAE)

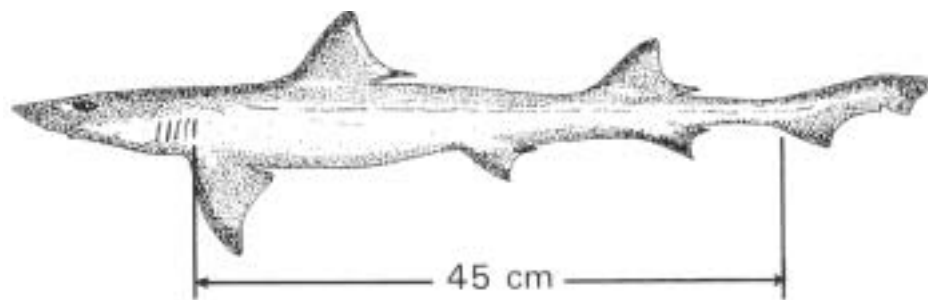


9—Shark

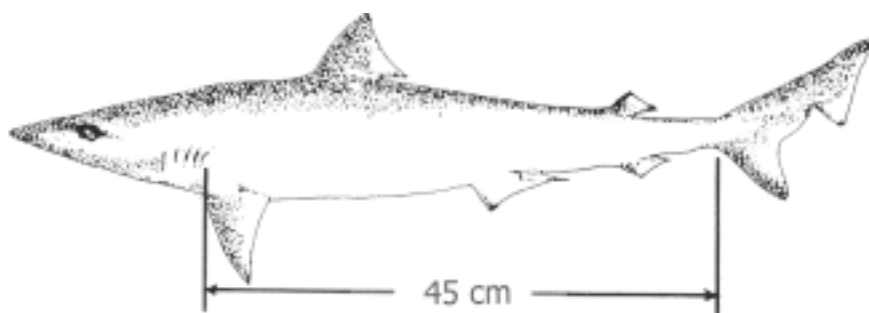
- (1) A gummy shark or school shark is undersize if it is less than 45 centimetres in length.
(3) In this clause—

length, in relation to a shark, means the partial length of the shark from the fifth gill slit to the base of the tail, measured in a straight line from the middle of the posterior edge of the gill slit nearest the tail to the ventral insertion of the caudal fin, as shown in diagram 11.

Diagram 11—Gummy shark (*Mustelus antarcticus*)



School shark (*Galeorhinus galeus*)



9A—Whiting, King George

- (1) A King George whiting (*Syllaginodes punctatus*) is undersize if—
 - (a) in the case of such whiting taken in waters of the State east of the meridian of longitude 136° east or in waters of Spencer Gulf west of that meridian—it is less than 31 centimetres in length; or
 - (b) in any other case—it is less than 30 centimetres in length.
- (2) In subclause (1)—

length, in relation to King George whiting, means the distance from the foremost part of the head to the end of the tail.

10—Other species and classes of fish

A fish of a class or species specified in column 1 of the table below is undersize if that fish is, when measured from the foremost part of the head to the end of the tail, less than the length (in centimetres) shown in column 2 of the table immediately alongside of the class or species so specified.

Column 1 Class or species of fish	Column 2 Length (cm)
Bream (<i>Acanthopagrus</i> spp.)	28
Flathead (<i>Platycephalus</i> spp.)	30
Flounder (Family Pleuronectidae)(Family Bothidae)	25
Groper, Blue (<i>Achoerodus gouldii</i>)	60
Kingfish, Yellowtail (<i>Seriola grandis</i>)	60
Morwong, Blue (<i>Nemadactylus valenciennesi</i>)	38

Column 1 Class or species of fish	Column 2 Length (cm)
Mullet (Family Mugilidae)	21
Murray cod (<i>Maccullochella peelii</i>)	50
Nannygai, red snapper, swallowtail (Genus centroberyx)	30
Perch, golden (<i>callop</i>) (<i>Macquaria ambigua</i>)	33
Perch, Lake Eyre callop (<i>Macquaria n.sp</i>)	33
Perch, silver (<i>Bidyanus bidyanus</i>)	33
Salmon (<i>Arripis truttaceus</i>)	21
Samson fish (<i>Seriola hippos</i>)	75
Snapper (<i>Pagrus auratus</i>)	38
Snook (<i>Sphyraena novaehollandiae</i>)	45
Sweep (<i>Genus Scorpis</i>)	24
Trevally, silver (<i>Pseudocaranx dentex</i>)	24
Trout, brown (<i>Salmo trutta</i>)	28
Trout, rainbow (<i>Oncorhynchus mykiss</i>)	28
Whiting, yellowfin, western sand (<i>Sillago schomburgkii</i>)	24

Schedule 7—Species of fish prescribed for the purposes of section 48G of the Act

Annelids

blood worm	Class POLYCHAETA
tube worm	Class POLYCHAETA
beach worm	Class POLYCHAETA

Coelenterata

jellyfish

Crustaceans

southern rock lobster	<i>Jasus edwardsii</i>
western king prawn	<i>Penaeus latisulcatus</i>
blue crab	<i>Portunus pelagicus</i>
yabbies	<i>Cherax destructor</i>
freshwater shrimp	<i>Macrobrachium australiensis</i>
sand crab	<i>Ovalipis australiensis</i>
rock crab	<i>Nectocarcinus integrifrons</i>
velvet crab	<i>Nectocarcinus tuperculosus</i>
giant crab	<i>Psuedo-carcinus gigas</i>
slipper lobster	<i>Ibacus</i> spp.

Echinoderms

sea urchin	<i>Heliocidaris erythrogramma</i>
------------	-----------------------------------

Fin fish

Class TELEOSTOMI

Molluscs

abalone	<i>Haliotis laevigata</i>
	<i>Haliotis rubra</i>
	<i>Haliotis roei</i>
allied cowrie, bean cowrie	<i>Triviida</i>
arrow squid	<i>Nototodarus gouldi</i>
black cowrie	<i>Zoila friendii thersites</i>
calamary	<i>Sepioteuthis australis</i>
cardita	<i>Carditidae</i>
chiton	<i>Chitonidae</i>
cockle	<i>Kataysia</i> spp.
cone shell	<i>Conidae</i>
cowrie	<i>Cypraeidae</i>
cuttlefish	<i>Sepia</i> spp.
dog welk	<i>Nassaridae</i>

Fisheries (General) Regulations 2000—1.7.2006 to 21.3.2007Schedule 7—Species of fish prescribed for the purposes of section 48G of the Act

dove shell	<i>Calumbellidae</i>
eulima	<i>Eulimidae</i>
finger nail, jackknife shell	<i>Solenidae</i>
Goolwa cockle	<i>Donax deltoides</i>
harp shell	<i>Harpidae</i>
heart cockle	<i>Cardiidae</i>
helmut shell	<i>Cassidae</i>
keyhole limpet and shield shell	<i>Fissurellidae</i>
ladder	<i>Epitoniidae</i>
limpet	<i>Patellidae</i>
limpet—air breathing	<i>Siphonariidae</i>
mactra, cockle	<i>Mactridae</i>
margin shell	<i>Marginellidae</i>
mitre shell	<i>Mitridae</i>
moon shell	<i>Naticidae</i>
murex, droop, purple/rock shell	<i>Muricidae</i>
mussels	<i>Mytilus</i> spp.
nutmeg shell	<i>Cancellaridae</i>
octopus	<i>Octopus</i> spp.
olive shell	<i>Olividae</i>
oyster	Family Ostridae
periwinkle, black crow	<i>Neritidae</i>
pheasant shell or painted lady	<i>Phasianellidae</i>
razor fish	<i>Pinna bicolor</i>
ring mouth shell	<i>Liotiidae</i>
scallop	Family Pectinidae
spindle shell	<i>Faxialariidae</i>
tellin, sunset shell	<i>Tellinidae</i>
thai, droop	<i>Thaididae</i>
thorny oyster	<i>Spondylidae</i>
triton	<i>Cymatiidae</i>
trochus, top, weed shell	<i>Trochidae</i>
turban and star shell	<i>Turbinidae</i>
turbo shell	<i>Turbo torquatus</i> <i>Turbo undulatus</i>
turid	<i>Turridae</i>
vase, chank shell	<i>Vasidae</i>
venus cockle	<i>Veneridae</i>

volute, baler	<i>Volutidae</i>
watering pot shell	<i>Clavagellidae</i>
welk	<i>Buccinidae</i>
<i>Sharks</i>	Class ELASMOBRANCHII

Schedule 8—Classes of fish and quantities prescribed for purposes of section 44(4) of Act

Column 1 Class of fish	Column 2 Quantity
Abalone (<i>Haliotis</i> spp.)	more than 25
Australian salmon (<i>Arripis truttaceus</i>)	
Over 35 cm in length	more than 40
Blue crab (<i>Portunus pelagicus</i>)	more than 100
Blue groper (<i>Achoerodus gouldii</i>)	more than 5
Calamary (<i>Sepioteuthis australis</i>)	more than 40
Flounder (Family Pleuronectidae) (Family Bothidae)	more than 50
Garfish (<i>Hyporhamphus melanochir</i>)	more than 200
King George whiting (<i>Sillaginodes punctatus</i>)	more than 75
Mulloway (<i>Argyrosomus hololepidotus</i>)	
75 cm more in length	more than 10
Less than 75 cm in length	more than 25
Razorfish (<i>Pinna bicolor</i>)	more than 125
Rock lobster (<i>Jasus edwardsii</i>)	more than 15
Sand crab (<i>Ovalipes australiensis</i>)	more than 100
Snapper (<i>Pagrus auratus</i>)	
60 cm or more in length	more than 5
less than 60 cm in length	more than 40
Snook (<i>Sphyraena novaehollandiae</i>)	more than 65
Yellowfin whiting (<i>Sillago schombergkii</i>)	more than 65

Schedule 9—Expiation of offences

(Regulation 32)

Fisheries Act 1982 section 41

Clause of Sch 1	Description of offence	Expiation Fee
	Engaging in a fishing activity of a prescribed class:	
1	<i>Taking fish using certain devices (recreational)</i>	\$100
2	<i>Taking fish using 2mm or greater gauge trace wire with fishing hooks size 12/0 or greater</i>	\$100
4	<i>Taking fish using more than specified number of certain devices in coastal waters (recreational)</i>	\$100
5	<i>Taking fish using fish net in coastal waters (recreational)</i>	\$100
6	<i>Taking fish using hauling net in coastal waters during specified times (commercial)</i>	\$100
7	<i>Taking fish using long line in coastal waters (recreational)</i>	\$100
8	<i>Taking fish using unattended long line (commercial)</i>	\$100
10	<i>Taking fish using certain devices or more than specified number of certain devices in River Murray (recreational)</i>	\$100
12	<i>Taking fish using fish net in Coorong (area 1) during specified period (recreational)</i>	\$100
13	<i>Taking fish using certain devices or more than specified number of certain devices in Coorong (area 1) or Coorong (area 2) (recreational)</i>	\$100
14	<i>Taking fish using certain devices or more than specified number of certain devices in Coorong (area 1) during specified period (recreational)</i>	\$100
15	<i>Taking fish using certain devices or more than specified number of certain devices in Lakes Albert and Alexandrina (recreational)</i>	\$100
16	<i>Taking fish using more than specified number of certain devices in Lake George (recreational)</i>	\$100
17	<i>Taking fish using more than 2 rods and lines at any 1 time</i>	\$50
18	<i>Taking fish using more than 2 hand lines at any 1 time</i>	\$50
19	<i>Taking fish using rod and line at same time as more than 1 hand line or using hand line at same time as more than 1 rod and line</i>	\$50
20(1)	<i>Using more than 1 teaser line from jetty etc</i>	\$50
20(2)	<i>Leaving unattended teaser line after deployment in water</i>	\$50
21	<i>Taking fish for purposes other than trade or business using device not registered in name of person using device (recreational)</i>	\$100
22	<i>Taking fish using unregistered device for trade or business (commercial)</i>	\$200
23	<i>Taking fish without buoying fish net or set line in specified waters</i>	\$50
24	<i>Taking fish without buoying fish net</i>	\$50
25	<i>Taking fish using drop line not marked with buoy (commercial)</i>	\$50
26	<i>Taking fish using trot line not marked with buoys (commercial)</i>	\$50

Fisheries Act 1982 section 41

Clause of Sch 1	Description of offence	Expiation Fee
27	<i>Taking fish using set line with more than 400 hooks (commercial)</i>	\$200
28(1)	<i>Taking fish using untagged device (commercial)</i>	\$50
29	<i>Taking fish using yabbie pot of unlawful specifications in inland waters</i>	\$50
30	<i>Taking fish using fish net in waters specified in Schedule 2</i>	\$200
32	<i>Taking fish using fish net within 100 metres of line in certain waters</i>	\$50
33	<i>Taking fish using hauling net of unlawful specifications in Venus Bay</i>	\$200
34	<i>Taking fish using fish net in certain waters of Spencer Gulf</i>	\$200
35	<i>Taking fish using fish net in Streaky Bay-Blanche Port</i>	\$200
36	<i>Taking fish using fish net of unlawful specifications in Lake George</i>	\$200
37	<i>Taking fish using fish net in State waters deeper than 5 metres</i>	\$200
38	<i>Taking fish using certain devices in specified waters</i>	\$200
39	<i>Taking fish using certain devices in specified waters within Counties MacDonnell, Robe and Grey</i>	\$200
40	<i>Taking fish using hauling net or seine net of unlawful specifications in coastal waters</i>	\$200
41	<i>Taking fish using mesh net or gill net of unlawful specifications in coastal waters (commercial)</i>	\$200
42	<i>Taking fish using large mesh net exceeding 600 metres in length</i>	\$200
43	<i>Taking fish using large mesh net left in waters for more than 4 hours</i>	\$100
44	<i>Taking fish using more than 5 large mesh nets at any 1 time</i>	\$200
45	<i>Taking fish using large mesh net not shot out in straight line in Gulf St. Vincent or Spencer Gulf</i>	\$50
49	<i>Taking fish using fish net fixed etc across bay, inlet etc</i>	\$200
50	<i>Taking fish by fixing or placing stake, log etc across mouth of waters, channel etc so as to impair free passage of fish</i>	\$100
51	<i>Taking salmon using purse seine net of unlawful specifications</i>	\$200
53	<i>Taking fish using shrimp trap of unlawful specifications</i>	\$50
54	<i>Taking fish using fish trap of unlawful specifications (commercial)</i>	\$50
55	<i>Taking ocean leather jacket using fish trap of unlawful specifications in waters deeper than 60 metres (commercial)</i>	\$50
56	<i>Taking prawns using prawn trawl net of unlawful specifications (commercial)</i>	\$200
60	Taking undersize fish: <ul style="list-style-type: none"> • up to 10 fish • more than 10 fish 	\$50 \$100
61	Taking razor fish (<i>bag limit</i>)—exceeding limit: <ul style="list-style-type: none"> • by up to 20 razor fish • by 21 to 40 razor fish 	\$50 \$100

Fisheries Act 1982 section 41

Clause of Sch 1	Description of offence	Expiation Fee
	<ul style="list-style-type: none"> • by more than 40 razor fish 	\$200
62	<i>Taking razor fish during closed season in specified waters</i>	\$100
63	<i>Taking molluscs from waters of West Lakes etc</i>	\$100
64	<i>Taking cockle from specified waters (commercial)</i>	\$100
65	<i>Taking benthic marine organism from specified waters of rocky reef</i>	\$300
66	Taking fish (<i>recreational non-charter boat fishing bag or boat limit</i>)—exceeding limit:	
	<ul style="list-style-type: none"> • by up to 10 fish 	\$50
	<ul style="list-style-type: none"> • by 11 to 20 fish 	\$100
	<ul style="list-style-type: none"> • by more than 20 fish 	\$200
67	Taking abalone (<i>recreational non-charter boat fishing bag or boat limit</i>)—exceeding limit:	
	<ul style="list-style-type: none"> • by up to 5 abalone 	\$50
	<ul style="list-style-type: none"> • by 6 to 10 abalone 	\$100
	<ul style="list-style-type: none"> • by more than 10 abalone 	\$200
67	Taking Murray cod (<i>recreational non-charter boat fishing bag or boat limit</i>)—exceeding limit:	
	<ul style="list-style-type: none"> • by up to 5 Murray cod 	\$100
	<ul style="list-style-type: none"> • by more than 5 Murray cod 	\$200
67	<i>Taking rock lobster—exceeding recreational non-charter fishing bag or boat limit in a rock lobster fishery</i>	\$300
68	Taking black cowrie (<i>recreational bag limit</i>)—exceeding limit:	
	<ul style="list-style-type: none"> • by up to 5 black cowrie 	\$200
	<ul style="list-style-type: none"> • by more than 5 black cowrie 	\$300
68	Taking Goolwa cockles (<i>recreational bag limit</i>)—exceeding limit:	
	<ul style="list-style-type: none"> • by up to 100 cockles 	\$50
	<ul style="list-style-type: none"> • by 101 to 200 cockles 	\$100
	<ul style="list-style-type: none"> • by more than 200 cockles 	\$200
68	Taking mud cockles (<i>recreational bag limit</i>)—exceeding limit:	
	<ul style="list-style-type: none"> • by up to 50 cockles 	\$50
	<ul style="list-style-type: none"> • by 51 to 100 cockles 	\$100
	<ul style="list-style-type: none"> • by more than 100 cockles 	\$200
68	Taking mulloway in Coorong (area 1) or Coorong (area 2) (<i>recreational bag limit</i>)—exceeding limit:	
	<ul style="list-style-type: none"> • by up to 10 mulloway 	\$50
	<ul style="list-style-type: none"> • by 11 to 20 mulloway 	\$100
	<ul style="list-style-type: none"> • by more than 20 mulloway 	\$200

Fisheries (General) Regulations 2000—1.7.2006 to 21.3.2007

Schedule 9—Expiation of offences

Fisheries Act 1982 section 41

Clause of Sch 1	Description of offence	Expiation Fee
68	Taking South-east crayfish (<i>recreational bag limit</i>)—exceeding limit: <ul style="list-style-type: none"> • by up to 5 crayfish • by more than 5 crayfish 	\$100 \$200
68	Taking yabbies— <i>exceeding bag limit (recreational)</i>	\$300
69	Taking fish (<i>recreational charter boat fishing boat or trip limit</i>)—exceeding limit: <ul style="list-style-type: none"> • by up to 10 fish • by 11 to 20 fish • by more than 20 fish 	\$50 \$100 \$200
70	Taking fish (<i>recreational charter boat fishing bag or trip limit</i>)—exceeding limit: <ul style="list-style-type: none"> • by up to 10 fish • by 11 to 20 fish • by more than 20 fish 	\$50 \$100 \$200
71	Taking abalone (<i>recreational charter boat fishing bag or trip limit</i>)—exceeding limit: <ul style="list-style-type: none"> • by up to 5 abalone • by 6 to 10 abalone • by more than 10 abalone 	\$50 \$100 \$200
71	Taking Goolwa cockles (<i>recreational charter boat fishing bag or trip limit</i>)—exceeding limit: <ul style="list-style-type: none"> • by up to 100 cockles • by 101 to 200 cockles • by more than 200 cockles 	\$50 \$100 \$200
71	Taking mud cockles (<i>recreational charter boat fishing bag or trip limit</i>)—exceeding limit: <ul style="list-style-type: none"> • by up to 100 cockles • by 101 to 200 cockles • by more than 200 cockles 	\$50 \$100 \$200
71	Taking rock lobster (<i>recreational charter boat fishing bag or trip limit</i>)—exceeding limit: <ul style="list-style-type: none"> • by up to 5 rock lobster • by 6 to 10 rock lobster • by more than 10 rock lobster 	\$50 \$100 \$200
71	Taking King George whiting (<i>recreational charter boat fishing bag or trip limit</i>)—exceeding limit: <ul style="list-style-type: none"> • by up to 10 whiting • by 11 to 20 whiting 	\$50 \$100

Fisheries Act 1982 section 41

Clause of Sch 1	Description of offence	Expiation Fee
	<ul style="list-style-type: none"> • by more than 20 whiting 	\$200
72	Taking fish (<i>recreational charter boat fishing bag, boat or trip limit</i>)—exceeding limit:	
	<ul style="list-style-type: none"> • by up to 10 fish 	\$50
	<ul style="list-style-type: none"> • by 11 to 20 fish 	\$100
	<ul style="list-style-type: none"> • by more than 20 fish 	\$200
73	Taking rock lobster by diving (<i>bag limit</i>)—exceeding limit:	
	<ul style="list-style-type: none"> • by up to 5 abalone 	\$50
	<ul style="list-style-type: none"> • by 6 to 10 abalone 	\$100
	<ul style="list-style-type: none"> • by more than 10 abalone 	\$200
74	Taking blue groper—exceeding maximum length limit:	
	<ul style="list-style-type: none"> • by up to 5 blue groper 	\$100
	<ul style="list-style-type: none"> • by more than 5 blue groper 	\$200
75	Taking Murray cod—exceeding maximum length limit:	
	<ul style="list-style-type: none"> • by up to 5 Murray cod 	\$100
	<ul style="list-style-type: none"> • by more than 5 Murray cod 	\$200
76	<i>Taking Murray cod during closed season</i>	\$200
78	<i>Taking blue crab during closed season in Spencer Gulf (commercial)</i>	\$200
79	<i>Taking blue crab during closed season in Gulf St. Vincent (commercial)</i>	\$200
80	<i>Taking blue crab in specified waters of Spencer Gulf (commercial)</i>	\$300
81	<i>Taking blue crab in specified waters (commercial)</i>	\$300
81A	<i>Taking sand crab using sand crab pot in specified waters (commercial)</i>	\$300
83	<i>Setting rock lobster pot containing rock lobster (recreational)</i>	\$100
85	<i>Taking rock lobster in specified waters</i>	\$200
86	<i>Taking rock lobster during closed season in Northern Zone Rock Lobster Fishery</i>	\$200
87	<i>Taking rock lobster during closed season in Southern Zone Rock Lobster Fishery</i>	\$200
89	<i>Taking rock lobster using rock lobster pot of unlawful specifications in Southern Zone Rock Lobster Fishery (commercial)</i>	\$50
90(1)(a)	<i>Taking rock lobster in Northern Zone using rock lobster pot of unlawful specifications (commercial)</i>	\$100
90(1)(b)	<i>Taking rock lobster in Northern Zone using more than 3 rock lobster pots not fitted with escape gaps (commercial)</i>	\$100
91	<i>Taking fish for bait using fish net other than bait net (commercial)</i>	\$300
93	<i>Taking rock lobster using fish spear etc</i>	\$200
95	<i>Taking bream during closed season in specified waters of Onkaparinga River</i>	\$100
96	<i>Taking fish using mesh net in Goolwa Channel on weekend</i>	\$100

Fisheries Act 1982 section 41

Clause of Sch 1	Description of offence	Expiation Fee
97	<i>Taking fish using mesh net of certain specifications in Goolwa Channel on weekdays</i>	\$100
98	<i>Taking fish using hauling net in Goolwa Channel on weekend</i>	\$100
99	<i>Taking fish using fish net or set line near Murray Mouth</i>	\$100
100	<i>Taking fish using mesh net of unlawful specifications in specified waters of Coorong</i>	\$100
101	<i>Taking fish in Lakes Albert and Alexandrina using mesh net of unlawful specifications</i>	\$100
102	<i>Taking fish in Murray Mouth using long line</i>	\$100
103	<i>Taking fish using certain devices in River Murray (commercial)</i>	\$100
105	<i>Taking fish in River Murray using unmarked device (commercial)</i>	\$50
106	<i>Taking fish in specified waters near barrages using mesh net as set net</i>	\$100
107	<i>Taking fish in waters of Lakes Albert and Alexandrina, Murray Mouth or Coorong using fish net within 200 metres of another net</i>	\$50
108	<i>Taking fish near River Murray locks</i>	\$100
109	<i>Taking Goolwa cockles during closed season</i>	\$50
110	<i>Taking fish using untagged device (recreational)</i>	\$50
111	<i>Taking fish using untagged registered mesh net (recreational)</i>	\$50
113	<i>Taking fish using unattended and unbuoyed hoop net (recreational)</i>	\$50
114	<i>Taking fish using unattended and unbuoyed drop net (recreational)</i>	\$50
115	<i>Taking fish using unattended and untagged yabbie pot or shrimp trap (recreational)</i>	\$50
116	<i>Taking rock lobster in waters of a rock lobster fishery using rock lobster pot of unlawful specifications (recreational)</i>	\$50
118(1)(a)	<i>Taking fish in fishing reach by trolling (recreational)</i>	\$100
118(1)(b)	<i>Taking fish in fishing reach using certain devices (recreational)</i>	\$100
118(1)(c)	<i>Taking fish in fishing reach using shrimp trap or yabbie pot not set from shore (recreational)</i>	\$50
119	<i>Taking blue crabs using crab net of unlawful specifications (commercial)</i>	\$100
120	<i>Taking crabs using crab net or hand net of unlawful specifications (recreational)</i>	\$50
122	<i>Taking fish using certain devices near specified artificial reefs</i>	\$100
122A	<i>Taking fish near Fleurieu Reef</i>	\$100
123	<i>Taking fish from registered boat for purposes other than trade or business</i>	\$100
124	<i>Taking fish in Lake George during specified hours using unattended mesh net (recreational)</i>	\$100
125	<i>Taking fish in Lake George using mesh net exceeding 75 metres in length (recreational)</i>	\$100
126	<i>Taking scallop using scallop dredge (commercial)</i>	\$200

Fisheries Act 1982 section 41

Clause of Sch 1	Description of offence	Expiation Fee
129	<i>Taking prawns by power hauling method</i>	\$200
130	<i>Taking fish by power hauling method using hauling net of unlawful specifications or unmarked hauling net</i>	\$100
131	<i>Taking fish using drum net of unlawful specifications (commercial)</i>	\$50
132	<i>Taking fish in certain coastal waters using swinger net (commercial)</i>	\$100
134	<i>Taking fish using certain fish traps (recreational)</i>	\$100
135	<i>Taking fish in Coorong using certain net (commercial)</i>	\$100
136	<i>Taking fish in Coorong (area 1) using certain net during closed season (commercial)</i>	\$200
137	<i>Taking fish in Coorong using small mesh monofilament net of unlawful specifications or used in unlawful manner (commercial)</i>	\$100
138	<i>Taking fish in Coorong using large mesh monofilament net otherwise than as set net (commercial)</i>	\$100
139	<i>Taking fish in Coorong using large mesh monofilament net of unlawful specifications as set net (commercial)</i>	\$100
140	<i>Taking fish in Coorong coastal waters using small mesh monofilament hauling net of unlawful specifications (commercial)</i>	\$100
141	<i>Taking fish in Coorong using small mesh monofilament hauling net of unlawful specifications etc (commercial)</i>	\$100
142	<i>Taking fish in Coorong using large mesh multifilament hauling net of unlawful specifications etc (commercial)</i>	\$100
143	<i>Taking fish in Lakes and Coorong Fishery for trade or business using more than specified number of devices</i>	\$100
144	<i>Taking fish in Lakes and Coorong Fishery for trade or business by electrofishing</i>	\$100
145	<i>Taking native fish in specified waters of River Murray (commercial)</i>	\$100

Fisheries (General) Regulations 2000

Regulation	Description of offence	Expiation Fee
10	<i>Failing to produce certificate of registration (recreational)</i>	\$50
13	<i>Carrying spear etc in specified areas defined in Schedule 3</i>	\$50
14	<i>Carrying spear etc while using scuba</i>	\$50
15	<i>Carrying devices in specified waters—locks/weirs of River Murray</i>	\$100
16(2)	<i>Using registered boat not bearing distinguishing marks</i>	\$100
16(3)	<i>Using dinghy not bearing distinguishing marks as tender to registered boat</i>	\$100
16(4)	<i>Failing to remove distinguishing marks from boat no longer registered</i>	\$50
18(1)	<i>Mutilating certain fish</i>	\$100
19(2)	<i>Failing to bring abalone above high water mark before removing shell (recreational)</i>	\$100

Fisheries (General) Regulations 2000—1.7.2006 to 21.3.2007
Schedule 9—Expiation of offences

Fisheries (General) Regulations 2000

Regulation	Description of offence	Expiation Fee
19(3)	<i>Failing to carry measuring device for measuring abalone</i>	\$100
19(4)	<i>Failing to replace undersize abalone</i>	\$100
19(5)	<i>Having possession, control or custody of abalone removed from shell</i>	\$200
20	<i>Storing or confining fish in corf not tagged and marked as required</i>	\$50
21(1)	<i>Storing or confining rock lobster in corf</i>	\$300
21(2)	<i>Storing or confining, out of season, live rock lobster taken from Northern Zone Rock Lobster Fishery</i>	\$300
22(1)	<i>Depositing more than 2 buoys not attached to device (holder of rock lobster fishery licence)</i>	\$50
22(2)	<i>Depositing buoy not marked as required (holder of rock lobster fishery licence)</i>	\$50
23(1)	<i>Failing to remove middle fan tail of rock lobster before landing (recreational)</i>	\$300
24(1)	<i>Using berley in certain waters</i>	\$100
24(2)	<i>Depositing or using in marine waters body or part of body of mammal</i>	\$100
24A(3)	<i>Leaving bait net unattended after setting net in waters (commercial)</i>	\$300
25(1)	<i>Failing to remove net buoys, anchors etc after completing netting in Lakes and Coorong (commercial)</i>	\$50
26(1)	<i>Failing to mark receptacles in which fish transported etc (commercial)</i>	\$50

Fisheries (Exotic Fish, Fish Farming and Fish Diseases) Regulations 2000

Regulation	Description of offence	Expiation Fee
9(1)	<i>Conducting fish farming operation without being registered</i>	\$200
9(5)	<i>Failing to lodge statistical returns</i>	\$100
26(1)	<i>Failing to keep records</i>	\$100

Legislative history

Notes

- This version is comprised of the following:

Part 1	20.10.2005
Part 2	25.1.2006
Part 3	24.6.2004
Schedule 1	20.10.2005
Schedule 2	11.8.2005
Schedule 3	1.1.2003 (Reprint No 12)
Schedule 4	1.1.2003 (Reprint No 12)
Schedule 5	1.7.2006
Schedule 6	20.10.2004
Schedule 7	1.1.2003 (Reprint No 12)
Schedule 8	1.11.2004
Schedule 9	20.10.2005
- Please note—References in the legislation to other legislation or instruments or to titles of bodies or offices are not automatically updated as part of the program for the revision and publication of legislation and therefore may be obsolete.
- Earlier versions of these regulations (historical versions) are listed at the end of the legislative history.
- For further information relating to the Act and subordinate legislation made under the Act see the Index of South Australian Statutes or www.legislation.sa.gov.au.

Principal regulations and variations

New entries appear in bold.

Year	No	Reference	Commencement
2000	222	<i>Gazette 31.8.2000 p1235</i>	1.9.2000: r 2
2001	15	<i>Gazette 1.3.2001 p812</i>	1.3.2001: r 2
2001	134	<i>Gazette 28.6.2001 p2424</i>	1.7.2001: r 2
2001	144	<i>Gazette 28.6.2001 p2453</i>	1.7.2001: r 2
2001	186	<i>Gazette 26.7.2001 p2795</i>	26.7.2001: r 2
2001	261	<i>Gazette 13.12.2001 p5419</i>	13.12.2001: r 2
2002	40	<i>Gazette 6.6.2002 p2097</i>	6.6.2002: r 2
2002	45	<i>Gazette 14.6.2002 p2150</i>	14.6.2002: r 2
2002	128	<i>Gazette 20.6.2002 p2677</i>	1.7.2002: r 2—disallowed on 29.8.2002 (<i>Gazette 5.9.2002 p3362</i>)
2002	187	<i>Gazette 26.9.2002 p3547</i>	26.9.2002: r 2
2002	203	<i>Gazette 31.10.2002 p4008</i>	31.10.2002: r 2
2002	208	<i>Gazette 7.11.2002 p4063</i>	7.11.2002: r 2
2002	228	<i>Gazette 12.12.2002 p4611</i>	12.12.2002 except r 3—1.1.2003: r 2

Fisheries (General) Regulations 2000—1.7.2006 to 21.3.2007

Legislative history

2003	7	<i>Gazette 23.1.2003 p324</i>	23.1.2003: r 2
2003	141	<i>Gazette 5.6.2003 p2407</i>	Pt 2 (r 5)—1.7.2003: r 2
2003	146	<i>Gazette 12.6.2003 p2498</i>	1.7.2003: r 2
2003	170	<i>Gazette 14.8.2003 p3241</i>	14.8.2003: r 2
2003	184	<i>Gazette 28.8.2003 p3388</i>	1.9.2003: r 2
2003	218	<i>Gazette 30.10.2003 p3940</i>	30.10.2003: r 2
2004	9	<i>Gazette 19.2.2004 p535</i>	19.2.2004: r 2
2004	137	<i>Gazette 24.6.2004 p2301</i>	Pt 3 (rr 7& 8)—24.6.2004: r 2
2004	205	<i>Gazette 23.9.2004 p3710</i>	1.10.2004: r 2
2004	206	<i>Gazette 23.9.2004 p3712</i>	1.10.2004: r 2—disallowed on 28.10.2004 (<i>Gazette 4.11.2004 p4150</i>)
2004	229	<i>Gazette 28.10.2004 p4138</i>	1.11.2004: r 2
2005	138	<i>Gazette 16.6.2005 p1834</i>	Pt 3 (r 6)—16.6.2005: r 2
2005	178	<i>Gazette 11.8.2005 p3016</i>	11.8.2005: r 2
2005	204	<i>Gazette 22.9.2005 p3392</i>	22.9.2005: r 2
2005	205	<i>Gazette 22.9.2005 p3413</i>	Sch 3 (cl 14)—1.10.2005: r 2
2005	220	<i>Gazette 20.10.2005 p3753</i>	20.10.2005: r 2
2006	15	<i>Gazette 25.1.2006 p376</i>	25.1.2006: r 2
2006	136	<i>Gazette 15.6.2006 p1859</i>	Pt 3 (r 6)—15.6.2006: r 2
2006	138	<i>Gazette 15.6.2006 p1870</i>	Pt 3 (r 5)—1.7.2006: r 2

Provisions varied

New entries appear in bold.

Entries that relate to provisions that have been deleted appear in italics.

Provision	How varied	Commencement
Pt 1		
<i>r 2</i>	<i>deleted under Legislation Revision and Publication Regulations 2002</i>	<i>24.6.2004</i>
r 4		
r 4(1)		
bait net	inserted by 220/2005 r 4(1)	20.10.2005
blue crab	inserted by 204/2005 r 4(1)	22.9.2005
blue groper	inserted by 204/2005 r 4(1)	22.9.2005
calamary	inserted by 204/2005 r 4(1)	22.9.2005
callop (golden perch)	inserted by 204/2005 r 4(1)	22.9.2005
callop (Lake Eyre perch)	inserted by 204/2005 r 4(1)	22.9.2005
catfish	inserted by 204/2005 r 4(1)	22.9.2005
Charter Boat Fishery	inserted by 204/2005 r 4(1)	22.9.2005
corf	inserted by 203/2002 r 3	31.10.2002
crab net	substituted by 146/2003 r 4	1.7.2003

cuttlefish	inserted by 204/2005 r 4(2)	22.9.2005
Gulf St. Vincent, Investigator Strait and Backstairs Passage	inserted by 204/2005 r 4(3)	22.9.2005
gummy shark	inserted by 204/2005 r 4(3)	22.9.2005
large catfish	inserted by 204/2005 r 4(4)	22.9.2005
large mullo way	inserted by 204/2005 r 4(5)	22.9.2005
large salmon	inserted by 204/2005 r 4(5)	22.9.2005
large snapper	inserted by 204/2005 r 4(5)	22.9.2005
length	substituted by 204/2005 r 4(5)	22.9.2005
mullo way	inserted by 204/2005 r 4(6)	22.9.2005
non-commercial purpose	inserted by 220/2005 r 4(2)	20.10.2005
Northern Zone	inserted by 220/2005 r 4(2)	20.10.2005
permitted device	varied by 40/2002 r 3(a)	6.6.2002
pilchard net	substituted by 7/2003 r 4	23.1.2003
rock lobster fishery	inserted by 15/2001 r 3	1.3.2001
salmon	inserted by 204/2005 r 4(7)	22.9.2005
sand crab	inserted by 204/2005 r 4(7)	22.9.2005
sand crab pot	inserted by 261/2001 r 3	13.12.2001
	varied by 40/2002 r 3(b)	6.6.2002
school shark	inserted by 204/2005 r 4(8)	22.9.2005
small catfish	inserted by 204/2005 r 4(9)	22.9.2005
small mullo way	inserted by 204/2005 r 4(10)	22.9.2005
small salmon	inserted by 204/2005 r 4(10)	22.9.2005
small snapper	inserted by 204/2005 r 4(10)	22.9.2005
snapper	inserted by 204/2005 r 4(10)	22.9.2005
southern bluefin tuna	inserted by 204/2005 r 4(10)	22.9.2005
Southern Zone	inserted by 220/2005 r 4(3)	20.10.2005
yellowfin tuna	inserted by 204/2005 r 4(11)	22.9.2005
r 4(6)	substituted by 220/2005 r 4(4)	20.10.2005
Pt 2		
r 6	varied by 15/2006 r 4(1), (2)	25.1.2006
r 8		
r 8(2a)	inserted by 186/2001 r 3(a)	26.7.2001
r 8(3a)	inserted by 186/2001 r 3(b)	26.7.2001
r 8(5)	varied by 186/2001 r 3(c)	26.7.2001
r 8(7)—(9)	inserted by 186/2001 r 3(d)	26.7.2001
r 9		
r 9(2)	substituted by 40/2002 r 4	6.6.2002
r 9(2a)—(2d)	inserted by 40/2002 r 4	6.6.2002

Fisheries (General) Regulations 2000—1.7.2006 to 21.3.2007

Legislative history

r 9(5a)	inserted by 261/2001 r 4	13.12.2001
r 18		
r 18(1)	varied by 170/2003 r 4(1)	14.8.2003
r 18(2a)	inserted by 170/2003 r 4(2)	14.8.2003
r 18(4)		
mutilate	substituted by 170/2003 r 4(3)	14.8.2003
r 19		
r 19(1)	varied by 228/2002 r 3	1.1.2003
r 19(6)	varied by 184/2003 r 4	1.9.2003
r 21		
r 21(1)	r 21 redesignated as r 21(1) by 229/2004 r 4	1.11.2004
r 21(2)	inserted by 229/2004 r 4	1.11.2004
	varied by 220/2005 r 5	20.10.2005
r 21(3)	inserted by 229/2004 r 4	1.11.2004
r 22	substituted by 15/2001 r 4	1.3.2001
r 24A	inserted by 220/2005 r 6	20.10.2005
r 26		
r 26(1)	varied by 205/2005 Sch 3 cl 14	1.10.2005
r 26A	<i>inserted by 206/2004 r 4</i>	<i>1.10.2004—disallowed</i> <i>28.10.2004</i>
Pt 3		
r 27		
r 27(1)	r 27 redesignated as r 27(1) by 137/2004 r 7	24.6.2004
r 27(2) and (3)	inserted by 137/2004 r 7	24.6.2004
Sch 1		
cl 9	<i>deleted by 40/2002 r 5(a)</i>	<i>6.6.2002</i>
cl 10	(a) deleted by 40/2002 r 5(b)	6.6.2002
cl 15	(a) deleted by 40/2002 r 5(c)	6.6.2002
cl 16	substituted by 40/2002 r 5(d)	6.6.2002
cl 20	substituted by 134/2001 r 3(a)	1.7.2001
cl 21	varied by 186/2001 r 4(a)	26.7.2001
cl 30	substituted by 178/2005 r 4	11.8.2005
cl 37	varied by 220/2005 r 7(1)	20.10.2005
cl 52	<i>deleted by 40/2002 r 5(e)</i>	<i>6.6.2002</i>
cl 57		
cl 57(1)	varied by 15/2001 r 5	1.3.2001
cl 61	varied by 134/2001 r 3(b)	1.7.2001
<i>cl 66 before substitution by 204/2005</i>		
cl 66(2)		
catfish	<i>inserted by 134/2001 r 3(c)</i>	<i>1.7.2001</i>
King George whiting	<i>varied by 205/2004 r 4(1), (2)</i>	<i>1.10.2004</i>

<i>large catfish</i>	<i>inserted by 134/2001 r 3(d)</i>	1.7.2001
<i>large salmon</i>	<i>substituted by 134/2001 r 3(d)</i>	1.7.2001
<i>length</i>	<i>varied by 134/2001 r 3(e)</i>	1.7.2001
<i>small catfish</i>	<i>inserted by 134/2001 r 3(f)</i>	1.7.2001
<i>small salmon</i>	<i>inserted by 134/2001 r 3(f)</i>	1.7.2001
<i>table</i>	<i>substituted by 134/2001 r 3(g)</i>	1.7.2001
cl 66	substituted by 204/2005 r 5(1)	22.9.2005
cl 67	substituted by 204/2005 r 5(1)	22.9.2005
	varied by 220/2005 r 7(2)	20.10.2005
cl 67A	<i>inserted by 134/2001 r 3(h)</i>	1.7.2001
	<i>deleted by 204/2005 r 5(1)</i>	22.9.2005
cl 68	substituted by 134/2001 r 3(i)	1.7.2001
	substituted by 204/2005 r 5(1)	22.9.2005
cl 69	substituted by 204/2005 r 5(1)	22.9.2005
cl 69(2)	varied by 220/2005 r 7(3)	20.10.2005
cl 70	substituted by 204/2005 r 5(1)	22.9.2005
cl 71	substituted by 204/2005 r 5(1)	22.9.2005
cl 72	substituted by 204/2005 r 5(1)	22.9.2005
cl 73	substituted by 204/2005 r 5(1)	22.9.2005
cl 74	substituted by 134/2001 r 3(j)	1.7.2001
	substituted by 204/2005 r 5(1)	22.9.2005
cl 75	substituted by 134/2001 r 3(k)	1.7.2001
	substituted by 204/2005 r 5(1)	22.9.2005
cl 76	substituted by 134/2001 r 3(l)	1.7.2001
	substituted by 204/2005 r 5(1)	22.9.2005
cl 77	<i>substituted by 134/2001 r 3(m)</i>	1.7.2001
	<i>deleted by 204/2005 r 5(1)</i>	22.9.2005
cll 77A—77D	<i>inserted by 134/2001 r 3(m)</i>	1.7.2001
	<i>deleted by 204/2005 r 5(1)</i>	22.9.2005
cl 81A	inserted by 261/2001 r 5	13.12.2001
cl 84	<i>deleted by 186/2001 r 4(b)</i>	26.7.2001
cl 86	varied by 220/2005 r 7(4)	20.10.2005
cl 87	varied by 220/2005 r 7(5)	20.10.2005
cl 88	varied by 220/2005 r 7(6) and (7)	20.10.2005
cl 89	varied by 220/2005 r 7(8)	20.10.2005
cl 90	substituted by 218/2003 r 4	30.10.2003
cl 90(4)	<i>deleted by 220/2005 r 7(9)</i>	20.10.2005
cll 91 and 92	<i>deleted by 229/2004 r 5</i>	1.11.2004
cl 91	inserted by 220/2005 r 7(10)	20.10.2005
cl 94	substituted by 220/2005 r 7(11)	20.10.2005
cl 95	varied by 134/2001 r 3(n)	1.7.2001
cl 104	<i>deleted by 40/2002 r 5(e)</i>	6.6.2002
cl 111	varied by 186/2001 r 4(c)	26.7.2001

Fisheries (General) Regulations 2000—1.7.2006 to 21.3.2007

Legislative history

<i>cl 112</i>	<i>deleted by 40/2002 r 5(e)</i>	6.6.2002
cl 116	varied by 186/2001 r 4(d), (e)	26.7.2001
<i>cl 117</i>	<i>deleted by 186/2001 r 4(f)</i>	26.7.2001
cl 118	substituted by 40/2002 r 5(f)	6.6.2002
cl 119	deleted by 40/2002 r 5(f)	6.6.2002
	inserted by 146/2003 r 5(1)	1.7.2003
cl 120	deleted by 40/2002 r 5(f)	6.6.2002
	inserted by 146/2003 r 5(1)	1.7.2003
<i>cl 121</i>	<i>deleted by 146/2003 r 5(2)</i>	1.7.2003
cl 122A	inserted by 208/2002 r 3	7.11.2002
cl 123		
cl 123(1)	cl 123 redesignated as cl 123(1) by 204/2005 r 5(2)	22.9.2005
cl 123(2)	inserted by 204/2005 r 5(2)	22.9.2005
cl 126	substituted by 40/2002 r 5(g)	6.6.2002
<i>cll 127 and 128</i>	<i>deleted by 40/2002 r 5(g)</i>	6.6.2002
cl 131	varied by 40/2002 r 5(h)	6.6.2002
<i>cl 133</i>	<i>deleted by 40/2002 r 5(i)</i>	6.6.2002
cl 134	varied by 40/2002 r 5(j)	6.6.2002
Sch 2		
Sch 2 Pt 1	Sch 2 redesignated as Sch 2 Pt 1 by 178/2005 r 5	11.8.2005
Denial Bay and Smoky Bay	varied by 40/2002 r 6	6.6.2002
Sch 2 Pt 2	inserted by 178/2005 r 5	11.8.2005
<i>Sch 5 before substitution by 137/2004</i>		
<i>cl 1</i>		
<i>cl 1(1)</i>	<i>varied by 186/2001 r 5(a)</i>	26.7.2001
<i>cl 1(3)</i>	<i>varied by 186/2001 r 5(b)</i>	26.7.2001
<i>cl 2</i>	<i>varied by 144/2001 r 3(a)—(d)</i>	1.7.2001
	<i>varied by 261/2001 r 6</i>	13.12.2001
	<i>varied by 45/2002 r 3(a)—(d)</i>	14.6.2002
	<i>varied by 141/2003 r 5</i>	1.7.2003
<i>cl 2</i>	<i>(e) deleted by 45/2002 r 3(e)</i>	14.6.2002
<i>cl 3</i>	<i>varied by 144/2001 r 3(e)</i>	1.7.2001
<i>cl 4</i>	<i>varied by 144/2001 r 3(f)</i>	1.7.2001
<i>cl 5</i>	<i>varied by 144/2001 r 3(g), (h)</i>	1.7.2001
<i>cl 6A</i>	<i>inserted by 186/2001 r 5(c)</i>	26.7.2001
<i>cl 8</i>	<i>varied by 144/2001 r 3(i)</i>	1.7.2001
	<i>deleted by 40/2002 r 7</i>	6.6.2002
Sch 5	substituted by 137/2004 r 8	24.6.2004
	substituted by 138/2005 r 6	16.6.2005
item 1	varied by 138/2006 r 5(1), (2)	1.7.2006

item 2	varied by 138/2006 r 5(3), (4)	1.7.2006
item 3	varied by 136/2006 r 6(1)—(3)	15.6.2006
items 4 and 5	varied by 138/2006 r 5(5)	1.7.2006
item 6	varied by 138/2006 r 5(6)	1.7.2006
item 7	varied by 138/2006 r 5(7)	1.7.2006
item 8	varied by 138/2006 r 5(8)	1.7.2006
items 9 and 10	varied by 138/2006 r 5(9)	1.7.2006
Sch 6		
cl 1		
cl 1(2)	substituted by 184/2003 r 5(1)	1.9.2003
cl 1(5)		
Area S	inserted by 184/2003 r 5(2)	1.9.2003
cl 3		
cl 3(1)	varied by 134/2001 r 4(a)	1.7.2001
cl 4		
Diagram 5	varied by 228/2002 r 4(a)	12.12.2002
Diagram 6	varied by 228/2002 r 4(b)	12.12.2002
cl 5	varied by 134/2001 r 4(b)	1.7.2001
Diagram 7	varied by 134/2001 r 4(c)	1.7.2001
cl 7		
cl 7(1)	varied by 220/2005 r 8	20.10.2005
cl 9		
cl 9(1)	substituted by 170/2003 r 5(1)	14.8.2003
cl 9(2)	<i>deleted by 170/2003 r 5(1)</i>	<i>14.8.2003</i>
Diagram 11 (School shark (Galeorhinus galeus))	varied by 134/2001 r 4(d)	1.7.2001
	varied by 170/2003 r 5(2)	14.8.2003
cl 9A	inserted by 205/2004 r 5(1)	1.10.2004
cl 10		
Table	substituted by 134/2001 r 4(e)	1.7.2001
	varied by 205/2004 r 5(2)	1.10.2004
Sch 7		
Molluscs	varied by 134/2001 r 5	1.7.2001
Sch 8		
	<i>varied by 206/2004 r 5</i>	<i>1.10.2004—disallowed 28.10.2004</i>
Sch 9		
Fisheries Act 1982		
Items relating to —		
cl 9	<i>deleted by 40/2002 r 8(a)</i>	<i>6.6.2002</i>
cl 20	substituted by 134/2001 r 6(a)	1.7.2001
cl 21	varied by 186/2001 r 6(a)	26.7.2001
cl 52	<i>deleted by 40/2002 r 8(b)</i>	<i>6.6.2002</i>

Fisheries (General) Regulations 2000—1.7.2006 to 21.3.2007Legislative history

cl 66	substituted by 204/2005 r 6	22.9.2005
cl 67	varied by 134/2001 r 6(b)	1.7.2001
	substituted by 204/2005 r 6	22.9.2005
cll 68—73	substituted by 204/2005 r 6	22.9.2005
cll 74 and 75	substituted by 134/2001 r 6(c)	1.7.2001
	substituted by 204/2005 r 6	22.9.2005
<i>cl 76 before substitution by 204/2005</i>		
<i>cl 76(1)</i>	<i>varied by 134/2001 r 6(d)</i>	<i>1.7.2001</i>
<i>cl 76(2) and (3)</i>	<i>substituted by 134/2001 r 6(e)</i>	<i>1.7.2001</i>
cl 76	substituted by 204/2005 r 6	22.9.2005
<i>cl 77 before deletion by 204/2005</i>		
<i>cl 77(1)</i>	<i>substituted by 134/2001 r 6(f)</i>	<i>1.7.2001</i>
<i>cl 77(2)</i>	<i>deleted by 134/2001 r 6(f)</i>	<i>1.7.2001</i>
cl 77	deleted by 204/2005 r 6	22.9.2005
<i>cl 77A before deletion by 204/2005</i>		
<i>cl 77A(1)</i>	<i>inserted by 134/2001 r 6(f)</i>	<i>1.7.2001</i>
cl 77A	deleted by 204/2005 r 6	22.9.2005
<i>cl 77B before deletion by 204/2005</i>		
<i>cl 77B(1)</i>	<i>inserted by 134/2001 r 6(f)</i>	<i>1.7.2001</i>
cl 77B	deleted by 204/2005 r 6	22.9.2005
<i>cl 77C before deletion by 204/2005</i>		
<i>cl 77C(1)</i>	<i>inserted by 134/2001 r 6(f)</i>	<i>1.7.2001</i>
cl 77C	deleted by 204/2005 r 6	22.9.2005
<i>cl 77D before deletion by 204/2005</i>		
<i>cl 77D(1)</i>	<i>inserted by 134/2001 r 6(f)</i>	<i>1.7.2001</i>
cl 77D	deleted by 204/2005 r 6	22.9.2005
cl 81A	inserted by 261/2001 r 7	13.12.2001
cl 84	deleted by 186/2001 r 6(b)	26.7.2001
cl 90	substituted by 218/2003 r 5(1)	30.10.2003
cl 91	inserted by 220/2005 r 9(1)	20.10.2005
cl 103	<i>varied by 128/2002 r 3</i>	1.7.2002—disallowed 29.8.2002
	varied by 187/2002 r 3	26.9.2002
cl 104	deleted by 40/2002 r 8(b)	6.6.2002
cl 105	varied by 15/2001 r 6(a)	1.3.2001

cl 111	varied by 186/2001 r 6(c)	26.7.2001
<i>cl 112</i>	<i>deleted by 40/2002 r 8(b)</i>	6.6.2002
cl 116	varied by 186/2001 r 6(d)	26.7.2001
<i>cl 117</i>	<i>deleted by 186/2001 r 6(e)</i>	26.7.2001
cl 118	substituted by 40/2002 r 8(c)	6.6.2002
<i>cl 119</i>	<i>deleted by 40/2002 r 8(c)</i>	6.6.2002
	<i>inserted by 146/2003 r 6(1)</i>	1.7.2003
cl 120	deleted by 40/2002 r 8(c)	6.6.2002
	inserted by 146/2003 r 6(1)	1.7.2003
<i>cl 121</i>	<i>deleted by 146/2003 r 6(2)</i>	1.7.2003
cl 122A	inserted by 208/2002 r 4	7.11.2002
cl 126	substituted by 40/2002 r 8(d)	6.6.2002
<i>cll 127 and 128</i>	<i>deleted by 40/2002 r 8(d)</i>	6.6.2002
cl 131	varied by 40/2002 r 8(e)	6.6.2002
<i>cl 133</i>	<i>deleted by 40/2002 r 8(f)</i>	6.6.2002
Fisheries (General)		
Regulations 2000		
Items relating to —		
r 16		
r 16(3)	varied by 15/2001 r 6(b)	1.3.2001
r 16(4)	varied by 15/2001 r 6(c)	1.3.2001
r 21		
r 21(1)	r 21 redesignated as r 21(1) by 229/2004 r 6(1)	1.11.2004
r 21(2)	inserted by 229/2004 r 6(2)	1.11.2004
r 22	substituted by 15/2001 r 6(d)	1.3.2001
r 23		
r 23(1)	varied by 15/2001 r 6(e)	1.3.2001
r 24		
r 24(2)	varied by 15/2001 r 6(f)	1.3.2001
r 24A		
r 24A(3)	inserted by 220/2005 r 9(2)	20.10.2005
r 25		
r 25(1)	varied by 15/2001 r 6(g)	1.3.2001
r 26A	<i>inserted by 206/2004 r 6</i>	1.10.2004—disallowed 28.10.2004
<i>Fisheries (Fish Processors)</i>		
<i>Regulations 1991</i>		
<i>Items and heading</i>		
	<i>varied by 144/2001 r 4</i>	1.7.2001
	<i>deleted by 218/2003 r 5(3)</i>	30.10.2003
<i>Fisheries (Scheme of Management—Rock Lobster Fisheries)</i>		
<i>Items and heading</i>		
	<i>deleted by 218/2003 r 5(2)</i>	30.10.2003

Table relating to deleted by 9/2004 r 4
Scheme of
Management
Fisheries

19.2.2004

Transitional etc provisions associated with regulations or variations

No 186 of 2001

7—Transitional provision

- (1) This regulation applies in relation to the registration of a rock lobster pot under regulation 8 of the principal regulations.
- (2) Despite Schedule 5 of the principal regulations as varied by these regulations, if the registration of a rock lobster pot in force at the commencement of these regulations expires after 1 October 2001 and an application to re-register that pot is made before the expiry of the registration, the fee payable on the application is \$25 per pot to be registered.
- (3) If the registration of a rock lobster pot in force at the commencement of these regulations expires after 1 October 2001, the Director must, before that date, issue to the person in whose name the pot is registered a tag bearing the registered number allotted to the pot.

No 45 of 2002

4—Transitional provision

- (1) The fees prescribed in respect of the registration of a device by Schedule 5 of the principal regulations, as varied by these regulations, apply where the registration is to take effect on or after 1 July 2002.
- (2) Despite regulation 3, the fees prescribed in respect of the registration of a device by Schedule 5 of the principal regulations, as in force immediately before the commencement of these regulations, continue to apply where the registration is to take effect before 1 July 2002.

Historical versions

Reprint No 1—1.3.2001
Reprint No 2—1.7.2001
Reprint No 3—26.7.2001
Reprint No 4—13.12.2001
Reprint No 5—6.6.2002
Reprint No 6—14.6.2002
Reprint No 7—1.7.2002
Reprint No 8—5.9.2002
Reprint No 9—26.9.2002
Reprint No 10—7.11.2002
Reprint No 11—12.12.2002
Reprint No 12—1.1.2003

Reprint No 13—23.1.2003
Reprint No 14—1.7.2003
Reprint No 15—14.8.2003
Reprint No 16—1.9.2003
Reprint No 17—30.10.2003
Reprint No 18—19.2.2004
24.6.2004
1.10.2004
31.10.2004 (electronic only)
1.11.2004
16.6.2005
11.8.2005
22.9.2005
1.10.2005
20.10.2005
25.1.2006
15.6.2006