

South Australia

## **Harbors and Navigation Variation Regulations 2007**

under the *Harbors and Navigation Act 1993*

---

### **Contents**

#### **Part 1—Preliminary**

- 1 Short title
- 2 Commencement
- 3 Variation provisions

#### **Part 2—Variation of *Harbors and Navigation Regulations 1994***

- 4 Variation of Schedule 3A—Ports
- 

### **Part 1—Preliminary**

#### **1—Short title**

These regulations may be cited as the *Harbors and Navigation Variation Regulations 2007*.

#### **2—Commencement**

These regulations come into operation on the day on which they are made.

#### **3—Variation provisions**

In these regulations, a provision under a heading referring to the variation of specified regulations varies the regulations so specified.

### **Part 2—Variation of *Harbors and Navigation Regulations 1994***

#### **4—Variation of Schedule 3A—Ports**

Schedule 3A, item relating to Port Adelaide—delete the item and substitute:

##### **Port Adelaide**

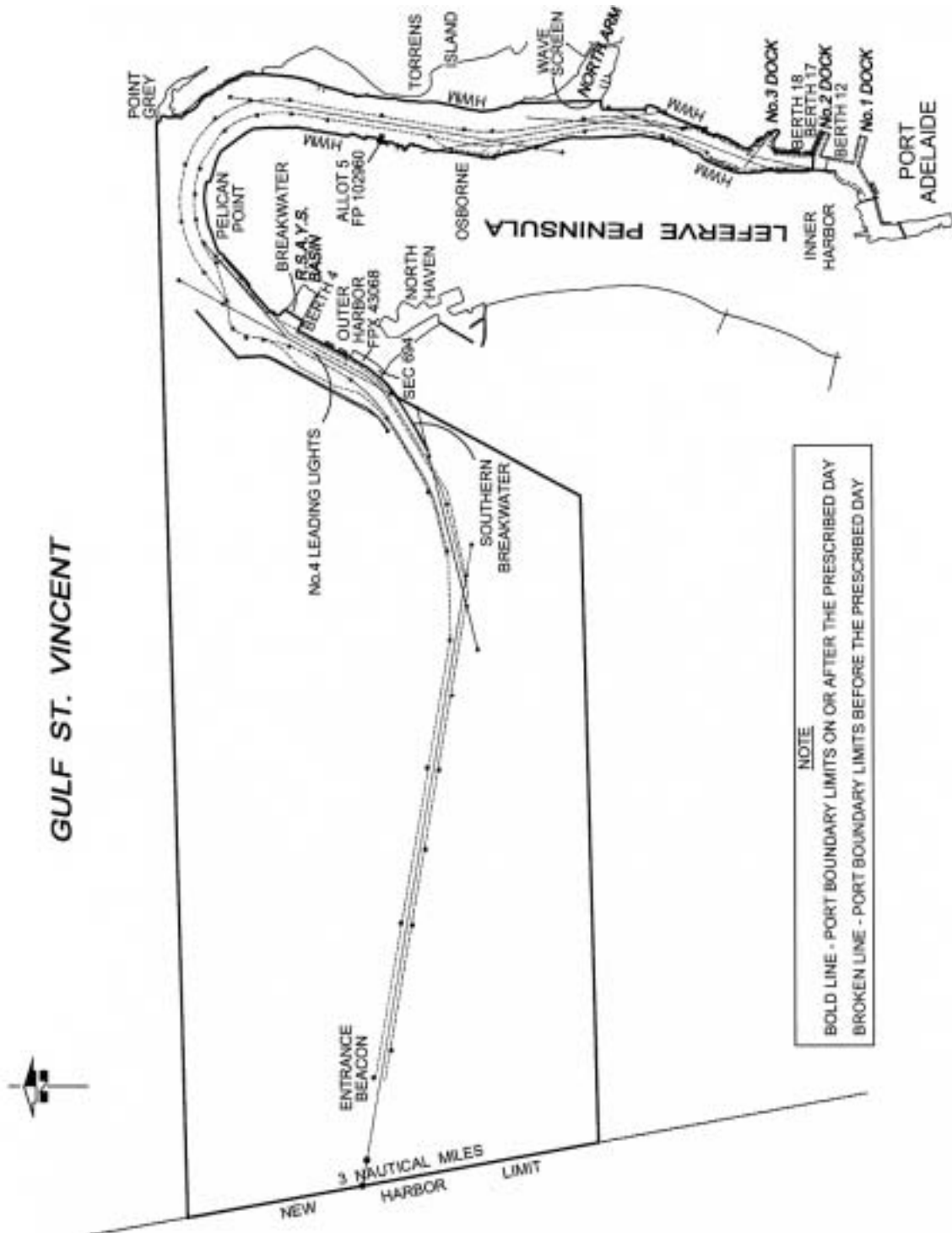
For the purposes of this item, the *prescribed day* is a day to be fixed by the Minister by notice in the Gazette.

The subjacent land underlying, and adjacent land extending from, the waters, rivers, creeks and inlets to the high water mark bounded as follows:

- commencing at Point Grey then due west along a line to its intersection with the western boundary of the harbor of Port Adelaide;

- then generally south south-easterly along the harbor boundary for 3 nautical miles;
- then along a line due east to its intersection with the south-westerly production of the Number 4 Leading Lights;
- then generally north-easterly along the production to its intersection with the high water mark on the southern face of the Southern Breakwater;
- then generally north-easterly along the high water mark to its intersection with the south-western boundary of Section 694 Hundred of Port Adelaide;
- then generally north-westerly along that boundary of Section 694 Hundred of Port Adelaide across the Southern Breakwater to its intersection with the high water mark on the northern face of the Southern Breakwater;
- then generally north-easterly along the high water mark to the northern extremity of Number 4 berth;
- then generally south-easterly along the high water mark to its intersection with the production southerly of the high water mark of the western face of the breakwater at the Royal South Australian Yacht Squadron (RSAYS);
- then generally north-easterly along the production across the RSAYS Basin;
- then generally north-westerly and north-easterly along the high water mark to Pelican Point;
- then generally south-easterly and southerly along the high water mark to its intersection with a line across the Port Adelaide River—
  - before the prescribed day—perpendicular to the high water mark alignment of Number 12 berth commencing at its intersection with a 180 metre radial line from the north west corner of Number 17 berth; or
  - on or after the prescribed day—perpendicular to the southern boundary of Number 18 berth;
- then generally easterly along that perpendicular line across the Port Adelaide River to its intersection with the high water mark;
- then generally north and easterly along the high water mark—
  - before the prescribed day— including Number 2 dock and Number 3 dock; or
  - on or after the prescribed day—including Number 3 dock,to its intersection with the Wave Screen in North Arm;
- then generally northerly along the western face of the Wave Screen and its production to intersect with the high water mark on Torrens Island;

- then generally northerly along the high water mark to the point of commencement at Point Grey;
  - and including Portion of Section 694 Hundred of Port Adelaide being the area described as easement E on FPX 43068,
- but excluding Allotment 5 FP 102960.



**Note—**

As required by section 10AA(2) of the *Subordinate Legislation Act 1978*, the Minister has certified that, in the Minister's opinion, it is necessary or appropriate that these regulations come into operation as set out in these regulations.

**Made by the Governor**

with the advice and consent of the Executive Council  
on 29 November 2007

No 269 of 2007

MTR07/039CS