

South Australia

Harbors and Navigation (Definition of Port Adelaide) Variation Regulations 2008

under the *Harbors and Navigation Act 1993*

Contents

Part 1—Preliminary

- 1 Short title
- 2 Commencement
- 3 Variation provisions

Part 2—Variation of *Harbors and Navigation Regulations 1994*

- 4 Variation of Schedule 3A—Ports
-

Part 1—Preliminary

1—Short title

These regulations may be cited as the *Harbors and Navigation (Definition of Port Adelaide) Variation Regulations 2008*.

2—Commencement

These regulations come into operation on the day on which they are made.

3—Variation provisions

In these regulations, a provision under a heading referring to the variation of specified regulations varies the regulations so specified.

Part 2—Variation of *Harbors and Navigation Regulations 1994*

4—Variation of Schedule 3A—Ports

Schedule 3A, entry relating to Port Adelaide—delete the entry and substitute:

Port Adelaide

For the purposes of this item, the *prescribed day* is a day to be fixed by the Minister by notice in the Gazette.

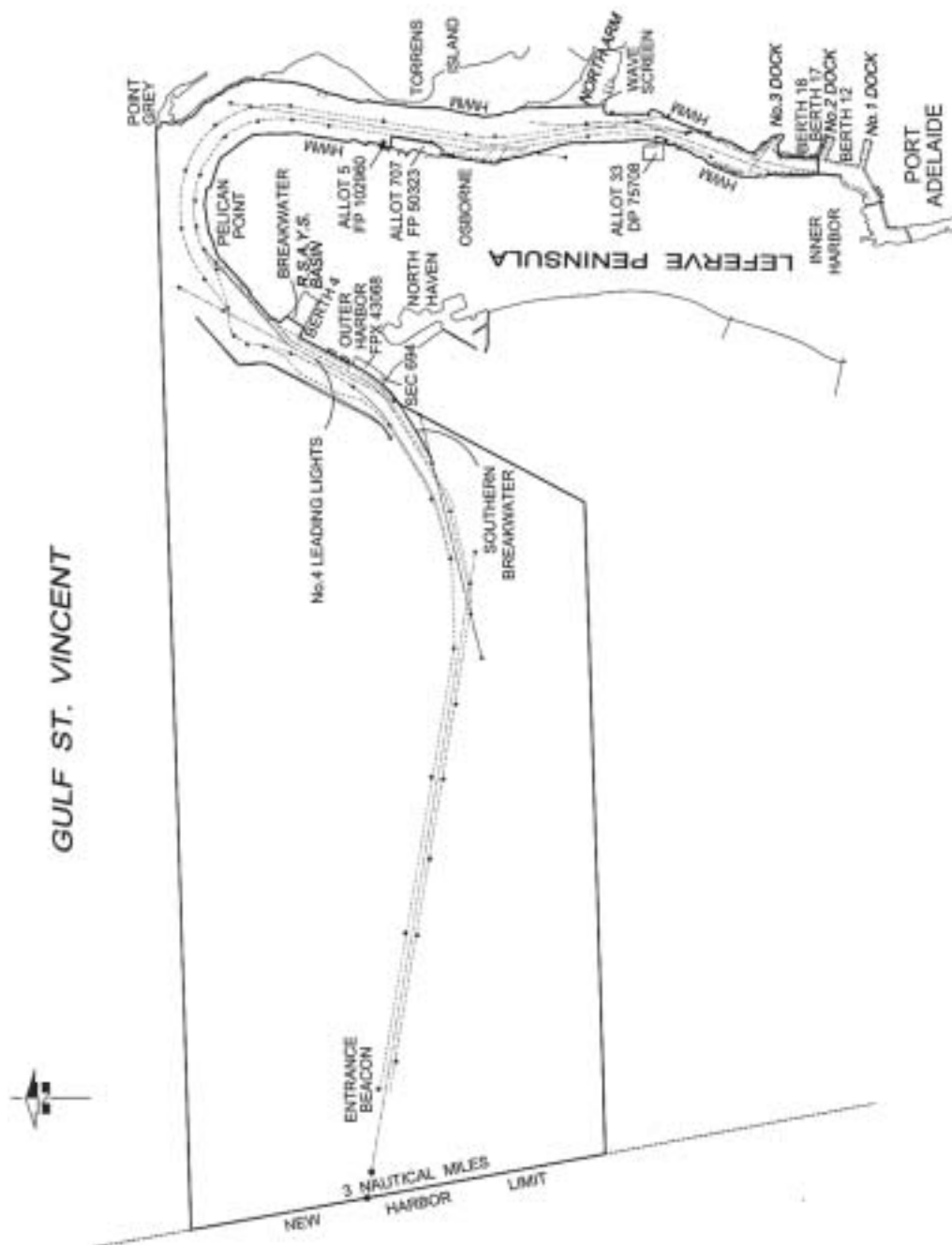
The subjacent land underlying, and adjacent land extending from, the waters, rivers, creeks and inlets to the high water mark bounded as follows:

- commencing at Point Grey then due west along a line to its intersection with the western boundary of the harbor of Port Adelaide;

- then generally south south-easterly along the harbor boundary for 3 nautical miles;
- then along a line due east to its intersection with the south-westerly production of the Number 4 Leading Lights;
- then generally north-easterly along the production to its intersection with the high water mark on the southern face of the Southern Breakwater;
- then generally north-easterly along the high water mark to its intersection with the south-western boundary of Section 694 Hundred of Port Adelaide;
- then generally north-westerly along that boundary of Section 694 Hundred of Port Adelaide across the Southern Breakwater to its intersection with the high water mark on the northern face of the Southern Breakwater;
- then generally north-easterly along the high water mark to the northern extremity of Number 4 berth;
- then generally south-easterly along the high water mark to its intersection with the production southerly of the high water mark of the western face of the breakwater at the Royal South Australian Yacht Squadron (RSAYS);
- then generally north-easterly along the production across the RSAYS Basin;
- then generally north-westerly and north-easterly along the high water mark to Pelican Point;
- then generally south-easterly and southerly along the high water mark to its intersection with a line across the Port Adelaide River perpendicular to the western face of Number 18 berth and intersecting the western face of Number 18 berth and its southerly production at the southern extremity of the western face of Number 18 berth;
- then generally easterly along that perpendicular line across the Port Adelaide River to its intersection with the high water mark;
- then generally northerly and easterly along the high water mark, including Number 3 dock, to its intersection with the Wave Screen in North Arm;
- then generally northerly along the western face of the Wave Screen and its production to intersect with the high water mark on Torrens Island;
- then generally northerly along the high water mark to the point of commencement at Point Grey;
- and including Portion of Section 694 Hundred of Port Adelaide being the area described as easement E on FPX 43068,

but excluding:

- before the prescribed day—Allotment 5 FP 102960; or
- on or after the prescribed day—
 - Allotment 5 FP 102960; and
 - Allotment 707 FP 50323; and
 - that Portion of Allotment 33 DP 75708 which comprises the Marina Adelaide basin and the entrance to that basin and is bounded by a straight line across the opening to the entrance that is an extension of the high water mark on the western bank of the river.



Note—

As required by section 10AA(2) of the *Subordinate Legislation Act 1978*, the Minister has certified that, in the Minister's opinion, it is necessary or appropriate that these regulations come into operation as set out in these regulations.

Made by the Governor

with the advice and consent of the Executive Council
on 14 August 2008

No 216 of 2008

MTR08/023