

South Australia

# **Harbors and Navigation Variation Regulations 2011**

under the *Harbors and Navigation Act 1993*

---

## **Contents**

### **Part 1—Preliminary**

- 1 Short title
- 2 Commencement
- 3 Variation provisions

### **Part 2—Variation of *Harbors and Navigation Regulations 2009***

- 4 Variation of Schedule 5—Restricted areas
  - 5 Variation of Schedule 10—Speed restrictions in certain waters
  - 6 Variation of Schedule 12—Boat havens
- 

## **Part 1—Preliminary**

### **1—Short title**

These regulations may be cited as the *Harbors and Navigation Variation Regulations 2011*.

### **2—Commencement**

- (1) Subject to subregulation (2), these regulations come into operation on the day on which they are made.
- (2) Regulation 4 will come into operation on 15 August 2011.

### **3—Variation provisions**

In these regulations, a provision under a heading referring to the variation of specified regulations varies the regulations so specified.

## **Part 2—Variation of *Harbors and Navigation Regulations 2009***

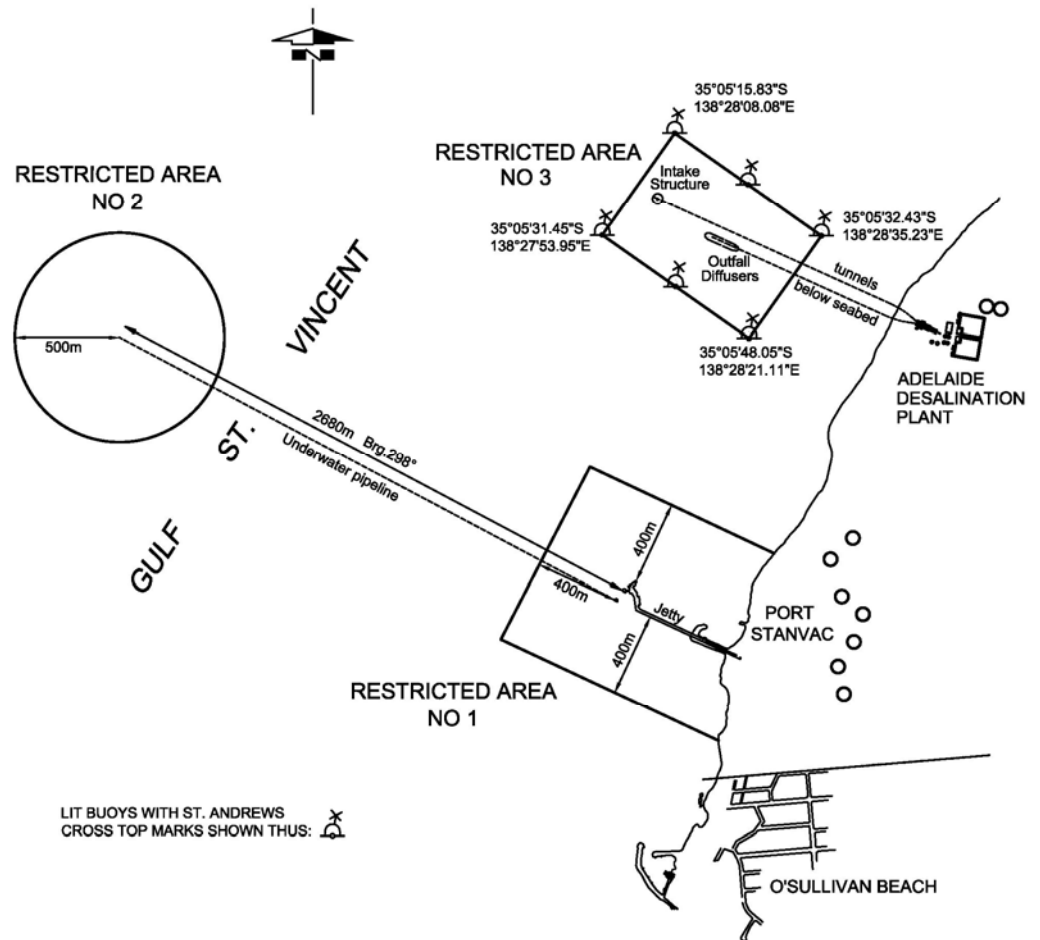
### **4—Variation of Schedule 5—Restricted areas**

- (1) Schedule 5, Part 1, clause 1, entries relating to Port Stanvac—after the description of Area 2 insert:

**Area 3:** the portion of the waters of western Gulf St. Vincent at Port Stanvac marked by six lit buoys with St. Andrews Cross top marks and within the area bounded—

- on the north-east by a straight line commencing at a point marked by a lit buoy at latitude 35°05'15.83" south, longitude 138°28'08.08" east and extending south-east to a point marked by a lit buoy at latitude 35°05'32.43" south, longitude 138°28'35.23" east; and
- on the south-east by a straight line commencing at a point marked by a lit buoy at latitude 35°05'32.43" south, longitude 138°28'35.23" east and extending south-west to a point marked by a lit buoy at latitude 35°05'48.05" south, longitude 138°28'21.11" east; and
- on the south-west by a straight line commencing at a point marked by a lit buoy at latitude 35°05'48.05" south, longitude 138°28'21.11" east and extending north-west to a point marked by a lit buoy at latitude 35°05'31.45" south, longitude 138°27'53.95" east; and
- on the north-west by a straight line commencing at a point marked by a lit buoy at latitude 35°05'31.45" south, longitude 138°27'53.95" east and extending north-east to a point marked by a lit buoy at latitude 35°05'15.83" south, longitude 138°28'08.08" east.

- (2) Schedule 5, Part 1, clause 1, entries relating to Port Stanvac—delete the map and substitute:



- (3) Schedule 5, Part 3, clause 3, entries relating to Port Stanvac—after the entries relating to Port Stanvac Areas 1 and 2 insert:

Port Stanvac Area 3    Controls 1, 4 and 6

- (4) Schedule 5, Part 3, clause 6—delete "relevant area" wherever occurring and substitute in each case:

specified waters

- (5) Schedule 5, Part 3, clause 6—after its present contents as varied by this regulation (now to be designated as subclause (1)) insert:

- (2) The controls set out in the table in clause 3 in relation to Port Stanvac Area 3 do not apply in relation to—

- (a) a person who is an employee, agent or contractor of AdelaideAqua Pty Limited or the Environment Protection Authority and is carrying out duties or working in that capacity in the specified waters; or

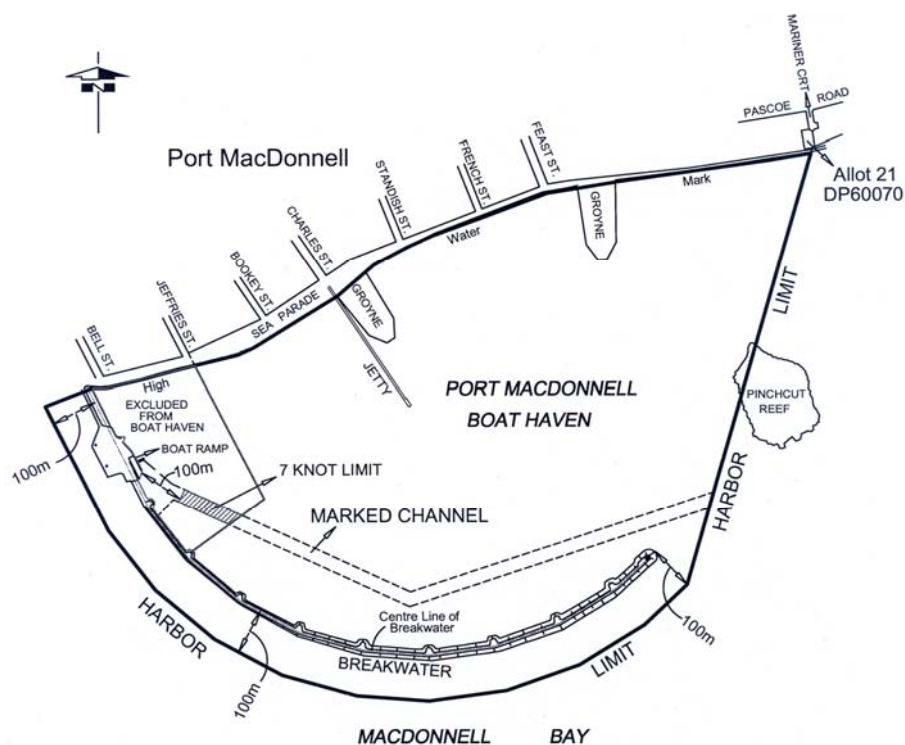
- (b) a vessel being used by a person referred to in paragraph (a) in the specified waters.

## 5—Variation of Schedule 10—Speed restrictions in certain waters

- (1) Schedule 10, clause 1—after paragraph (e) insert:

(ea) **Port MacDonnell**

The waters of Port MacDonnell in that part of the marked channel that is outside the Port MacDonnell Boat Haven and more than 100 metres from the boat ramp.



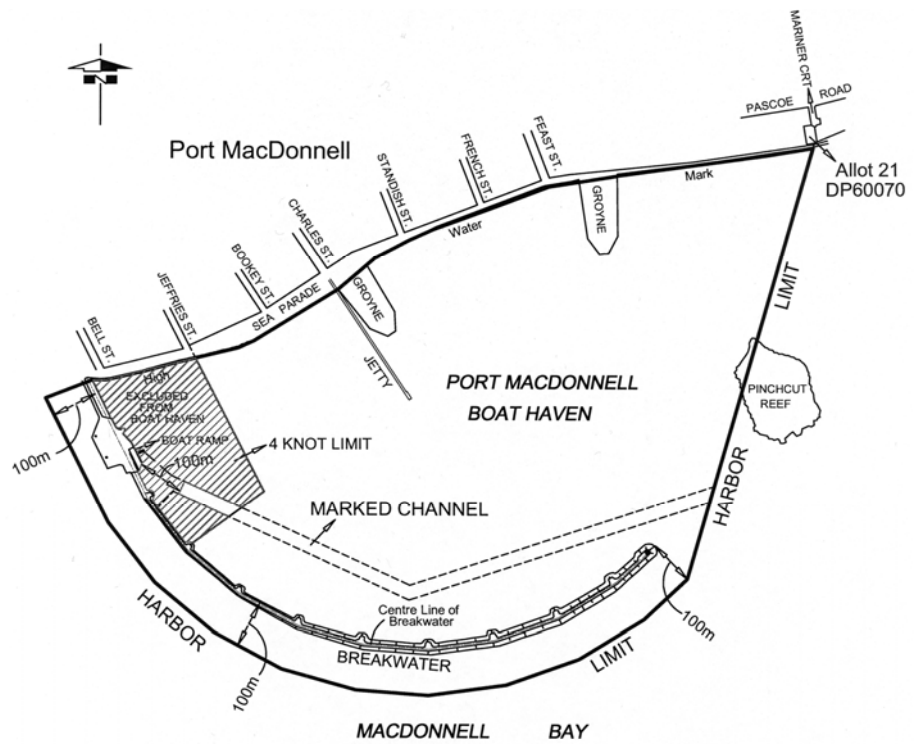
- (2) Schedule 10, clause 2—after paragraph (f) insert:

(fa) **Port MacDonnell**

The waters of Port MacDonnell bounded as follows:

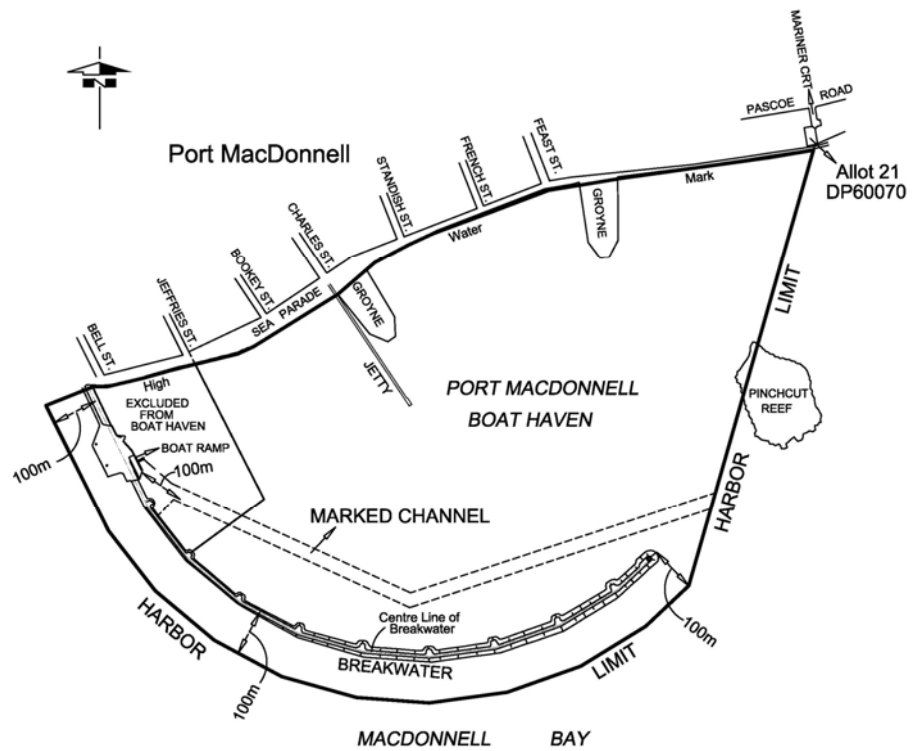
- on the south-east by a line joining the centre of the second turning bay on the breakwater to the seaward end of the jetty;
- on the south-west by the centre line of the breakwater;
- on the north by high water mark;
- on the north-east by the promulgation seaward of the north eastern boundary of Jefferies Street,

but not including the waters in that part of the marked channel that is outside the Port MacDonnell Boat Haven and more than 100 metres from the boat ramp.



### 6—Variation of Schedule 12—Boat havens

Schedule 12, map relating to the Port MacDonnell Boat Haven—delete the map and substitute:



**Note—**

As required by section 10AA(2) of the *Subordinate Legislation Act 1978*, the Minister has certified that, in the Minister's opinion, it is necessary or appropriate that these regulations come into operation as set out in these regulations.

**Made by the Governor**

with the advice and consent of the Executive Council  
on 14 July 2011

No 180 of 2011

MTR/11/006